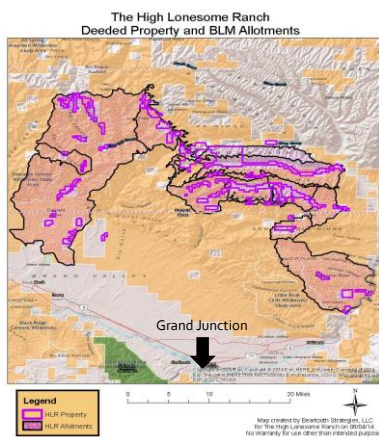


## Opportunities and Challenges to Energy Development on a Ranch in Western Colorado – Developing a Model for Conservation and Mixed-Use

8<sup>th</sup> International Wildlife Ranching Symposium  
Congress for Wildlife and Livelihoods on Private and Communal Lands  
Scott Stewart



Approximately 400 Square Miles near DeBeque, CO  
38,000 Acres Deeded, 205,000 Acres Permitted (BLM)  
Dude Ranch, Big Game, Wing-shooting, Fly-Fishing, Cattle  
High Lonesome Institute – research/education  
Responsible Energy Development



## HLR/TRCP "Agreement"



### "Demonstration Project" for Responsible Energy Development at the Landscape Scale

- Implement TRCP FACTS recommendations
- Provide example of how to develop energy in better balance with other uses and values
- Provide place and space for collaboration and discussions about balanced energy development
- Provide leadership for changes in national energy policy and stewardship of landscapes



### Working with Federal Agencies in Energy, Resources, and Land Use Planning

#### Bureau of Land Management (BLM)

- Federal Mineral Leasing/Development of existing leases
- Resource Management Plan (RMP) revision – draft fall 2012
- Implementation of Administration policy/priorities
- Sage Grouse/Habitat Management Coordination/Collaboration
- Grazing, Mining, Special Recreation

#### US Fish and Wildlife Service (FWS)

- Endangered Species Act (ESA) – CO River Fishes, Plants
- Sage Grouse – Candidate Conservation Agreement with Assurances (CCAA)
- Migratory Birds
- Energy – Landscape Conservation Cooperatives, Landscape Energy Action Plans

Natural Resources Conservation Service (NRCS) – Farm Bill, Working Lands for Wildlife



### Working with State Agencies in Energy, Resources, and Land Use Planning

#### CO Division of Fish, Wildlife, & Parks (CPW)

- Wildlife/Fisheries management, permitting, research (mule deer, elk, game birds)
- HR 1298 Geographical Area Plan for Energy Development (GAP), Voluntary Mitigation Agreements (VMA)
- Implementation of Administration policy/priorities
- Sage Grouse/Habitat Management
- Stakeholder/Coalition development

#### CO Oil and Gas Conservation Commission (COOGCC)

- All energy permitting on private, state, and federal land
- Spacing, violations, complaints, water use
- HR 1298 GAP/VMA

CO Governor's Office



### Working with Local Gov't, Industry, NGOs, and Other Stakeholders

County Commissions – Garfield, Mesa

Local Sage Grouse Working Group – Parachute, Roan, Piceance (PRR LWG)

Energy Industry – EnCana, Black Hills, Chevron, Shell

NGOs – Mule Deer Foundation (MDF), North American Grouse Partnership (NAGP), The Wildlife Society (TWS), Bull Moose Sportsmen Alliance (BMSA), Audubon, Colorado Wildlife Federation

Landowners

Trade Associations – Chamber of Commerce, Club 21, Western Energy Alliance (WEA)



### "Proof of Concept" for Responsible Energy Development and Provide Place for Collaboration

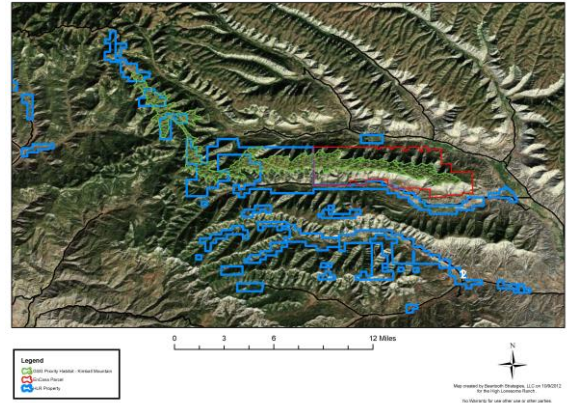
- An actual landscape that hasn't been developed intensively – yet
- Identify "special places" and areas that can be developed with minimal conflict
- Use science and current knowledge to drive practices
- Develop strategy for the conservation of fish, wildlife, and water during energy development
- Develop a local/regional stakeholder group to address concerns and conflicts
- Use conservation tools available through ESA, Farm Bill, HR 1298 and others to provide "certainty" to energy development and landscape/ranch stewardship
- Provide a place for divergent and often conflicting groups to meet and work out differences
- Show how energy can be done differently – landscape approach



## Key Accomplishments

- Proactive Sage-Grouse Conservation – Candidate Conservation Agreement with Assurances with FWS
- Proactive Mule Deer Conservation – Mitigation project with CPW and Black Hills to restore mule deer winter ranges and populations before impacts
- Community Conservation – Roan Creek Landscape Initiative
- Changing Public Policy through Action

Greater Sage Grouse Priority Habitat: HLR Core



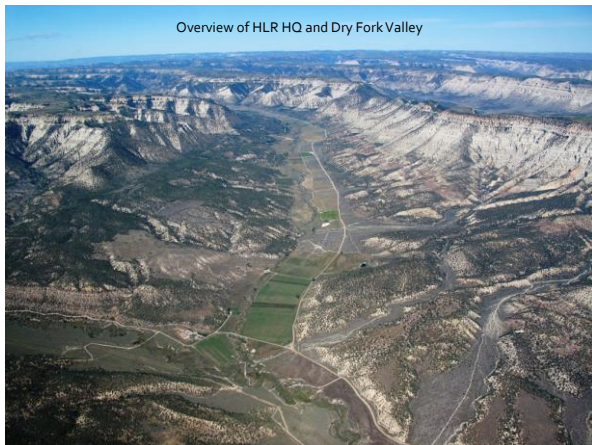
Ridge-top Development – Piceance Basin



Ridge-top Development – Roan Plateau







Directionally drilling from valleys can preserve intactness of landscape and reduce impacts



Questions??

[ssewart@thehighlonesomeranch.com](mailto:ssewart@thehighlonesomeranch.com)

970-283-9420