



Alisondra Stephenson

Spring 2022

Capstone - Painting

Department of Art and Art History

Artist Statement:

My work is primarily about the residue of human touch that builds up in ourselves and in the objects and spaces around us. I create airy, low-contrast oil paintings that use specific lighting and color variation within white tones to create empty interior spaces with an atmosphere that feels reverent and melancholy. My interest in memory and association started with painting figures directly, describing intimacy and connection in tiny moments or gestures, but as I continued to explore these ideas, my interest shifted to the echoes of those experiences, the fingerprints of attachment, brought on by instances of loss and isolation in my own life over the past two years. My more recent paintings have become more concerned with developing a visual language to talk about absence, loss, and the things that are left behind. Through experimentation, and with the restrictions of a limited color palette and value range, I'm trying to suggest memory and transience. As I continue working with these motifs, I'm looking for objects and spaces that feel weighed down by memory, to the point of almost becoming figures in their own right, with their own agency and gravity in the world.

Title	Original Format
Figure 1: Umbrella	Oil on canvas, 32 in x 43 in
Figure 2: February	Oil on canvas, 20 in x 36 in
Figure 3: Guidelines	Oil on canvas, 16 in x 20 in
Figure 4: The Old Wing	Oil on canvas, 42 in x 66 in
Figure 5: In the Hallway	Oil on canvas, 24 in x 36 in
Figure 6: Porcelain (Installation 2)	Acrylic on canvas, found objects, wire, 42 in x 66 in x 42 in
Figure 7: Incandescent	Oil on canvas, 9.5 in x 12.5 in
Figure 8: Ribcage (Int.)	Oil on canvas, 24 in x 20 in
Figure 9: Elise	Oil on canvas, 25.5 in x 15 in
Figure 10: Exit Wound	Oil on canvas, 9.5 in x 12.5 in
Figure 11: Peripheral	Oil on canvas, 9.5 in x 12.5 in
Figure 12: Mediator	Oil on canvas, 11 in x 14 in
Figure 13: Garment	Oil on canvas, 8 in x 16 in
Figure 14: Limited Capacity	Oil on canvas, 11 in x 14 in
Figure 15: Guidelines 2	Oil on canvas, 8 in x 10 in



Figure 1: Umbrella



Figure 2: February



Figure 3: Guidelines



Figure 4: The Old Wing



Figure 5: In the Hallway



Figure 6: The Old Wing (Installation 2)



Figure 7: Incandescent



Figure 8: Ribcage (Int.)



Figure 9: Elise



Figure 10: Exit Wound



Figure 11: Peripheral



Figure 12: Mediator

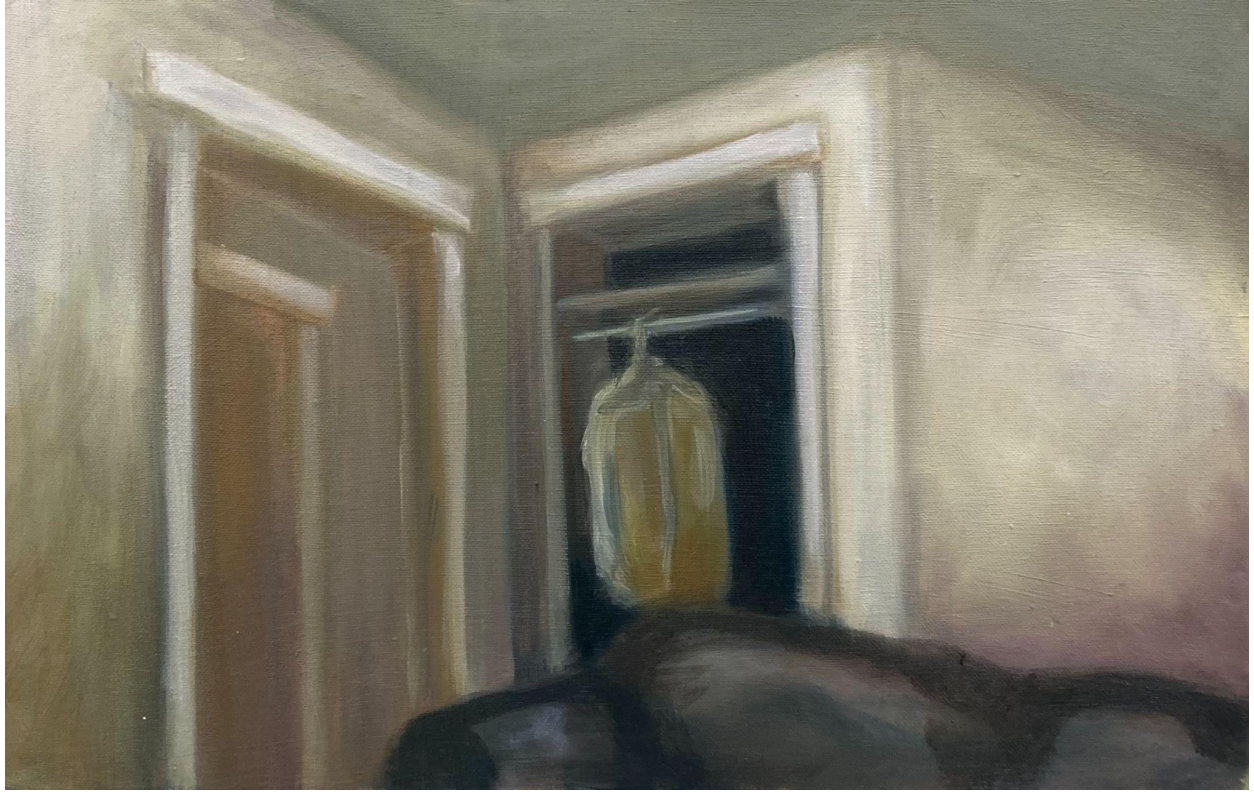


Figure 13: Garment



Figure 14: Limited Capacity

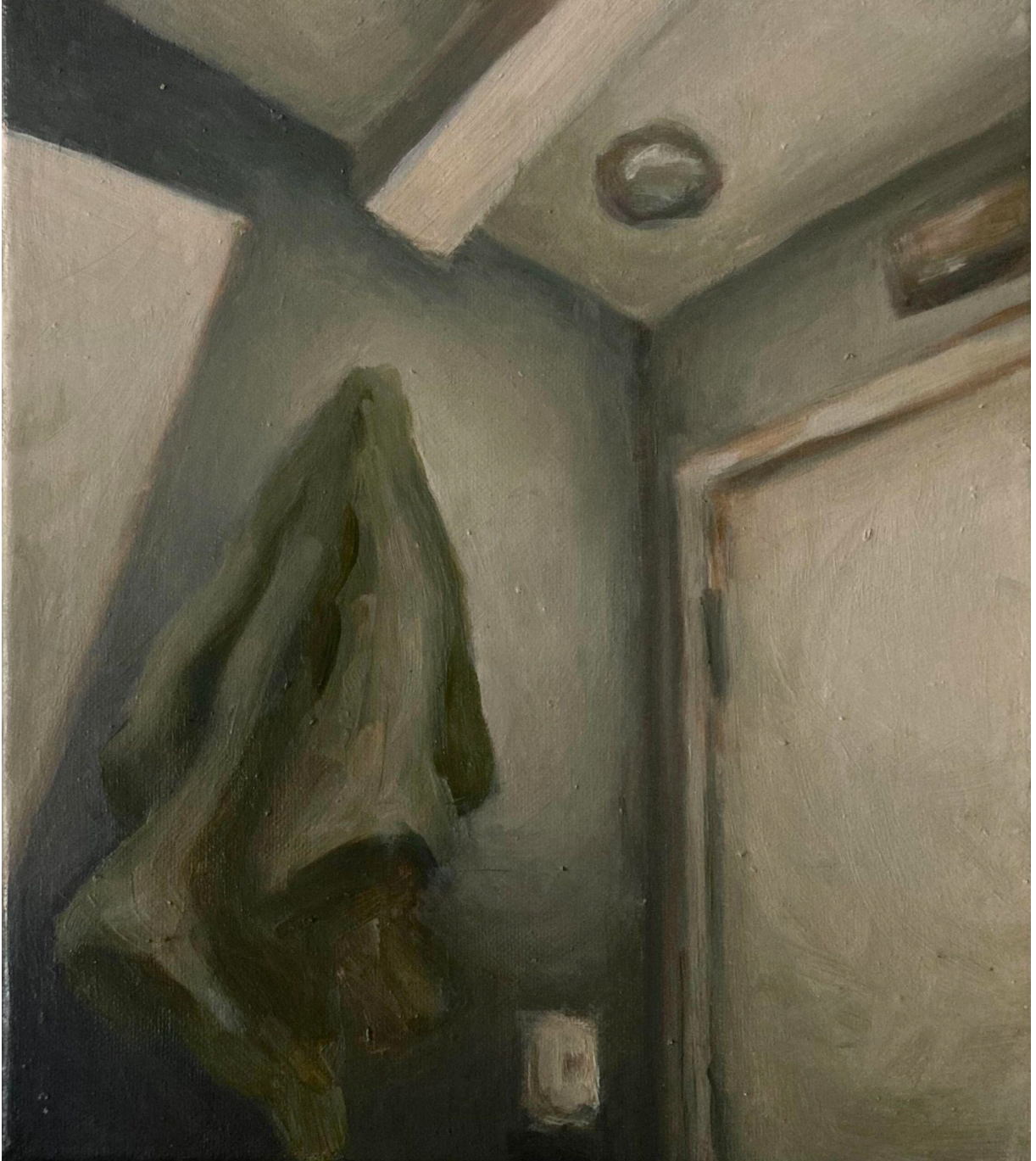


Figure 15: Guidelines 2