

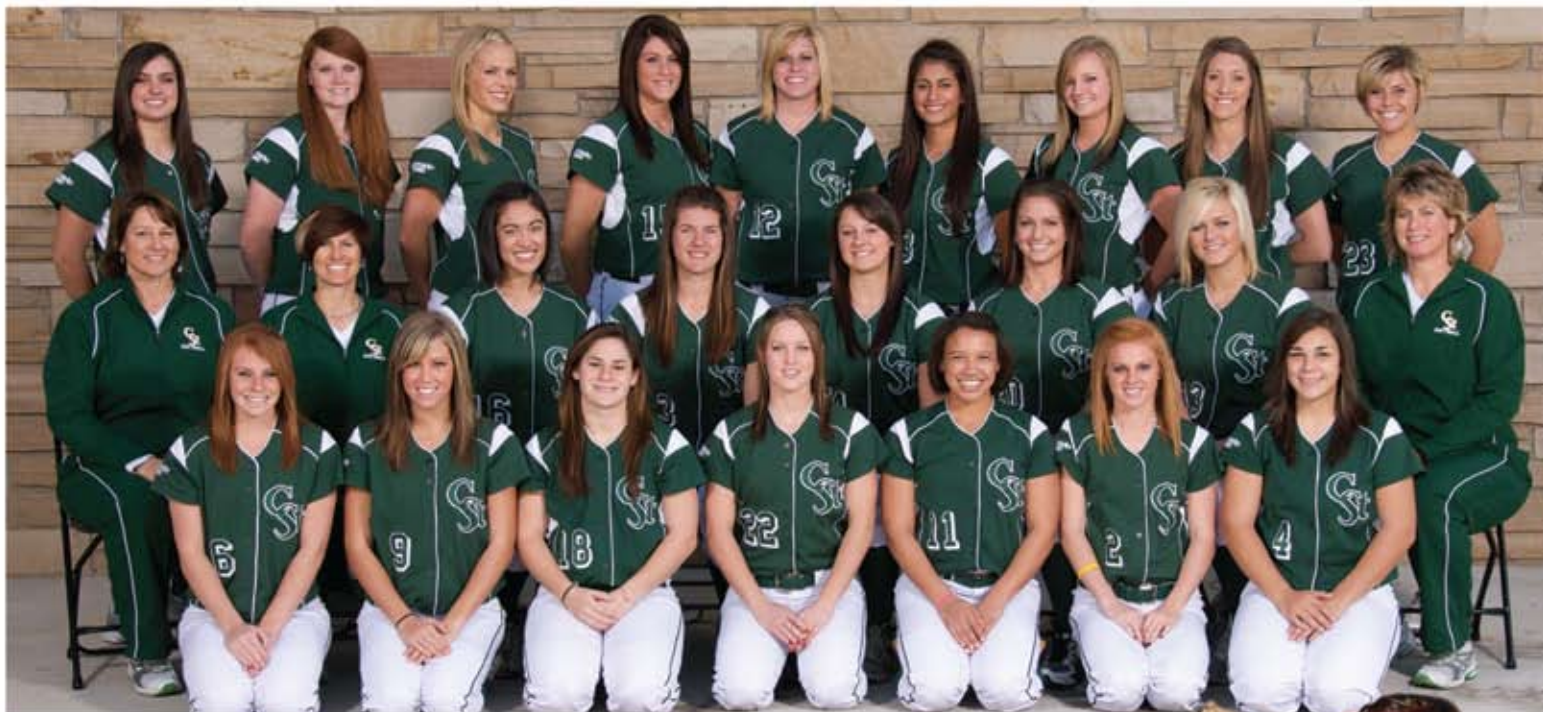
# DEFEND THE FORT



**RAMS SOFTBALL**  
2010 MEDIA GUIDE

**Colorado**  
**State**  
University





2010 Colorado State Rams Softball

| No. | Name              | Position | Class (Exp) | Hometown (Last School)                   |
|-----|-------------------|----------|-------------|--|
| 2   | Jenna Krogh       | OF       | SO (1L)     | Portland, Ore. (Westview HS)             |
| 3   | Robyn Mask        | IF       | SR (3L)     | Vancouver, Wash. (Prairie HS)            |
| 4   | Hayley Bolyard    | C        | FR (HS)     | Lafayette, Colo. (Peak to Peak HS)       |
| 5   | Kelsey Jo O'Brien | P        | FR (HS)     | Littleton, Colo. (Columbine HS)          |
| 6   | Ashley MacQueen   | IF       | SO (1L)     | Windsor, Colo. (Esparanza HS)            |
| 7   | Chelsea Freiberg  | IF       | SO (VR)     | Lakewood, Colo. (Green Mountain HS)      |
| 8   | Kayla Kreutzman   | OF       | SR (3L)     | Louisville, Colo. (Fairview HS)          |
| 9   | Brianna Donahue   | OF       | FR (HS)     | Westminster, Colo. (Ralston Valley HS)   |
| 10  | Kelli Groy        | IF       | FR (HS)     | Lakewood, Colo. (Green Mountain HS)      |
| 11  | Ivory Allen       | OF       | JR (2L)     | Denver, Colo. (Thomas Jefferson HS)      |
| 12  | Dani Chaplin      | P        | SO (1L)     | Brighton, Colo. (Brighton HS)            |
| 13  | Christine Thomsen | IF       | SO (1L)     | Fresno, Calif. (Bullard HS)              |
| 14  | Rebecca Penland   | P/OF     | SR (3L)     | Riverside, Calif. (Riverside Poly HS)    |
| 15  | Kelli Eubanks     | P        | SO (1L)     | Troutdale, Ore. (Reynolds HS)            |
| 16  | Allison Majam     | 3B/OF    | SR (3L)     | Pine Valley, Calif. (Mountain Empire HS) |
| 17  | Amilia Stephens   | C        | SO (1L)     | Arvada, Colo. (Faith Christian HS)       |
| 18  | Brittany Palish   | C        | FR (HS)     | Woodcliff Lake, N.J. (Pascack Hills HS)  |
| 20  | Sarah Sullivan    | OF       | SR (3L)     | Sterling, Colo. (Sterling HS)            |
| 22  | Lyssa Roberts     | IF       | SO (1L)     | Parker, Colo. (Douglas County HS)        |
| 23  | Caitlan Stem      | IF       | JR (2L)     | Broomfield, Colo. (Broomfield HS)        |
| 33  | Ashley Munoz      | C        | SR (3L)     | Diamond Bar, Calif. (Diamond Ranch HS)   |





## Table of Contents | Quick Facts



## Table of Contents

|                               |   |
|-------------------------------|---|
| <b>This is Colorado State</b> |   |
| 2.....                        | Message from Dr. Anthony A. Frank                             |
| 3.....                        | CSU System/Board of Governors                                 |
| 4.....                        | The University at a Glance                                    |
| 5.....                        | World-Class Academics   |
| 6.....                        | This is Fort Collins & Colorado                               |
| 7.....                        | Denver, The Mile High City                                    |
| 8.....                        | State-of-the-Art Facilities                                   |
| 9.....                        | State-of-the-Art Facilities                                   |
| 10.....                       | Softball Facilities   |
| 11-12.....                    | Director of Athletics Paul Kowalczyk                          |
| <b>Staff</b>                  |   |
| 13.....                       | Head Coach Mary Yori  |
| 14.....                       | Assistant Coaches Tonja Hadley/Dedeann Pendleton              |
| 15.....                       | Volunteer Assistant Coach Martha Davis/Softball Support Staff |
| 16.....                       | Colorado State Head Coaches                                   |
| <b>2010 Outlook</b>           |   |
| 17.....                       | 2010 Preview  |
| <b>Student-Athletes</b>       |   |
| 18.....                       | Kayla Kreutzman   |
| 19.....                       | Allison Majam   |
| 20.....                       | Robyn Mask  |
| 21.....                       | Ashley Munoz  |
| 22.....                       | Rebecca Penland   |
| 23.....                       | Sarah Sullivan  |
| 24.....                       | Ivory Allen/Caitlan Stem                                      |
| 25.....                       | Danielle Chaplin/Kelli Eubanks                                |
| 26.....                       | Chelsea Freiberg/Jenna Krogh                                  |
| 27.....                       | Ashley MacQueen/Lyssa Roberts                                 |
| 28.....                       | Amilia Stephens/Christine Thomsen                             |
| 29.....                       | Hayley Bolyard/Brianna Donahue/Kelli Groy                     |
| 30.....                       | Kelsey Jo O'Brien/Brittany Palish/Roster Breakdown            |
| <b>2009 Review</b>            |   |
| 31.....                       | 2009 Results  |
| 32.....                       | 2009 Statistics   |
| <b>Record Book</b>            |   |
| 33.....                       | All-Time Series Results                                       |
| 34.....                       | Career Records  |
| 35.....                       | Single Season Records   |
| 36.....                       | Team Records  |
| 37.....                       | Award Winners   |
| 38.....                       | All-Americans   |



On the cover (From left): Seniors Allison Majam, Kayla Kreutzman, Robyn Mask, Ashley Munoz, Sarah Sullivan, Rebecca Penland

**Credits:** The 2010 CSU softball media guide was published by the Colorado State Department of Athletics. The guide is a product of the Colorado State media relations office. Prepress formatting, desktop layout, design, writing and research by media relations student-assistant Tawny Dennis and assistant director of media relations Danny Mattie. Editorial contributions by director of media relations Zak Gilbert. Cover design by Danny Mattie. Photo credits to Paul Dorweiler, Dan Byers, Thomas Waudo and University Photo Services (including John Eisele, Bill Cotton and Joe Mendoza). The guide was printed by Pioneer Printing, Inc., of Cheyenne, Wyo.

## Quick Facts

## General Information:

School:..... Colorado State University  
 Location:..... Fort Collins, Colo.  
 Enrollment:..... 25,413  
 Nickname:..... Rams  
 Colors:..... Green and Gold  
 Conference:..... Mountain West Conference  
 President:..... Dr. Anthony A. Frank  
 Athletic Director:..... Paul Kowalczyk  
 Senior Woman Administrator:..... Christine Susemihl  
 Faculty Representative..... Jackie Hartman  
 Athletic Dept. Phone:..... 970/491-3350

## Team Information:

Head Coach:..... Mary Yori (Creighton, '82)  
 Record at Colorado State:..... 247-222 (9 seasons)  
 Career Record:..... 706-380 (20 seasons)  
 Assistant Coaches:..... Tonja Hadley  
 ..... (Cal State-Hayward, '92)  
 ..... Dedeann Pendleton (Creighton, '95)  
 Softball Office Phone:..... 970/491-6000/6227  
 2009 Record:..... 26-25  
 2009 Conference Record (Finish):..... 7-8 (T-3rd)  
 2009 Postseason Play:..... N/A  
 2009 Letterwinners Returning/Lost:..... 15/3  
 2009 Starters Returning/Lost:..... 7/1  
 2009 Pitchers Returning/Lost:..... 3/1  
 Home Field (Capacity):..... Ram Field (500)  
 Last Postseason Appearance: 2003 NCAA Regional Tournament

## Media Information:

Softball Contacts:..... Tawny Dennis/Danny Mattie  
 Cell Phone:..... 303/921-9409/970/217-3140  
 Office Phone:..... 970/491-5050  
 SID Email:..... tawntawn@rams.colostate.edu  
 ..... d.mattie@colostate.edu  
 Sports Information Director:..... Zak Gilbert  
 Email:..... zak.gilbert@ColoState.edu  
 Office Phone:..... 970/491-4672  
 SID Fax:..... 970/491-1348  
 Website:..... www.CSURAMS.com

## A Message From University President Dr. Anthony A. Frank



### Welcome to Colorado State University!

**A**s one of America's leading research universities, Colorado State fosters a culture of academic excellence—and we strive for the same champion-caliber success in our athletic programs. We are committed to a strong, competitive athletics program that provides our student-athletes a stage on which to shine and rewards our fans for their loyalty and confidence in CSU.

This commitment to quality in both athletics and academics is evident in our recent investments in people and new facilities. Athletic Director Paul Kowalczyk has set a high standard that's reflected in the leadership of our coaches, who run successful, above-board programs that focus not just on winning, but on the long-term personal and professional success of our student-athletes. Our outstanding Ram athletes represent our University in the community, and we place a premium on recruiting students whose talent and dedication are matched by integrity, character, and a commitment to excel.

Last fall—thanks to the leadership of Ram fans and the Board of Governors of the CSU System—Colorado State completed two new, state-of-the-art facilities dedicated to the development of both the mind and body. The new Academic and Training Center supports the recruitment, education, and graduation of our student athletes, with expanded weight rooms, improved study environments, academic support services, and a new computer lab. In August, we were proud to inaugurate our new indoor training facility. With a 70-yard synthetic turf field, four-lane track, basketball and volleyball courts, and hitting areas for softball and golf, this facility allows our student-athletes to take additional training steps even during periods of cold Colorado weather.

Support from donors and Ram fans has helped make these upgrades possible—and demonstrates the commitment to excellence that makes a great University sports program possible. Thanks to all of you for supporting our teams, and let's have a great season.

Go Rams!

A handwritten signature in black ink that reads "Anthony A. Frank". The signature is fluid and cursive.

Dr. Anthony A. Frank  
President





## Colorado State University System



## Board of Governors



**Joe Blake**  
Chancellor  
Colorado State  
University System



**Patrick McConathy**  
Chairman of the Board  
CEO, Yarmony Energy



**Bonifacio A. Cosyleon**  
Secretary  
President, Byerly and  
Cosyleon, Inc.



**Tom Farley**  
Voting Member  
Regent, Santa Clara University



**Patrick Grant**  
Voting Member  
President & CEO,  
National Western Stock  
Show Association



**Ed Haselden**  
Vice Chairman  
President & CEO,  
Haselden Construction



**John Ikard**  
Voting Member  
President & CEO,  
FirstBank Holding Company



**Douglas L. Jones**  
Voting Member  
President & Owner,  
The Jones Realty Group



**Marguerite Salazar**  
Treasurer  
President & CEO,  
Valley-Wide Health  
Systems, Inc.



**Joseph C. Zimlich**  
Voting Member  
CEO, Bohemian Companies

The Board of Governors of the Colorado State University System represents the people of Colorado, assuring effective management, accountability, and responsible leadership of all the CSU System campuses – Fort Collins, Pueblo and the new online Global Campus.

Board members come from across the state and from many fields — business, public service, agriculture — and share a strong commitment to excellence, innovation, and student success.

The Board of Governors sets a standard of excellence for all the campuses that carry the Colorado State

name, through the establishment of a bold vision, mission, and values coupled with ambitious stretch goals for each campus, and strongly supports Colorado State athletics programs as a source of pride for students, alumni, and the State of Colorado.

The Board of Governors and the CSU System work to further the roles of its three universities to be integral contributors to the economic development of the state. Work force education, research funding and new business and product development are some of the areas where the institutions are excelling.





## The University at a Glance



Colorado State University is transforming lives, solving problems, supporting economic vitality, and targeting our world's greatest challenges. Committed to the land-grant heritage of education, research, and outreach, Colorado State sets the standard as a 21st-century research university characterized by a global reach, scholarly excellence, and an immediate impact on the world. And as a land-grant university, we're particularly committed to creating access and opportunity for people in Colorado and around the world who can benefit from our special brand of hands-on, engaged learning.

As a Carnegie Community Engagement University, Colorado State University leads the world in disciplines such as human and animal health, clean energy and the environment, global and sustainable business, engineering, and climate research.

Challenging academic programs and world-changing research are hallmarks of Colorado State, and it is our special commitment to service, outreach, and transforming our world through innovation that sets this university apart from other institutions. That commitment is reflected in our classrooms, in the work of our faculty around the world, and in our groundbreaking commitment to move research breakthroughs rapidly from the laboratory to the marketplace. Even more important, it is reflected in

the quality of our students and graduates, who embody the university's mission and go on from CSU to make a significant impact on our world.

With more than 150 programs of study and 78 undergraduate degree programs offered in eight colleges and the graduate school, and a faculty-to-student ratio of 17:1, students have access to a wealth of educational possibilities at Colorado State. Along with outstanding programs in the liberal and performing arts, humanities and social sciences, Colorado State offers some of the top professional programs in the country in construction management, occupational therapy, psychology, communications and agriculture.

Colorado State is also making investments in new facilities — \$27 million has been committed for building a new indoor practice facility and a new academic and training center dedicated to student-athletes. New residence halls, a parking garage, and both new and renovated academic buildings are just a few of the projects under construction across campus.

We invite you to learn more about Colorado State, a university with vision, character, and a commitment to excellence.







**C**olorado State University takes very seriously its role in educating student-athletes. Excellence is expected on the field and in the classroom.

The most recent NCAA academic statistics reveal that Colorado State leads the Mountain West Conference in graduation rate for student-athletes at 66 percent – well ahead of the conference's overall student-athlete graduation rate of 57 percent. In football, Colorado State is second in the MWC, graduating 68 percent of its student-athletes – again, well ahead of the conference average of 49 percent.

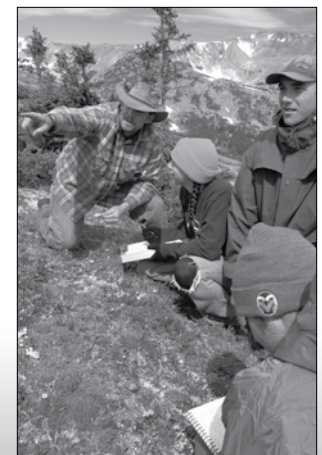
Colorado State, however, is not resting on its reputation for graduating its student-athletes. The state-of-the-art Anderson Academic Center, which will greatly enhance

the academic facilities available for student-athletes, opens in August 2009.

While the athletic department takes its role in the educational process very seriously, Colorado State's mission to provide a world-class education is at the core of academic success. U.S. News and World Report ranked Colorado State in its top tier in its annual "America's Best Colleges" report. The university offers 79 majors and 27 minors, and many of its programs are ranked among the best in the country.

Colorado State continues to push forward in its mission to provide the best possible education. Construction recently was completed on the state-of-the-art University Center for the Arts and Computer Science buildings, and the Indoor Practice Facility, Academic and Training Center, and the College of Business' Rockwell Hall expansion soon will be completed.

- CSU's Veterinary Medicine program ranks second in the country and is the national leader in federal research dollars.
- *BusinessWeek* ranked CSU's undergraduate College of Business program 67th (up from 73rd in 2008). The program ranks 30th among all public schools and 14th among all colleges and universities in the West and Southwest. The marketing and business law programs were ranked in the nation's Top 10 by the magazine.
- In December 2008, CSU conferred its 150,000th bachelor's degree and 200,000th overall degree.
- According to NCAA statistics, CSU's graduation rate for student-athletes is higher than the graduation rate for the overall student body.





## This is Fort Collins & Colorado



Old Town Fort Collins, the inspiration for Disneyland's Mainstreet USA.

### Fort Collins Facts

- No. 1 place to live in the United States (*Money* magazine, August 2006).
- No. 1 Best Place to Live and Work for Young Professionals (pop. 100,000-200,000), Next Generation Consulting, March 2009.
- No. 2 in *Forbes* magazine's best United States cities for business and careers (March 2009); Denver ranked 14th and Boulder was 20th among five Colorado locations in the publication's top 40.

- One of the Top 20 Places to Thrive (Best Boomer Towns, February 2009).
- Ranked 10th-best educated city in America (*Forbes* magazine, November 2008).
- One of the Best Places to Raise Your Kids (*BusinessWeek*, November 2008).
- Gold level Bicycle Friendly Community (League of American Bicyclists, September 2008).



One of Colorado's most vibrant cities, Fort Collins is the best place in the country to live, work and play. Located on the northern Front Range of the majestic Rocky Mountains, the city is within an hour's drive of Denver, the nation's 25th-largest metro area.

This city of 137,200 residents basks in 300 days of sunshine per year — more than San Diego and Florida — and includes the historic Old Town district with its restaurants, shops, and entertainment, all within walking distance of Colorado State University's campus.

Since its founding as a military fort in 1864, Fort Collins has anchored northern Colorado's rich heritage of academic, business and recreational pursuits. Hiking, mountain biking, kayaking, river rafting and rock climbing are just a few popular outdoor pursuits for students and residents.

The city maintains more than 600 acres of parks, 5,000 acres of natural areas, 20 miles of off-street trails for hiking and biking, and three golf courses. The Lincoln Center and the University Center for the Arts, anchored in Fort Collins, are northern Colorado's cultural arts centers.





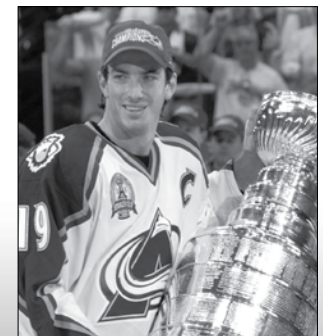
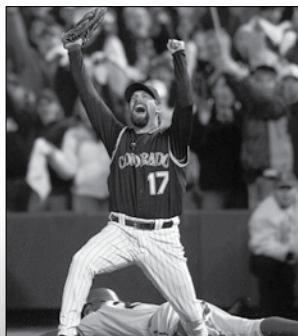
## The Mile High City



The Denver Metro Area, with a population of 2.4 million, is less than an hour's drive from Fort Collins. A major-league metropolis, named by the *Sporting News* the best sports city in the United States, Denver is home to three teams that have competed for their respective world championships in the past 11 years — the Super Bowl XXXII and XXXIII champion Denver Broncos, the 1996 and 2001 Stanley Cup champion Colorado Avalanche, and the 2007 National League champion Colorado Rockies, who lost the World Series that season to the Boston Red Sox. The Denver Nuggets, meanwhile, just finished their most successful season in 24 years, going all the way to the NBA's Western Conference Finals before bowing out to the eventual world champion Lakers.

Sports fans in Colorado are among the most passionate in the nation, and for good reason — their teams are winners.

Denver has all the features of any big city, including great shopping and nightlife on the 16th Street Mall (Denver Pavilions, below left), a one-of-a-kind concert venue in Red Rocks Amphitheatre (below, second from right), an adrenaline-inducing amusement park in Elitch Gardens, and the world's 10th-busiest airport, Denver International. Nicknamed the Mile High City because it is one mile above sea level, downtown Denver is home to the Colorado state capitol building, the 13th step of which is exactly one mile in elevation.





## New Academic & Training Center



**Cost:** \$7 million  
**Size:** 16,000 square feet,  
**Location:** Southeast of the McGraw Athletic Center

**Features:**

- Training portion includes a state-of-the-art weight room, strength and conditioning offices, a nutrition center and restrooms.
- Academic center features five private tutorial rooms and large study areas
- Includes a computer lab with 30 workstations, more workspace and offices for CSU's academic staff.

In 1998, Colorado State enhanced its weight room and built an academic center as part of the McGraw Athletic Center project, but these facilities no longer meet the needs of its expanded student-athlete base, nor do they allow the Rams to compete for top-quality recruits.

Because of the heavy time constraints placed on CSU student-athletes through practice, travel, strength and conditioning, and community service, a quality learning environment is essential for the university's student-athletes to achieve the high standards of academic success expected of them.

The Academic and Training Center will be a centerpiece for CSU's athletic program and support its mission to recruit, educate, develop, and graduate Rams student-athletes within an environment that prusues excellence, values integrity and ethical conduct, promotes respect for all individuals, teaches sportsmanship, entertains our constituents and emphasizes championship performance.





# New Indoor Practice Facility

Every CSU program will benefit from the Rams' new facilities. The Indoor Practice Facility will be used by all of the Rams' sports teams, whether they are in season or involved in offseason conditioning.



**Cost:** \$13 million  
**Size:** 66,267 square feet, including 48,125 dedicated to the football portion and 8,827 to the basketball and volleyball areas  
**Height:** 65 feet at its tallest point  
**Location:** East of Moby Pool and north of the Student Recreation Center

## Features:

- Gymnasium easily encloses a regulation basketball court and two half courts.
- Volleyball configuration can accommodate two full-length courts.
- Contains a 70-yard synthetic-turf football field (including one end zone).
- Features a four-lane, 70-meter track and a unique shoe-changing room adjacent to the football field.
- Has flexibility to allow the softball team to set up batting cages on the football field.
- Will provide shelter for any student-athlete in each of the Rams' 16 varsity sports.
- Includes training room, equipment storage, lobby and trophy display case, and restrooms.
- Uses an innovative air circulation system.





## Softball Facilities



Ram field was built in 1995 and upgraded in 2003 to provide CSU softball with one of the best playing facilities in the Mountain West Conference

Ram Field, Colorado State's softball facility, received a major upgrade in the fall of 2003. The facility includes two batting cages, two pitching areas and a large multi-purpose area. The upgrade was added just outside the Rams' third-based dugout.

Additionally, the program has benefitted from the installation of two indoor batting cages in the school's auxiliary gym adjacent to Moby Arena. The recent upgrades have played a vital role in the practice and preparations for the Rams.



Upgraded batting cages and bullpen area outside the Rams' dugout



## Director of Athletics Paul Kowalczyk

**PAUL KOWALCZYK****Director of Athletics | Fourth Season at CSU | Kent State, '80, '86**

Director of Athletics Paul Kowalczyk has placed Colorado State's program on an ambitious path toward national prominence with his insightful and visionary leadership.

Kowalczyk is in his fourth year leading CSU's program. From the moment he arrived on campus, he has shown a leadership style that is steady and consistent with ambitious goals clearly established. Under his watchful eye, a foundation has been built to cultivate long-term success throughout the program. With the foundation firmly in place, Colorado State's program stands on the threshold of taking a bold step forward nationally to reach "stretch goals" implemented by the Board of Governors when Kowalczyk arrived.

Perhaps nothing better illustrates the progress toward prominence that CSU's program has made during Kowalczyk's tenure than the changing skyline surrounding Moby Arena and the McGraw Athletic Center, both of which serve as centerpieces of the athletics department.

During the summer of 2009, CSU opened two state-of-the-art athletics facilities that are visually prominent to any avid Rams fan upon arriving on campus.

A training facility includes an indoor football practice field plus basketball and volleyball practice courts, adjacent to Moby Arena. Also, a new academic and strength and conditioning center is next to the McGraw Athletic Center.

The new facilities are among the finest in the nation, and will make CSU competitive nationally and enhance the institution's image across a broad spectrum.

The facilities represent one of Kowalczyk's primary goals when he was appointed to his position at CSU. Almost immediately upon his arrival, he worked closely with campus leaders to develop the facilities initiative.

"These buildings show that Colorado State is unmistakably serious about achieving its stretch goals," Kowalczyk said. "Combined with the recent renovations at our football stadium, this puts us where we need to be in terms of offering quality, state-of-the-art facilities for our coaches and student-athletes, those who are here now and those who are thinking about coming here."

The facilities also reflect Kowalczyk's commitment to excellence throughout the program.

"Average is simply not good enough," he said. "We must continually find ways to improve every aspect of our program while meeting the needs of our student-athletes and providing resources for our coaches -- not just to compete, but to win, and do it while serving the university, the community and the region."

Soon after Kowalczyk's arrival in Fort Collins, he worked closely with the Board of Governors of the Colorado State University System and the university leadership to set in place a set of "stretch goals."

**KOWALCZYK AT A GLANCE****Education**

- Bachelor of business administration, accounting; Kent State University, 1980
- Master of arts, sports administration, Kent State University; 1986

**Athletics Administration Experience**

- 2000-06: Southern Illinois University; Director of Athletics
- 1995-00: Northwestern University; Associate Athletics Director for External Affairs
- 1991-95: Northwestern University; Assistant Athletics Director/Business Manager-Finance and Personnel
- 1988-91: Kansas State University; Assistant Athletics Director for Business Operations
- 1987-88: Portland State University; Athletics Business Manager
- 1986-87: Youngstown State University; Assistant to the Athletics Director, Marketing
- 1985-86: Kent State University; Assistant to the Associate Athletics Director, Fundraising

**Personal**

- Born: Feb. 17, 1958
- Birthplace: Warren, Ohio
- Family: Married to Peg Lynch Kowalczyk
- Last name is pronounced kuh-WALL-check





## Director of Athletics Paul Kowalczyk

### Athletic Department Mission Statement

The purpose of the Colorado State University Department of Athletics is to recruit, educate, develop and graduate student-athletes within an environment that pursues excellence, values integrity and ethical conduct, promotes respect for all individuals, teaches sportsmanship, entertains our constituents and emphasizes championship performance.

"The support of the board and campus administration, who were there every step of the way, was critical," Kowalczyk said. "We have leadership on this campus that not only recognizes the importance of investing in athletics, but also what a successful athletics department can do for the university."

Colorado State's stretch goals include:

- Achieve a No. 1 ranking in the Director's Cup, a ranking system that reflects overall program success;
- Annual Bowl Championship Series inclusion;
- NCAA men's and women's basketball tournament participation.

While the entire program under Kowalczyk's guidance has moved forward with the completion of the facilities, he readily admits there are more challenges that lie ahead.

"We will never stand still. We will continue to move forward. As a program, we will strive for excellence in every area, just as we challenge our student-athletes in competition and in the classroom.

"Our efforts will always include continually and diligently working to expand our ticket and Ram Club donor base as a means to generate additional revenue and scholarship fund support." Colorado State's expected emergence nationally has provided followers of the program optimism and excitement.

Kowalczyk brought a wealth of experience and knowledge to Fort Collins when he was named the school's 16th Director of Athletics on April 11, 2006, after having served for six successful years in the same capacity at Southern Illinois University.

In the spring of 2008, he was named to the prestigious NCAA Division I Leadership Council, an advisory body to the Division I Board of Directors. The council identifies issues important to the future of Division I and offers its expertise in defining appropriate action items.

Kowalczyk also remains involved in NCAA, NACDA and MWC activities.

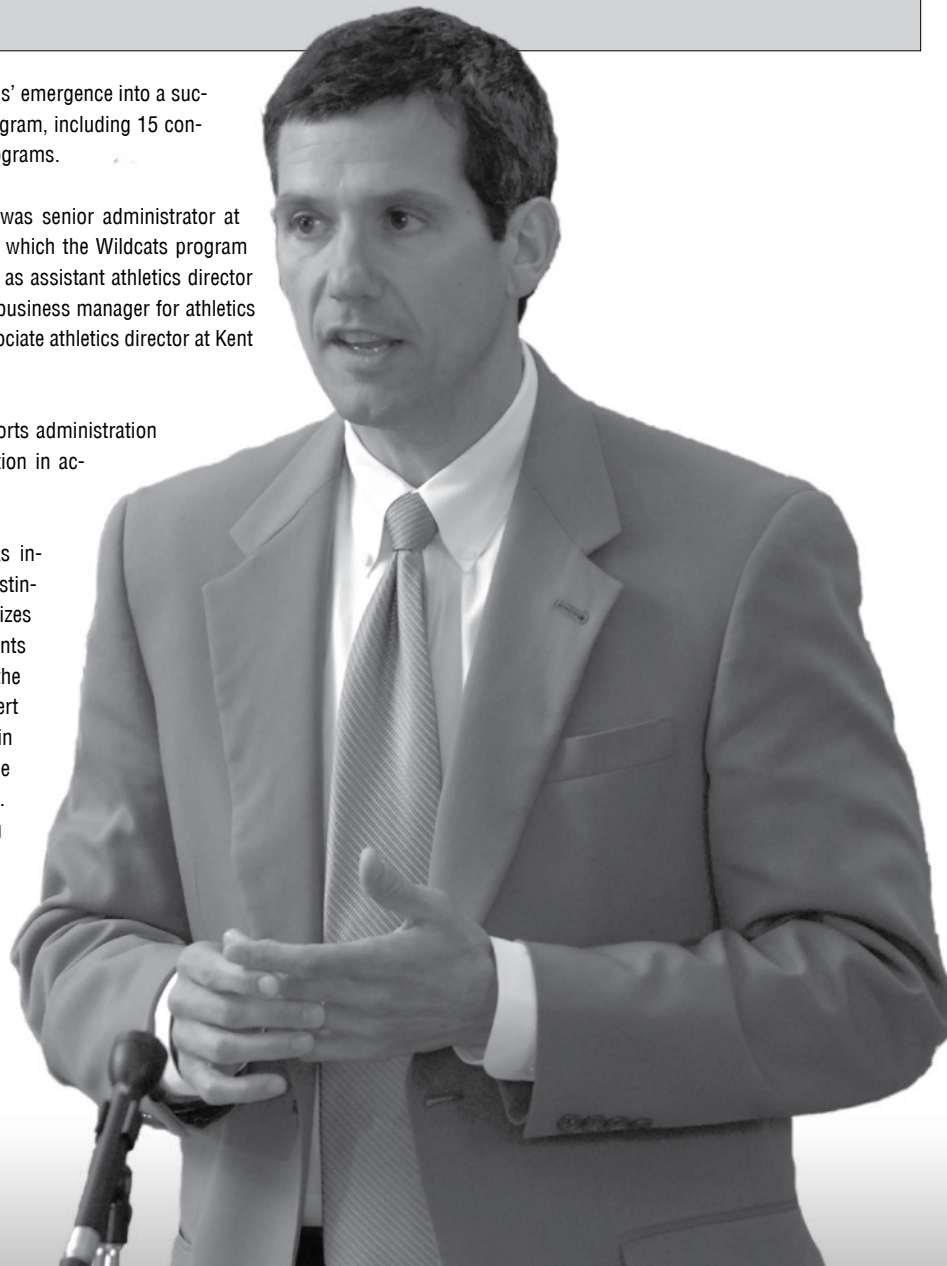
During his tenure at SIU, he led the Salukis' emergence into a successful, nationally renowned athletics program, including 15 conference championships in seven sport programs.

Before his tenures at CSU and SIU, he was senior administrator at Northwestern University during a time in which the Wildcats program enjoyed national success. He also served as assistant athletics director for business operations at Kansas State, business manager for athletics at Portland State, and assistant to the associate athletics director at Kent State.

Kowalczyk holds a master's degree in sports administration and a bachelor's of business administration in accounting from Kent State University.

A native of Warren Ohio, Kowalczyk was inducted into the Warren High School Distinguished Hall of Fame. The award recognizes and honors individuals for their achievements and performance. In 2004, he received the National Football Foundation's Gen. Robert R. Neyland Outstanding A.D. Award, and in 2006 was named the Athletic Director of the Year for the Division I-AA Central Division. Kowalczyk is also in the midst of serving a four-year term on the NACDA Executive Council, representing District 7.

He is married to Peg Lynch Kowalczyk.







## MARY YORI

CREIGHTON (1982)  
10<sup>TH</sup> SEASON AT CSU (247-222), 21<sup>ST</sup> SEASON OVERALL (706-380)

Colorado State University has attained national prominence and consistent winning seasons behind the guidance and leadership of Mary Yori, one of the game's most successful coaches.

During the 2009 campaign, Yori led the Rams to a 26-25 overall record, her third consecutive win-

ning season at Colorado State. She coached Colorado State to an impressive victory over No. 7 California on March 21, marking the second time in three seasons Yori and the Rams have defeated a ranked California squad. She also led the Rams to a 7-8 Mountain West Conference record, tying for third place.

Yori also celebrated another coaching milestone in 2009, garnering her 700th career victory on April 19 against New Mexico at Ram Field.

In 2008, Yori led the Rams to a 29-22 overall record while reaching three important milestones in her career. Yori won her 200th game at CSU against Texas-San Antonio on Feb. 18 and coached in her 400th game at the university on April 4 against BYU. Along with adding to her CSU resume, Yori coached in her 1,000th career game, against Utah State, on March 8 at Ram Field. Yori also led the Rams to a 3-2 win over No. 20 Oregon on Feb. 8 and a 9-3 victory over No. 12 Northwestern on March 21.

During that same season Yori led the Rams to national recognition with the team placing in the top 25 in several offensive categories at the end of the season, including home runs per game (fourth), doubles per game (eighth), slugging percentage (ninth) and scoring (12th).

Yori also led the Rams atop the Mountain West Conference in several categories. As a squad, the Rams knocked 68 homers with 12 different CSU players contributing. The

68 home runs ranked second in the conference, while no other team in the conference had more than 10 players with a home run. Colorado State senior Lauren Cusick led the team and the conference with 20 home runs on her way to earning Mountain West Conference Player of the Year. Cusick is the second player under Yori to garner that award, as Stephanie Roberts was named Player of the Year in 2003.

During the 2007 campaign, Yori led the Rams to a 30-28 overall record and a third place finish in the MWC. She coached the Rams to an impressive 2-0 victory over No. 11 Cal on Feb. 17.

In 2006, Yori led the Rams to an even 26-26 season after an impressive 30-22 record in 2005, the third-straight season of 30-plus wins, marking only the second time in the programs' history that the team has had 30 or more wins in back-to-back seasons.

In 2004, Yori and the Rams followed the success of the 2003 campaign with a 40-14 record, becoming only the second squad in school history to reach the 40-win plateau. Yori earned Mountain West Coach of the Year honors for the second straight season as the Rams won the first MWC regular-season title in school history. Coach Yori notched her name into the CSU record books once again, becoming only the second coach in Colorado State history to reach 200 wins. Her record at CSU now stands at 247-222 for her career with the Rams.

Heading into the 2003 season, Yori felt the program was on the verge of national success, but the Rams softball program arrived on the national stage sooner than anticipated. The team improved from 19-33 in 2002 to 37-15 in 2003, including a trip to the NCAA regional championship. This was just the second NCAA regional appearance for the Rams in program history; the first was in 1997.

With seasons like the Rams had in 2003 and 2004, it is understandable that Yori was voted back-to-back Mountain West Conference Coach of the Year.

Yori was named Colorado State's head softball coach in July of 2000, and immediately put in place a plan to build the school's softball program into one of the nation's fin-

est. Her goals are based on the success she achieved throughout her coaching and playing career.

"We have worked very hard as a staff, and as student-athletes to reach the level of becoming a national-caliber program," said Yori. "I believe that everyone associated with our program is dedicated to the same goal."

Yori came to the Rams after having served as the head coach at the University of Nebraska-Omaha from 1988-99. During that time, she guided the program to 10 consecutive NCAA regional tournament appearances. UNO won the North Central Conference championship in 1994, '95, '96, and '97.

Yori has the well-deserved reputation as one of the nation's premier collegiate softball coaches. When the 2010 season begins, she will hold an impressive career coaching record of 706-380, having won 65 percent of her games as the head coach.

At UNO, she won nearly 75 percent of the games she coached, the fifth-highest figure in NCAA Division II history. On Nov. 7, 2007, Yori was inducted into the UNO Hall of Fame for her coaching accomplishments. Prior to becoming the head coach at UNO, Yori was an assistant at Creighton University, her alma mater. She played for the Blue Jays, earning All-America honors twice and leading her team to the College World Series three consecutive years from 1980-82. Yori was inducted in the Creighton Hall of Fame in 1992.

Twice in her coaching career at UNO she was selected by the National Fastpitch Coaches Association as the NCAA Division II Coach of the Year, in '94 and again in '96.

Yori brought that coaching reputation with her to Fort Collins, and is building the Rams' program into one of the nation's finest.



## Assistant Coaches



### TONJA HADLEY

ASSISTANT COACH | SECOND SEASON AT CSU  
CAL STATE-HAYWARD (1992)

Tonja Hadley is now in her second season after rejoining the Rams in 2009 for a second stint in her coaching career,

and is responsible for the Rams' hitters and outfielders. Her administrative duties include acting as recruiting coordinator, and camps and clinics coordinator, as well as travel and marketing responsibilities.

Prior to her return to Fort Collins, Hadley spent three seasons at Fort Hays State, where she was the head coach from 2006-08. During her time at FHSU, Hadley steered the Tigers to the program's first winning season since 2003, a 32-26 finish in 2008, and conference tournament appearances in 2007 and 2008. Under Hadley's direction, the Tigers rewrote the record book, setting school marks for batting average, hits, home runs, total bases and slugging percentage. Three of her players earned all-region honors and the Tigers had 14 all-conference selections during Hadley's tenure.

Hadley joined Fort Hays State from Colorado State, where she served as an assistant coach for four seasons (2002-05) under Mary Yori. At CSU, Hadley helped the Rams to consecutive Mountain West Conference championships (2003 -04). The Rams earned an NCAA regional berth in 2003, while their 40 wins the following year marked their second most in school history.

Before coaching for the Rams, Hadley served as an assistant at Santa Clara (1997-99) and helped the Broncos rebound to win a conference championship in 1998, while setting a school record for wins. Prior to that stint,

she served as a student assistant at California State University-Hayward.

Having built a reputation as a winner, Hadley finished her collegiate playing career with a pair of conference championships, three postseason appearances, one regional appearance and one national title appearance. At Sierra College in Rocklin, Calif., she was a two-time all-conference choice and helped the Wolverines to a conference crown, in addition to back-to-back Cal JC state playoff berths. She then transferred to Cal State-Hayward, where she was an all-conference performer and helped the Pioneers to conference and regional championships, including an invitation to the 1992 NCAA national championship game, in which her team finished national runner-up.

A highly regarded softball clinician and camp instructor, she co-founded the Bay Area Softball Enterprise in Hayward, Calif. She also has been a personal trainer/nutrition counselor for 24 Hour Fitness, a national promotions manager for Easton Sports, Inc., and special projects/account manager for San Jose Arena Management.

A 1992 graduate of Cal-State Hayward, Hadley has a bachelor's degree in recreation. In 2002, she obtained her master's in sports administration from the University of Northern Colorado, where she is currently pursuing her doctorate in sports management.



### DEDEANN PENDLETON

ASSISTANT COACH | FIFTH SEASON AT CSU  
CREIGHTON (1995)

Dedeann Pendleton is now in her fifth year as an assistant coach at Colorado State. On the diamond, she is responsible for the battery and overseeing the development of the Rams' pitchers and catchers. Pendleton's administrative duties include acting as the scheduling and scouting coordinator, as well as fundraising, alumni relations, equipment, recruiting and team travel.

She rejoined the Colorado State staff from Mississippi, where she was an assistant from 1999-2005. At Ole Miss, she worked with the outfielders, pitchers and hitters, and all phases of recruiting. She tutored numerous Ole Miss players to all-Southeastern Conference honors and helped the Rebels to the program's first winning season since its inception in 1997.

Prior to Mississippi, Pendleton was at Colorado State from 1995-98, helping to lead the Rams to the most successful season in program history in 1997. Working with outfielders and pitchers, she helped the Rams to the Western Athletic Conference championship, the school's highest national ranking (ninth), and a berth in the NCAA regional tournament. She helped tutor two CSU Hall of Fame inductees and All-Americans, Nikki Johnson and Sarah Fredstrom, and All-American Jen Buford.

Pendleton also made a significant impact on the sport of fastpitch softball, having worked for Triple Crown Sports from 1996-98. During her time, she successfully developed Triple Crown's fastpitch softball divi-

sion, which currently hosts the largest fastpitch softball tournament in the world each June in Colorado.

Pendleton spent her collegiate playing career at Creighton University from 1990-95, serving as a pitcher and utility player, playing every position except catcher. During her career she led the Jays' offensive attack and still holds team records in hits, doubles, RBIs and home runs in a season, as well as home runs in a career. She earned first-team all-Missouri Valley Conference honors in 1995 and second-team all-conference in 1994. Pendleton also earned second-team all-region in 1994 and 1995.

Pendleton graduated with a bachelor's degree in psychology in 1995 and is planning on pursuing her master's in counselor education at CSU.



## Volunteer Assistant Coach | Support Staff



# MARTHA DAVIS

**VOLUNTEER ASSISTANT COACH | FIRST SEASON AT CSU  
MIDDLE TENNESSEE STATE (2009)**

Martha Davis joins the 2010 Rams coaching staff after concluding her Middle Tennessee State career as one of the most successful players in program history. Davis led the team her senior season in multiple offensive categories including batting average (.296), hits (45), home runs (6), RBI (30), total bases (71), slugging percentage (.467) and defensive assists (156). She also led the team with 10 multiple-hit and nine multiple-RBI games during her senior campaign. She was named the Middle Tennessee State Female Athlete of the Year her senior year as well as second-team all-Sun Belt Conference for the second

Davis graduated from Middle Tennessee State with a bachelor's degree in physical education in 2009 and is planning on pursuing her master's in administration.

time in her college career.

At Colorado State, Davis will be responsible for assisting coaches during practices as well as helping players improve their offensive and defensive skills.



**Keith Bingham**  
Academic Coordinator



**Tawny Dennis**  
Media Relations



**Crystal Dudley**  
Athletic Trainer



**Jasmine Felix**  
Marketing



**Annie Lopez**  
Athletic Trainer



**Ryan Murphy**  
Equipment



**Jason Phillips**  
Strength & Conditioning



**Dolores Price**  
Administrative Assistant



**Nick Rogers**  
Marketing



# CSU Head Coaches



**Brian Bedard**  
Track & Field



**Jamie Bermel**  
Men's Golf



**Bryan Berryhill**  
Cross Country



**Steve Fairchild**  
Football



**Tom Hilbert**  
Volleyball



**Kristen Holt**  
Women's Basketball



**Angie Hopkins**  
Women's Golf



**John Mattos**  
Swimming & Diving  
Water Polo



**Jon Messick**  
Tennis



**Tim Miles**  
Men's Basketball



**Mary Yori**  
Softball



Denotes reigning MWC  
Coach of the Year



## 2010 Preview

Head Coach Mary Yori begins her 10th season at Colorado State University with the mindset necessary to win another Mountain West Conference championship. Yori believes that this year's squad has the power and speed to be a solid competitor in the MWC.

"We will have more veteran leadership and experienced athletes on the field than we have had in a lot of years," she said. This team is improved, hungry and poised to make a run at having a great year. They are a talented and confident group who believe they can compete with the best."

The Rams will have to pass through some tough tournament competition on their way to reaching their goals as nine of the Rams' tournament opponents received votes in the 2010 preseason polls, with three of those teams landing a spot in the NFCA and ESPN Top 25. The Rams will face No. 8/6 UCLA, No. 12/11 California and No. 25/24 Fresno State before conference play begins.

Colorado State's competition doesn't get any easier once Mountain West Conference action starts as San Diego State and BYU both received votes in the preseason polls.

Colorado State's offense will be led by seniors Allison Majam, Ashley Munoz and Rebecca Penland, along with junior Caitlan Stem and sophomores Christine Thomsen and Jenna Krogh.

These six batters combined for a .343 batting average in 2009 and accounted for 38 of the team's 53 doubles (72 percent), 14 of the team's 17 home runs (82 percent) and 132 of the team's 180 RBI (73 percent).

"Our hitters have really improved over the past few months and I think we are swinging the bats as well as ever," stated Yori. "Those six have all had a great deal of success at the plate and will most likely be the core of our batting lineup."



Rebecca Penland and Christine Thomsen



In the circle for the Rams this season will be Penland, sophomores Danielle Chaplin and Kelli Eubanks along with freshman Kelsey Jo O'Brien.

"Our pitching staff should be the best we have had over the past few years," Yori said. "They are talented and are becoming very consistent in their approach on the mound and in their execution of spotting pitches and attacking batters."

Munoz returns behind the plate this season to help the Rams pitchers with the help of sophomore Amilia Stephens and freshmen Hayley Bolyard and Brittany Palish.

"Ashley Munoz has done a very good job handling the pitching staff and catching duties throughout her previous three years," Yori stated. "She will provide great leadership and experience at this position, along with Stephens, Palish and Bolyard, who will also compete for playing time."

The Rams look to continue solid defensive play from last season, returning the middle infield with Stem getting the start at shortstop for the third consecutive season. Majam and fellow senior Robyn Mask will be vying for playing time at third base with both players adding versatility to the Rams' roster. Sophomore Christine Thomsen is slated to start at first base with fellow sophomores Lyssa Roberts and Ashley MacQueen competing for the starting spot at second base.

"Defensively, we will be quick, scrappy and play with a great intensity," Yori said.

Jenna Krogh will be the starting center fielder with veteran help on both sides from seniors Kayla Kretzman in right field and Sarah Sullivan in left. Junior Ivory Allen has seen her share of time in both left and center fields and newcomer Bri Donahue will also compete for playing time on the grass.

With the combination of power, speed and determination, this team will be a major force in the Mountain West Conference.



Assistant coaches Tonja Hadley and Dedeann Pendleton



## Student-Athlete Profiles



8

## KAYLA KREUTZMAN

SENIOR | OUTFIELD

LOUISVILLE, COLO. (FAIRVIEW HS)

## 2009

Played in 40 games for the Rams in her junior season, starting 32...Recorded a .163 batting average with two doubles and a triple while tallying eight RBI...Notched a .203 slugging percentage and a .227 on-base percentage...Tallied a 1.000 fielding percentage with 24 put-

outs and two assists.

## 2008

Played in 45 games, starting 42 in her sophomore season...Finished the season with a .285 batting average with 35 hits...Scored 18 runs on the season and drove in 13 RBI...Recorded five doubles and one home run...Recorded a career-high three hits at Utah (April 3)...Finished conference play with a .279 batting average with 12 hits and five RBI...Recorded a .975 fielding percentage with 38 putouts and one assist while surrendering one error...Recorded a season-high two RBI three times...Recorded a season-high three hits against Boise State (Feb. 21).

## 2007

Played in 28 games, starting 22 for the Rams in her freshman season...Knocked 15 hits in 67 at bats and finished the season with a .224 batting average...Also hit two doubles and two home runs...Recorded a .962 fielding percentage with 22 putouts and only one error.

## Fairview

Played softball for the Fairview Knights for a year in Boulder, Colo. ...Played previously for Monarch High School...Earned four varsity letters under head coach Dave Kreutzman...Named team MVP twice and earned the Coyote Award in 2003 and 2004...Team was league champs in 2003...Holds the school record for the most consecutive error-free innings played...Was softball team captain in 2005...Earned academic all-state honors in 2003...Played club softball for the Colorado Stars.

## Personal

Full name is Kayla Marie Kreutzman...Born on Feb. 5, 1988, in Boulder, Colo. ...Daughter of Dave and Lori Kreutzman...Has a younger sister, Nikki...Nicknames are K.K. and Kay...Favorite foods are fruit and chocolate...Favorite athlete is Hank Aaron...Majoring in human development and family studies.

## Kreutzman's Career Statistics

| Year  | Avg  | GP-GS  | AB  | R  | H  | 2B | 3B | HR | RBI | TB | SLG% | BB | HBP | SO | GDP | OB%  | SF | SH | SB | ATT | PO | A | E | FLD%  |
|-------|------|--------|-----|----|----|----|----|----|-----|----|------|----|-----|----|-----|------|----|----|----|-----|----|---|---|-------|
| 2007  | .224 | 28-22  | 67  | 8  | 15 | 2  | 0  | 2  | 9   | 23 | .343 | 4  | 2   | 20 | 0   | .284 | 1  | 1  | 0  | 0   | 22 | 3 | 1 | .962  |
| 2008  | .285 | 45-42  | 123 | 18 | 35 | 5  | 0  | 1  | 13  | 43 | .350 | 8  | 3   | 29 | 0   | .341 | 1  | 1  | 1  | 1   | 38 | 1 | 1 | .975  |
| 2009  | .163 | 40-32  | 80  | 6  | 13 | 2  | 1  | 0  | 8   | 17 | .213 | 6  | 1   | 13 | 0   | .227 | 1  | 4  | 0  | 0   | 24 | 2 | 0 | 1.000 |
| TOTAL | .233 | 113-96 | 270 | 32 | 63 | 9  | 1  | 3  | 30  | 83 | .307 | 18 | 6   | 62 | 0   | .293 | 3  | 6  | 1  | 1   | 84 | 6 | 2 | .978  |





16

## ALLISON MAJAM

SENIOR | OUTFIELD/THIRD BASE

PINE VALLEY, CALIF. (MOUNTAIN EMPIRE HS)



### 2009

Played in 42 games for the Rams in her junior campaign, starting 41...One of three players to start all 15 conference games...Ranked 10th in the MWC with a .341 batting average while recording 12 doubles, a triple and two home runs...Tallied 25 RBI while scoring 18 runs...Hit .340 with runners in scoring position and tallied 10 two-out RBI...Recorded a .496 slugging percentage and a .384 on-base percentage...Stole two bases in three attempts...Notched a .902 fielding percentage with 42 putouts and 13 assists...Hit .333 in conference action with five doubles and two homers...Tied with Christine Thomsen for the team lead with 10 RBI in conference play...Ranked 10th in the MWC during conference action with a .563 slugging percentage...Recorded a season-high three hits four times...Recorded a season-high three RBI against Santa Clara (Feb. 28)...Finished the season with an 11-game hit streak...Named to the MWC academic all-conference team and received MWC Scholar Athlete honors with a 3.72 GPA.

### 2008

Played in all 51 games for the Rams in her sophomore season with 51 starts...Finished the season with a .331 batting average while hitting 12 doubles and eight home runs...Recorded 34 RBI and scored 34 runs...Recorded a .544 slugging percentage and a .374 on base percentage...Recorded a season- and career-high four hits against UC Riverside (Feb. 22) and two doubles at Northern Colorado (March 29)...In conference play, batted .328 with four doubles, three home runs and 12 RBI...Finished the season with a .943 fielding percentage with 48 putouts and two assists while surrendering only three errors...Named to the all-MWC team for the second time in as many seasons...Earned a spot on the academic

all-conference team and was named a Scholar Athlete with a 3.71 GPA.

### 2007

Played in 57 games for the Rams in her freshman season, starting 51...Led the team and ranked fifth in the MWC in batting average, hitting .371...Ranked second on the team and seventh in the MWC in slugging percentage (.635) and was third on the team with an on-base percentage of .420...Ranked fourth on the team in runs scored with 33...Led the team with 63 hits and ranked sixth in the MWC...Ranked second on the team, ninth in the MWC, with 35 RBI...Led the team and the MWC with 18 doubles and ranked third on the team with nine home runs on the season...Batted 3-for-4 four times against three different teams, twice against New Mexico...Recorded a career- and season-best five RBI against BYU...Earned a spot on the all-MWC team...Garnered academic all-conference honors as well as a Scholar Athlete award with a GPA of 3.74.

### Mountain Empire

Was a three-sport athlete for the Mountain Empire Redhawks...Played softball under coach Rick Abood...Earned four varsity letters in softball, two in basketball and two in soccer...Named team MVP for softball in 2003, 2004 and 2005...Named first-team all-league all four years...Named first-team all-division all four years...Named to the all-academic team in 2004 and 2005...Member of the league champion team all four years...Holds the school record for career home runs...Softball team captain in 2005...Named female Scholar Athlete in 2006...Played club softball for the So Cal Breakers.

### Personal

Full name is Allison Nicole Majam...Born on Nov. 3, 1988, in San Diego, Calif. ...Daughter of Rosben and Patricia Majam...Has three sisters, Kelly, Mari and Grayce...Nicknames are Al and A-Maj...Favorite foods are rice, pasta and jelly bellies...Favorite athletes are Leah O'Brien-Amico and Albert Pujols...Majoring in construction management.

### Majam's Career Statistics

| Year  | Avg  | GP-GS   | AB  | R  | H   | 2B | 3B | HR | RBI | TB  | SLG% | BB | HBP | SO | GDP | OB%  | SF | SH | SB | ATT | PO  | A  | E  | FLD% |
|-------|------|---------|-----|----|-----|----|----|----|-----|-----|------|----|-----|----|-----|------|----|----|----|-----|-----|----|----|------|
| 2007  | .371 | 57-51   | 170 | 33 | 63  | 18 | 0  | 9  | 35  | 108 | .635 | 15 | 1   | 30 | 0   | .420 | 2  | 3  | 0  | 2   | 52  | 5  | 4  | .934 |
| 2008  | .331 | 51-51   | 169 | 34 | 56  | 12 | 0  | 8  | 34  | 92  | .544 | 11 | 3   | 24 | 0   | .374 | 4  | 3  | 8  | 8   | 48  | 2  | 3  | .943 |
| 2009  | .341 | 42-41   | 129 | 18 | 44  | 12 | 1  | 2  | 25  | 64  | .496 | 8  | 1   | 9  | 0   | .384 | 0  | 3  | 2  | 3   | 42  | 13 | 6  | .902 |
| TOTAL | .348 | 150-143 | 468 | 85 | 163 | 42 | 1  | 19 | 94  | 264 | .564 | 34 | 5   | 63 | 0   | .394 | 6  | 9  | 10 | 13  | 142 | 20 | 13 | .926 |







3

ROBYN MASK

SENIOR | INFIELD  
VANCOUVER, WASH. (PRAIRIE HS)

**2009**  
Played 42 games for Colorado State in her junior season, starting 36...Hit .188 with five doubles and 10 RBI...Recorded a .247 slugging percentage and a .266 on-base percentage...Finished the season with three stolen bases in three attempts...Finished with a .934 fielding percentage with 44 putouts and 70 assists...Recorded a career-high four RBI against Cleveland State (Feb. 7)...Hit .115 in MWC action with one double.

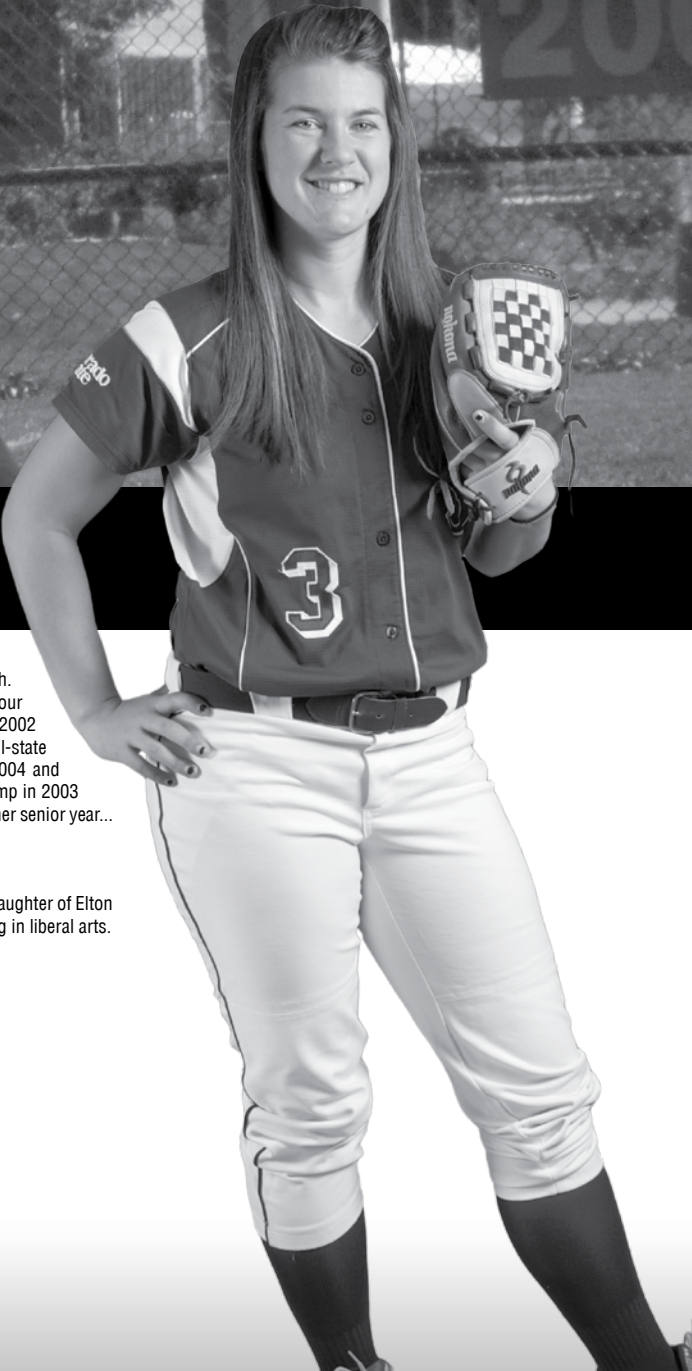
**2008**  
Played and started all 51 games in her sophomore season for the Rams...Finished the season with a .255 batting average with 35 hits in 137 at-bats...Knocked in four doubles and hit four home runs and garnered 20 RBI...Recorded eight multiple-hit games and five multiple-RBI games...Notched a season-best three RBI against Portland State (Feb. 8)...Finished the season with a .953 fielding percentage with 118 putouts and 87 assists.

**2007**  
Played in all 58 games, starting 57 in her freshman season for the Rams...Started the season with a .444 batting average and hit five home runs in the first seven games...Finished the season with a .255 batting average...Batted above .500 in six games and posted a career-best four RBI against New Mexico State...Recorded a .944 fielding percentage with 92 putouts and only 13 errors...Also recorded nine double plays.

| Mask's Career Statistics |      |         |     |    |    |    |    |    |     |     |      |    |     |    |     |      |    |    |    |     |     |     |    |      |
|--------------------------|------|---------|-----|----|----|----|----|----|-----|-----|------|----|-----|----|-----|------|----|----|----|-----|-----|-----|----|------|
| Year                     | Avg  | GP-GS   | AB  | R  | H  | 2B | 3B | HR | RBI | TB  | SLG% | BB | HBP | SO | GDP | OB%  | SF | SH | SB | ATT | PO  | A   | E  | FLD% |
| 2007                     | .255 | 58-57   | 102 | 19 | 26 | 4  | 0  | 6  | 15  | 48  | .471 | 12 | 0   | 34 | 1   | .333 | 0  | 2  | 0  | 0   | 92  | 126 | 13 | .944 |
| 2008                     | .255 | 51-51   | 137 | 28 | 35 | 4  | 0  | 4  | 20  | 51  | .372 | 17 | 2   | 24 | 0   | .346 | 0  | 3  | 4  | 7   | 118 | 87  | 10 | .953 |
| 2009                     | .188 | 42-36   | 85  | 11 | 16 | 5  | 0  | 0  | 10  | 21  | .247 | 9  | 0   | 21 | 1   | .266 | 0  | 6  | 3  | 3   | 44  | 70  | 8  | .934 |
| TOTAL                    | .238 | 151-144 | 324 | 58 | 77 | 13 | 0  | 10 | 45  | 120 | .370 | 38 | 2   | 79 | 2   | .321 | 0  | 11 | 7  | 10  | 254 | 283 | 31 | .945 |

**Prairie**  
Was a two-sport athlete for the Prairie High School Falcons in Vancouver, Wash. ...Played softball under coach Dawn Rowe, at shortstop and third base...Earned four varsity letters in softball, two in volleyball...Named second-team all-league in 2002 and 2003, and first-team all-league in 2004 and 2005...Named second-team all-state in 2005...Earned the Coach's Award in 2003...Named first-team all-region in 2004 and 2005...Member of the all-region all-season team in 2004...Team was league champ in 2003 and 2005...Member of the state champion team in 2005...Varsity softball captain her senior year... Graduated with honors.

**Personal**  
Full name is Robyn Lenae Mask...Born on May 23, 1988, in Vancouver, Wash. ....Daughter of Elton and Tani Mask...Has two sisters, Sarah and Kelli...Favorite food is pizza...Majoring in liberal arts.







# 33 ASHLEY MUNOZ

SENIOR | CATCHER  
DIAMOND BAR, CALIF. (DIAMOND RANCH HS)

## 2009

Played in all 51 games for the Rams in her junior campaign, starting 42...Finished the season with a .272 batting average...Recorded three doubles and four home runs while tallying 25 RBI...Notched a .392 slugging percentage and a .368 on-base percentage...Recorded a .948 fielding percentage with 138 putouts and 11 assists...Recorded a season-

high three hits and a career-high six RBI against Ohio (Feb. 6)...Hit .233 in conference play with one home run...Named to the MWC academic all-conference team with a 3.11 GPA.

## 2008

Played and started all 51 games for the Rams in her sophomore season...Hit .327 on the season with 10 doubles, a triple, eight home runs and 30 RBI...Recorded a .553 slugging percentage and a .412 on-base percentage...Hit .328 in conference play with four doubles, five home runs and 16 RBI...Recorded a season- and career-high four hits at Utah (April 3)...Finished the season with a .991 fielding percentage with 196 putouts and 23 assists while surrendering two errors...Named to the all-MWC team for the second time in as many seasons...Earned a spot on the academic all-conference team with a 3.10 GPA.

## 2007

Played in 50 games for the Rams in her freshman season, starting 45...Ranked fourth on the team with a .316 batting average...Led the team and ranked second in the MWC with a .699 slugging percentage...Ranked fourth on the team in on-base percentage (.420)...Notched 42 hits and 31

RBI...Hit nine doubles and led the team and tied for fourth place in the MWC with 14 home runs...Recorded a career- and season-best three RBI in three different games and hit above .500 in 10 games...Recorded a fielding percentage of .960 with 92 putouts and only four errors...Earned the MWC Freshman of the Year award...Earned a spot on the all-MWC team and the academic all-conference team.

## Diamond Ranch

Played softball for the Diamond Ranch Panthers in Diamond Bar, Calif., under coach Don Fennell...Varsity letterwinner all four years in softball...Named second-team all-league in 2002 and 2003...Named first-team all-league in 2004 and 2005...Named team MVP in 2004...Named best offensive player in 2005...Team was league champ in 2005...Played club softball for Team Smith.

## Personal

Full name is Ashley Alexis Munoz...Born on Sept. 17, 1988, in Monterey Park, Calif. ...Daughter of Javier and Tina Munoz...Has one brother, George, and one sister, Andrea...Nickname is Smash...Favorite food is sushi...Favorite athlete is Kobe Bryant...Majoring in business administration.

## Munoz's Career Statistics

| Year  | Avg  | GP-GS   | AB  | R  | H   | 2B | 3B | HR | RBI | TB  | SLG% | BB | HBP | SO | GDP | OB%  | SF | SH | SB | ATT | PO  | A  | E  | FLD% |
|-------|------|---------|-----|----|-----|----|----|----|-----|-----|------|----|-----|----|-----|------|----|----|----|-----|-----|----|----|------|
| 2007  | .316 | 50-45   | 133 | 29 | 42  | 9  | 0  | 14 | 31  | 93  | .699 | 22 | 4   | 19 | 0   | .420 | 3  | 2  | 0  | 1   | 92  | 4  | 4  | .960 |
| 2008  | .327 | 51-51   | 159 | 29 | 52  | 10 | 1  | 8  | 30  | 88  | .553 | 18 | 7   | 26 | 0   | .412 | 3  | 3  | 1  | 1   | 196 | 23 | 2  | .991 |
| 2009  | .272 | 51-42   | 125 | 16 | 34  | 3  | 0  | 4  | 25  | 49  | .392 | 16 | 3   | 20 | 0   | .368 | 0  | 4  | 0  | 0   | 138 | 11 | 4  | .974 |
| TOTAL | .307 | 152-138 | 417 | 74 | 128 | 22 | 1  | 26 | 86  | 230 | .552 | 56 | 14  | 65 | 0   | .402 | 6  | 9  | 1  | 2   | 426 | 38 | 10 | .979 |



14

# REBECCA PENLAND

SENIOR | PITCHER/OUTFIELD  
RIVERSIDE, CALIF. (RIVERSIDE POLY HS)



## 2009

Played in 45 games for Colorado State, starting 41 in her junior season...Hit .274 with six doubles, one home run and 15 RBI...Hit .311 with runners in scoring position...Recorded a .347 slugging percentage and a .316 on-base percentage...Finished the season with a 1.000 fielding percentage with 54 putouts and three assists...Made 13 appearances in the circle

with four starts...Garnered a 6.40 ERA with a 1-6 record and one complete game...Led the team with two saves...Tossed 27.1 innings, allowing 10 walks while striking out 20 batters...Hit .262 in conference action with two doubles and one homer while tallying nine RBI...Recorded a season-high three RBI against San Diego State (April 26).

## 2008

Played in 38 games in her sophomore season, starting in 37...Finished the season with a .311 batting average while recording 11 doubles, four home runs and 25 RBI...Hit .361 in conference play in 19 games...Recorded a .525 slugging percentage and a .426 on-base percentage in conference play with an overall slugging percentage of .500 and an overall on base percent-

age of .354...Had a career-high three hits against No. 12 Northwestern (March 21) and a career-high four RBI against UNLV (April 18)...Pitched 106.2 innings and recorded an 8-5 record...Finished the season with a 5.18 ERA while fanning 64 batters...Held opposing batters to a .319 batting average...Finished the season with a 1.000 fielding percentage with seven putouts and 30 assists...Named to the 2008 all-MWC team.

## 2007

Played in 39 games for the Rams, starting 26, with 25 in the circle...Hit .200 with 16 hits and five RBI...Recorded seven doubles and one home run, which came against Iowa State...Pitched in 80.2 innings and ended the season with a 5.38 ERA...Struck out 77 batters and finished with a record of 6-5...Had a career-best 11 strikeouts against Iowa State...Notched a fielding percentage of .962 with three putouts and 22 assists with one error.

## Riverside Poly

Was a two-sport athlete for the Riverside Poly Bears in Riverside, Calif. ...Played softball under coach Eddie Jones...Earned three varsity letters in softball...Named to the all-league team three years...Named second-team all-state...Named to the all-tournament team for the Corona and Thousand Oaks tournaments...Member of the league champion team four years...Member of the state champion team in 2004...Holds school record for lowest ERA...Softball captain in 2005...

Played club softball for the American Pastimes, American Athletes and Vipers Gold.

## Personal

Full name is Rebecca Penland...Born on Oct. 10, 1988, in Riverside, Calif. ...Daughter of John and Sally Penland...Has one brother, J.J....Nickname is Becca-Bear...Favorite food is Mexican...Favorite athletes are Andy Pettitte and Lance Armstrong...Majoring in human development and family studies.

## Penland's Career Statistics

| Year         | Avg         | GP-GS          | AB         | R         | H         | 2B        | 3B       | HR       | RBI       | TB         | SLG%        | BB        | HBP      | SO        | GDP      | OB%         | SF       | SH        | SB       | ATT      | PO        | A         | E        | FLD%        |
|--------------|-------------|----------------|------------|-----------|-----------|-----------|----------|----------|-----------|------------|-------------|-----------|----------|-----------|----------|-------------|----------|-----------|----------|----------|-----------|-----------|----------|-------------|
| 2007         | .200        | 37-24          | 80         | 7         | 16        | 7         | 0        | 1        | 5         | 26         | .325        | 12        | 0        | 22        | 1        | .304        | 0        | 1         | 0        | 0        | 3         | 22        | 1        | .962        |
| 2008         | .311        | 38-37          | 122        | 16        | 38        | 11        | 0        | 4        | 25        | 61         | .500        | 7         | 1        | 16        | 1        | .354        | 0        | 5         | 0        | 0        | 7         | 30        | 0        | 1.000       |
| 2009         | .274        | 45-41          | 124        | 10        | 34        | 6         | 0        | 1        | 15        | 43         | .347        | 7         | 1        | 12        | 1        | .316        | 1        | 4         | 0        | 0        | 54        | 3         | 0        | 1.000       |
| <b>TOTAL</b> | <b>.270</b> | <b>120-102</b> | <b>326</b> | <b>33</b> | <b>88</b> | <b>24</b> | <b>0</b> | <b>6</b> | <b>45</b> | <b>130</b> | <b>.399</b> | <b>26</b> | <b>2</b> | <b>50</b> | <b>3</b> | <b>.327</b> | <b>1</b> | <b>10</b> | <b>0</b> | <b>0</b> | <b>64</b> | <b>55</b> | <b>1</b> | <b>.992</b> |

| Year         | ERA         | W-L          | App       | GS        | CG       | SHO      | CBO      | SV       | IP           | H          | R          | ER         | BB        | SO         | 2B        | 3B       | HR        | BF          | B/Avg       | WP        | HBP       | SFA      | SHA       |
|--------------|-------------|--------------|-----------|-----------|----------|----------|----------|----------|--------------|------------|------------|------------|-----------|------------|-----------|----------|-----------|-------------|-------------|-----------|-----------|----------|-----------|
| 2007         | 5.38        | 6-5          | 25        | 12        | 4        | 2        | 0        | 1        | 80.2         | 107        | 70         | 62         | 34        | 77         | 12        | 3        | 14        | 390         | .325        | 10        | 9         | 3        | 15        |
| 2008         | 5.18        | 8-5          | 30        | 14        | 2        | 0        | 0        | 1        | 106.2        | 145        | 100        | 79         | 33        | 64         | 31        | 5        | 12        | 520         | .319        | 5         | 13        | 3        | 16        |
| 2009         | 6.40        | 1-6          | 13        | 4         | 1        | 0        | 0        | 2        | 27.1         | 45         | 34         | 25         | 10        | 20         | 12        | 0        | 6         | 146         | .352        | 4         | 5         | 1        | 2         |
| <b>TOTAL</b> | <b>5.41</b> | <b>15-16</b> | <b>68</b> | <b>30</b> | <b>7</b> | <b>2</b> | <b>0</b> | <b>4</b> | <b>214.2</b> | <b>297</b> | <b>204</b> | <b>166</b> | <b>77</b> | <b>161</b> | <b>55</b> | <b>8</b> | <b>32</b> | <b>1056</b> | <b>.326</b> | <b>19</b> | <b>27</b> | <b>7</b> | <b>33</b> |





# 20 SARAH SULLIVAN

SENIOR | OUTFIELD  
STERLING, COLO. (STERLING HS)

## 2009

Played in 30 games during her junior season, starting 18...Recorded a .204 batting average with one double and six runs scored... Finished the season with a .222 slugging percentage and a .259 on-base percentage... Recorded a 1.000 fielding percentage with 29 putouts and no errors...Hit .250 during conference action with one double and two

runs scored...Recorded a .313 slugging percentage and a .333 on-base percentage during MWC play...Recorded a season-high three hits against Cleveland State (Feb. 7).

## 2008

Played in 32 games in her sophomore season for the Rams, starting 25...Finished the season with a .203 batting average with three doubles, three home runs and 16 RBI...Scored 15 runs for the Rams...Hit .261 in conference play with two homers and 11 RBI...Finished the season with a .958 fielding percentage with 22 putouts and one assist while surrendering one error.

## 2007

Played in 24 games for the Rams in her freshman season, starting nine...Hit .143 with four hits and three RBI...Hit one home run, against Utah State...Recorded a fielding percentage of .800 with four putouts and one error.

## Sullivan's Career Statistics

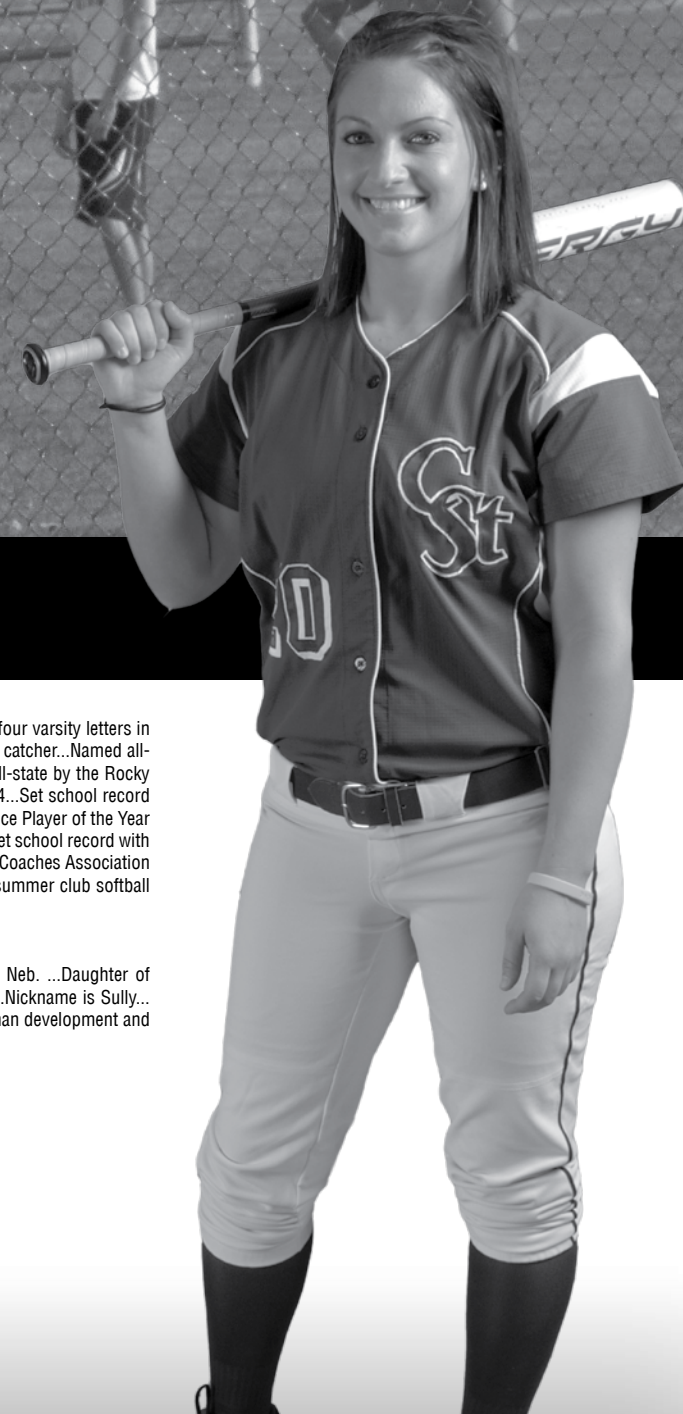
| Year  | Avg  | GP-GS | AB  | R  | H  | 2B | 3B | HR | RBI | TB | SLG% | BB | HBP | SO | GDP | OB%  | SF | SH | SB | ATT | PO | A | E | FLD%  |
|-------|------|-------|-----|----|----|----|----|----|-----|----|------|----|-----|----|-----|------|----|----|----|-----|----|---|---|-------|
| 2007  | .143 | 24-9  | 28  | 9  | 4  | 0  | 0  | 1  | 3   | 7  | .250 | 2  | 0   | 14 | 0   | .200 | 0  | 2  | 0  | 0   | 4  | 0 | 1 | .800  |
| 2008  | .203 | 32-25 | 59  | 15 | 12 | 3  | 0  | 3  | 16  | 24 | .407 | 10 | 2   | 20 | 0   | .329 | 2  | 1  | 0  | 0   | 22 | 1 | 1 | .958  |
| 2009  | .204 | 30-18 | 54  | 6  | 11 | 1  | 0  | 0  | 0   | 12 | .222 | 3  | 1   | 17 | 0   | .259 | 0  | 0  | 0  | 0   | 29 | 0 | 0 | 1.000 |
| TOTAL | .191 | 86-52 | 141 | 30 | 27 | 4  | 0  | 4  | 19  | 43 | .305 | 15 | 3   | 51 | 0   | .280 | 2  | 3  | 0  | 0   | 55 | 1 | 2 | .966  |

## Sterling

Was a three-sport athlete for the Sterling Tigers in Sterling, Colo. ...Earned four varsity letters in softball, playing under head coach Jenny Smock, at shortstop, outfield and catcher...Named all-Tri-Valley Conference shortstop in 2003...Was named honorable-mention all-state by the Rocky Mountain News in 2003...Named all-Northern Conference shortstop in 2004...Set school record with five home runs in a season in 2004...Named softball Northern Conference Player of the Year and all-conference catcher in 2005...Varsity softball team captain in 2005...Set school record with 10 home runs in her career in 2005...Was an all-state Colorado High School Coaches Association selection...Received school all-sports team athlete award in 2006...Played summer club softball with the Greeley Classics and the Fort Collins Triple Crown Stars.

## Personal

Full name is Sarah Jean Sullivan...Born on Dec. 3, 1987, in North Platte, Neb. ...Daughter of Michael and Julie Sullivan...Has one brother, Sean, and one sister, Megan...Nickname is Sully...Favorite food is potatoes...Favorite athlete is Albert Pujols...Majoring in human development and family studies.





## Student-Athlete Profiles



11

## IVORY ALLEN

JUNIOR | OUTFIELD  
DENVER, COLO. (THOMAS JEFFERSON HS)

## 2009

Played in 16 games in her sophomore campaign, starting

13...Hit .208 with four runs scored...Recorded a .208 slugging percentage and a .345 on-base percentage...Notched a 1.000 fielding percentage with 11 putouts in the outfield.

## 2008

Played in 41 games for the Rams in her freshman season, starting 36...Finished the season with a .220 batting average with nine hits in 41 at bats and scored 17 runs...Recorded a career- and season-high three hits at Northern Colorado (March 29)...Played and started in 18 conference games and recorded a .211 batting average in conference play...Finished the season with an .897 fielding percentage with 32 putouts and three assists.

## Thomas Jefferson

Was a three-sport athlete for the Thomas Jefferson Spartans in Denver, Colo. ...Earned three varsity letters in softball under head coach Kyler Jackson...Earned second-team all-city honors in 2004 and first-team all-city in 2005 and 2006...Was named to the Colorado Coaches of Girls Sports (CCGS) All-Star/All-State Team in 2006...Also named to the Denver Post all-state team in 2006 and Denver Post all-state honorable-mention in 2005...

Earned Outstanding Player for the Spartans in 2006...Was the 2004 Gatorade Will to Win player...Member of the city champions team in 2005 and 2006...Member of the district champion team in 2006...Was part of the first softball team from Thomas Jefferson to make the Colorado state tournament...Was varsity captain in 2005 and 2006...Played club softball for the Arvada Blue Jays.

## Personal

Full name is Ivory Lynne Allen...Born on Oct. 5, 1989, in Denver, Colo. ...Daughter of Damion and Cynthia Allen...Has two brothers, Demetrius and Marcus...Nickname is Ives...Favorite food is French fries...Favorite athlete is Huston Street...Majoring in human development and family studies.

## Allen's Career Statistics

| Year  | Avg  | GP-GS | AB | R  | H  | 2B | 3B | HR | RBI | TB | SLG% | BB | HBP | SO | GDP | OB%  | SF | SH | SB | ATT | PO | A | E | FLD%  |
|-------|------|-------|----|----|----|----|----|----|-----|----|------|----|-----|----|-----|------|----|----|----|-----|----|---|---|-------|
| 2008  | .220 | 41-36 | 41 | 17 | 9  | 0  | 0  | 0  | 0   | 9  | .220 | 5  | 0   | 16 | 0   | .304 | 0  | 6  | 2  | 2   | 32 | 3 | 4 | .897  |
| 2009  | .208 | 16-13 | 24 | 4  | 5  | 0  | 0  | 0  | 0   | 5  | .208 | 5  | 0   | 7  | 0   | .345 | 0  | 1  | 1  | 1   | 11 | 0 | 0 | 1.000 |
| TOTAL | .215 | 57-49 | 65 | 21 | 14 | 0  | 0  | 0  | 0   | 14 | .215 | 10 | 0   | 23 | 0   | .320 | 0  | 7  | 3  | 3   | 43 | 3 | 4 | .920  |



23

## CAITLAN STEM

JUNIOR | INFIELD  
BROOMFIELD, COLO. (BROOMFIELD HS)

## 2009

Played and started in 51 games at shortstop for the Rams in

her sophomore campaign...Was the only player to start all 51 games and one of three players to start all 15 conference games...Led the team and ranked fifth in the MWC with a .372 overall batting average...Ranked second on the team and tied for eighth in the MWC with 11 doubles...Led the team with three triples and six home runs...Recorded 26 RBI and ranked second in the conference with 44 runs scored...Hit .485 with runners in scoring position and tallied 15 two-out RBI...Ranked eighth in the MWC with a .576 slugging percentage and a .440 on-base percentage...Finished the season 7-for-8 in stolen-base attempts...Garnered a .911 fielding percentage with 64 putouts and ranked second in the MWC with 121 assists...Hit .377 in conference action with two doubles, a triple and three homers while tallying a team-best 33 RBI...Ranked third in the MWC during conference action with 15 runs scored and ranked eighth in the MWC during conference play with a .623 slugging percentage...Recorded a season-high two doubles against Nevada (March 18)...Recorded a season-high four hits against UC Riverside (Feb. 13)...Finished the season with 14 two-hit games, five three-hit games and one four-hit performance...Earned a spot on the all-MWC team.

## 2008

Played and started in all 51 games for the Rams in her freshman season...Hit .374 on the season, second on the team...Led the team with 16 doubles on the season...Ranked 28th nation-

ally with 0.31 doubles per game...Hit six round-trippers during the season and knocked in 38 RBI to rank second on the team...Scored 44 runs to rank second on the team...Recorded a .585 slugging percentage with a .443 on-base percentage...Notched a career- and season-high four RBI against UC Riverside (Feb. 22)...Recorded a career- and season-high two home runs against No. 8 Oklahoma (March 14)...Hit .324 in conference play with six doubles, a home run and 12 RBI...In the field, recorded an .897 fielding percentage with 74 putouts and 143 assists at shortstop.

## Broomfield

Was a two-sport athlete for the Broomfield Eagles in Broomfield, Colo. ...Earned four varsity letters in softball under head coach Paula Seifreid...Member of the Skyline League champion team in 2003...Was named all-state honorable mention all four years...Named to the all-region team in 2003, 2005 and 2006...Named varsity captain in 2006...Played club softball for the Colorado Stars Gold.

## Personal

Full name is Caitlan Marie Stem...Born on Jan. 28, 1989...Daughter of Tom and Nancy Stem...Has one sister, Kristi...Nickname is Bug...Favorite food is meat...Favorite athlete is Michael Jordan...Majoring in communication studies.

## Stem's Career Statistics

| Year  | Avg  | GP-GS   | AB  | R  | H   | 2B | 3B | HR | RBI | TB  | SLG% | BB | HBP | SO | GDP | OB%  | SF | SH | SB | ATT | PO  | A   | E  | FLD% |
|-------|------|---------|-----|----|-----|----|----|----|-----|-----|------|----|-----|----|-----|------|----|----|----|-----|-----|-----|----|------|
| 2008  | .374 | 51-51   | 171 | 44 | 64  | 16 | 1  | 6  | 38  | 100 | .585 | 20 | 2   | 34 | 0   | .443 | 1  | 4  | 6  | 10  | 74  | 143 | 25 | .897 |
| 2009  | .372 | 51-51   | 172 | 44 | 64  | 11 | 3  | 6  | 26  | 99  | .576 | 19 | 2   | 17 | 0   | .440 | 0  | 2  | 7  | 8   | 64  | 121 | 18 | .911 |
| TOTAL | .373 | 102-102 | 343 | 88 | 128 | 27 | 4  | 12 | 64  | 199 | .580 | 39 | 4   | 51 | 0   | .442 | 1  | 6  | 13 | 18  | 138 | 264 | 43 | .903 |





12

## DANIELLE CHAPLIN

SOPHOMORE | PITCHER  
BRIGHTON, COLO. (BRIGHTON HS)

## 2009

Made 23 appearances in the circle for the Rams in her

freshman season with 18 starts...Tossed five complete games...Recorded a 4.41 ERA and a 7-6 record with one shutout...Finished conference play with a 2-1 record and a 7.57 ERA in 20.1 innings pitched...Recorded a complete-game shutout against Dartmouth (March 19)...Notched a career-high five strikeouts against Santa Clara (Feb. 28), Dartmouth (March 19) and Utah (May 7)...Pitched 79.1 total innings while recording 47 strikeouts...Held opposing batters to a .277 clip and ranked eighth in the MWC...Recorded a .941 fielding percentage with one putout and 31 assists.

## Brighton

Played softball for the Brighton Bulldogs in Brighton, Colo., under coach Bruce Stricklett...Earned four varsity letters in softball and two in basketball...Garnered all-conference in 2005, 2006 and 2007...Named Brighton Defensive Player of the Year in 2005, 2006 and 2007...Named Brighton Offensive Player of the Year in 2007...Earned Skyline League MVP in 2007...Named to the 2007 all-state team...Named to the all-Colorado team in 2007...Recorded 225 strikeouts in her career at Brighton to hold

## Chaplin's Career Statistics

| Year  | Avg  | GP-GS | AB | R | H | 2B | 3B | HR | RBI | TB | SLG% | BB | HBP | SO | GDP | OB%  | SF | SH | SB | ATT | PO | A | E | FLD% |
|-------|------|-------|----|---|---|----|----|----|-----|----|------|----|-----|----|-----|------|----|----|----|-----|----|---|---|------|
| 2009  | .000 | 1-1   | 0  | 0 | 0 | 0  | 0  | 0  | 0   | 0  | .000 | 0  | 0   | 0  | 0   | .000 | 0  | 0  | 0  | 1   | 31 | 2 |   | .941 |
| TOTAL | .000 | 1-1   | 0  | 0 | 0 | 0  | 0  | 0  | 0   | 0  | .000 | 0  | 0   | 0  | 0   | .000 | 0  | 0  | 0  | 1   | 31 | 2 |   | .941 |

| Year  | ERA  | W-L | App | GS | CG | SHO | CBO | SV | IP   | H  | R  | ER | BB | SO | 2B | 3B | HR | BF  | B/Avg | WP | HBP | SFA | SHA |
|-------|------|-----|-----|----|----|-----|-----|----|------|----|----|----|----|----|----|----|----|-----|-------|----|-----|-----|-----|
| 2009  | 4.41 | 7-6 | 23  | 18 | 5  | 1   | 0   | 0  | 79.1 | 92 | 64 | 50 | 33 | 47 | 10 | 4  | 4  | 377 | .277  | 9  | 3   | 0   | 9   |
| TOTAL | 4.41 | 7-6 | 23  | 18 | 5  | 1   | 0   | 0  | 79.1 | 92 | 64 | 50 | 33 | 47 | 10 | 4  | 4  | 377 | .277  | 9  | 3   | 0   | 9   |



15

## KELLI EUBANKS

SOPHOMORE | PITCHER  
TROUTDALE, ORE. (REYNOLDS HS)

## 2009

Made 34 appearances and ranked eighth in the MWC

during her freshman campaign, starting 23 games...Finished 10-11 on the season and ranked sixth in the conference with a 3.09 ERA...Ranked sixth in the conference with a .270 opposing batting average...Recorded 13 complete games with five shutouts and one save...Ranked fifth in the MWC with 167.2 innings pitched and 131 strikeouts...Recorded a career-high eight strikeouts against New Mexico (April 19)...Recorded a .957 fielding percentage with eight putouts and 37 assists...Finished conference play 3-5 with a 4.93 ERA in 61 innings pitched...Named MWC Pitcher of the Week on March 3 after finishing the San Diego Classic I with a 2-0 record and 0.00 ERA...Earned a spot on the all-MWC team.

## Reynolds

Played softball for the Reynolds Raiders in Troutdale, Ore., under coaches Erin and Dave Searight...Varsity letterwinner all four years...Garnered first-team all-conference in 2007...Named Conference Pitcher of the Year in 2007...Named second-team all-state in 2007...Won the Raider Award in 2007...Broke the school's strikeout record in 2007 with 244...Named a 2008 Army Female Scholar Athlete...Played club softball with CSU junior Robyn Mask...Played club softball for the Glacier Gold and Oregon Panthers Gold.

## Personal

Full name is Kelli Marie Eubanks...Born Dec. 1, 1989, in Starkville, Miss. ...Daughter of David and Laura Eubanks...Has one younger brother, Drew...Nicknames are Easy E and Grace Kelly...Favorite foods are Italian and sushi...Favorite athlete is Peyton Manning...Majoring in psychology.

## Eubanks's Career Statistics

| Year  | Avg  | GP-GS | AB | R | H | 2B | 3B | HR | RBI | TB | SLG% | BB | HBP | SO | GDP | OB%  | SF | SH | SB | ATT | PO | A  | E | FLD% |
|-------|------|-------|----|---|---|----|----|----|-----|----|------|----|-----|----|-----|------|----|----|----|-----|----|----|---|------|
| 2009  | .000 | 0-0   | 0  | 0 | 0 | 0  | 0  | 0  | 0   | 0  | .000 | 0  | 0   | 0  | 0   | .000 | 0  | 0  | 0  | 0   | 8  | 37 | 2 | .957 |
| TOTAL | .000 | 0-0   | 0  | 0 | 0 | 0  | 0  | 0  | 0   | 0  | .000 | 0  | 0   | 0  | 0   | .000 | 0  | 0  | 0  | 0   | 8  | 37 | 2 | .957 |

| Year  | ERA  | W-L   | App | GS | CG | SHO | CBO | SV | IP    | H   | R  | ER | BB | SO  | 2B | 3B | HR | BF  | B/Avg | WP | HBP | SFA | SHA |
|-------|------|-------|-----|----|----|-----|-----|----|-------|-----|----|----|----|-----|----|----|----|-----|-------|----|-----|-----|-----|
| 2009  | 3.09 | 10-11 | 34  | 23 | 13 | 5   | 0   | 1  | 167.2 | 180 | 93 | 74 | 46 | 131 | 30 | 2  | 15 | 747 | .270  | 9  | 8   | 5   | 21  |
| TOTAL | 3.09 | 10-11 | 34  | 23 | 13 | 5   | 0   | 1  | 167.2 | 180 | 93 | 74 | 46 | 131 | 30 | 2  | 15 | 747 | .270  | 9  | 8   | 5   | 21  |



## Student-Athlete Profiles



7

## CHELSEA FREIBERG

SOPHOMORE | INFIELD  
LAKEWOOD, COLO. (GREEN MOUNTAIN HS)

## 2009

Played in integral role in the Rams practice squad.

## Personal

Full name is Chelsea Marie Freiberg...Born on Jan. 12, 1990, in Denver, Colo. ...Daughter of Judy and the late Tye Freiberg...Has two older brothers, Josh and Adam, and one older sister, Shawna...Nickname is Chels...Favorite food is salad...Favorite athlete is Sidney Crosby...Majoring in biomedical sciences.

## Green Mountain

Played for the Green Mountain Rams in Lakewood, Colo., under head coach Vince Schade...Earned two varsity letters in softball...Named honorable-mention all-conference in 2006...Garnered academic all-state honors in 2007 and 2008...Lettered in academics all four years of high school...Member of National Honor Society in 2007 and 2008...Played club softball for the Arvada Blue Jays.

## Freiberg's Career Statistics

| Year  | Avg  | GP-GS | AB | R | H | 2B | 3B | HR | RBI | TB | SLG% | BB | HBP | SO | GDP | OB%  | SF | SH | SB | ATT | PO | A | E | FLD% |
|-------|------|-------|----|---|---|----|----|----|-----|----|------|----|-----|----|-----|------|----|----|----|-----|----|---|---|------|
| 2009  | .000 | 0-0   | 0  | 0 | 0 | 0  | 0  | 0  | 0   | 0  | .000 | 0  | 0   | 0  | 0   | .000 | 0  | 0  | 0  | 0   | 0  | 0 | 0 | .000 |
| TOTAL | .000 | 0-0   | 0  | 0 | 0 | 0  | 0  | 0  | 0   | 0  | .000 | 0  | 0   | 0  | 0   | .000 | 0  | 0  | 0  | 0   | 0  | 0 | 0 | .000 |



2

## JENNA KROGH

SOPHOMORE | OUTFIELD  
PORTLAND, ORE. (WESTVIEW HS)

## 2009

Played and started 50 games in her freshman campaign

at Colorado State...One of three players to start all 15 conference games...Recorded a .338 batting average with one triple and one double while tallying nine RBI and scoring 29 runs...Tied for eighth in the MWC with 53 hits...Recorded a .357 slugging percentage and a .392 on-base percentage...Recorded a team-best 17-game hit streak during the season...Stole nine bases on the season in 12 attempts and tied for fifth in the MWC...Recorded a .972 fielding percentage with 64 putouts and six assists...Led the team and ranked fourth in the MWC during conference action with a .431 batting average...Recorded a .431 slugging percentage during conference play and ranked ninth in the MWC during conference play with a .463 on-base percentage...Recorded a career-high three hits against Cleveland State (Feb. 7), New Mexico (April 19) and UNLV (April 24)...Notched 11 two-hit and three three-hit performances.

## Westview

Played softball for the Westview Wildcats in Portland, Ore., under coach Ronda McKenzie...Varsity letterwinner all four years in both softball and soccer...Player of the Year for the Metro League in 2007...Named second-team all-league in 2006...Named first-team all-league in 2005, 2007 and 2008...Garnered second-team all-state in 2005 and 2008...Named first-team all-state in 2007...Named team MVP in 2007...Team was 2007 Metro League champ...Participated in the state semifinals in 2006, 2007 and 2008...Played club softball for the Washington Bulldogs Gold.

## Personal

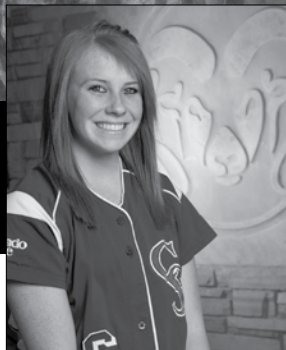
Full name is Jenna Lynne Krogh...Born on Sept. 28, 1989, in Portland, Ore. ...Daughter of John and Cindy Krogh...Has one older sister, Danielle...Nickname is J-Bone...Favorite food is Chipotle...Favorite athlete is Albert Pujols...Majoring in apparel and merchandising.

## Krogh's Career Statistics

| Year  | Avg  | GP-GS | AB  | R  | H  | 2B | 3B | HR | RBI | TB | SLG% | BB | HBP | SO | GDP | OB%  | SF | SH | SB | ATT | PO | A | E | FLD% |
|-------|------|-------|-----|----|----|----|----|----|-----|----|------|----|-----|----|-----|------|----|----|----|-----|----|---|---|------|
| 2009  | .338 | 50-50 | 157 | 29 | 53 | 1  | 1  | 0  | 9   | 56 | .357 | 13 | 1   | 25 | 0   | .392 | 0  | 5  | 9  | 12  | 64 | 6 | 2 | .972 |
| TOTAL | .338 | 50-50 | 157 | 29 | 53 | 1  | 1  | 0  | 9   | 56 | .357 | 13 | 1   | 25 | 0   | .392 | 0  | 5  | 9  | 12  | 64 | 6 | 2 | .972 |



## Student-Athlete Profiles



6

## ASHLEY MacQUEEN

SOPHOMORE | INFIELD  
WINDSOR, COLO. (ESPERANZA HS)

## 2009

Played in 43 games during her freshman campaign, starting

34...Finished the season with a .167 batting average with a double and three RBI...Scored 12 runs and recorded one stolen base...Tallied a .940 fielding percentage with 39 putouts and 70 assists...Recorded a .143 batting average during MWC action with four hits...Finished conference action 1-1 in stolen-base attempts...Recorded a career-high two RBI against Ohio (Feb. 6).

## Esperanza

Played softball for the Esperanza Aztecs in Anaheim, Calif. ...Earned two varsity letters in softball, her junior and senior years...Named Defensive Player of the Year in 2005 and 2007...Member of the Sunset League championship team in 2007...Played with current CSU softball player Christine Thomsen on the SoCal Jets Gold club team.

## Personal

Full name is Ashley MacQueen...Born on April 14, 1990, in Orange County, Calif. ...Daughter of Jim and Gina MacQueen...Has one brother, John...Nickname is A-Mac...Favorite food is tacos...Favorite athlete is Derek Jeter...Majoring in human development and family studies.

## MacQueen's Career Statistics

| Year  | Avg  | GP-GS | AB | R  | H  | 2B | 3B | HR | RBI | TB | SLG% | BB | HBP | SO | GDP | OB%  | SF | SH | SB | ATT | PO | A  | E | FLD% |
|-------|------|-------|----|----|----|----|----|----|-----|----|------|----|-----|----|-----|------|----|----|----|-----|----|----|---|------|
| 2009  | .167 | 43-34 | 84 | 12 | 14 | 1  | 0  | 0  | 3   | 15 | .179 | 3  | 0   | 15 | 1   | .195 | 0  | 3  | 1  | 1   | 39 | 70 | 7 | .940 |
| TOTAL | .167 | 43-34 | 84 | 12 | 14 | 1  | 0  | 0  | 3   | 15 | .179 | 3  | 0   | 15 | 1   | .195 | 0  | 3  | 1  | 1   | 39 | 70 | 7 | .940 |



22

## LYSSA ROBERTS

SOPHOMORE | INFIELD  
PARKER, COLO. (DOUGLAS COUNTY HS)

## 2009

Played in 36 games, starting 22, in her freshman cam-

paign...Hit .179 with three RBI and three runs scored...Recorded a .179 slugging percentage and a .258 on-base percentage...Recorded a .908 fielding percentage with 43 putouts and 36 assists...Recorded a career-high two hits against Sacramento State (March 19) and two RBI against Dartmouth (March 19)...Named MWC academic all-conference with a 3.51 GPA.

## Douglas County

Played softball, basketball and golf for the Douglas County Huskies in Castle Rock, Colo., under coach Brian Stebbins...Earned four varsity letters in softball, basketball and golf...Garnered first-team all-conference in 2004, 2005 and 2007, and second-team all-conference in 2006 for softball...Earned honorable-mention all-conference in 2006 and second-team all-conference in 2007 and 2008 in golf...Notched honorable-mention all-state in 2004, 2005 and 2006 in golf...Named to the 5A all-state softball team in 2007...Named team MVP in 2006...Holds school records in career batting average (.491), runs scored (92) and career hits (140)...Was the first person in school's history to be a four-year letter-winner in three sports...Named Female Athlete of the

Year in 2008...Named a Rocky Mountain News Steinmark Finalist...Was a softball captain in 2005, 2006 and 2007, and a basketball captain in 2007 and 2008...Played club softball for the DC Jets, Colorado Legend, Pony Express and Colorado Thunder.

## Personal

Full name is Lyssa Renee Roberts...Born on Aug. 22, 1989, in Parker, Colo. ...Daughter of Mark and Linda Roberts...Father, Mark, is an assistant softball coach at the University of Northern Colorado...Has two sisters, Mackenzie and Stephanie...Sister, Stephanie, played softball at CSU...Nickname is Twos...Favorite food is Chipotle...Favorite athlete is Chauncey Billups...Majoring in human development and family studies.

## Roberts's Career Statistics

| Year  | Avg  | GP-GS | AB | R | H  | 2B | 3B | HR | RBI | TB | SLG% | BB | HBP | SO | GDP | OB%  | SF | SH | SB | ATT | PO | A  | E | FLD% |
|-------|------|-------|----|---|----|----|----|----|-----|----|------|----|-----|----|-----|------|----|----|----|-----|----|----|---|------|
| 2009  | .179 | 36-22 | 56 | 3 | 10 | 0  | 0  | 0  | 3   | 10 | .179 | 3  | 3   | 13 | 0   | .258 | 0  | 2  | 0  | 2   | 43 | 36 | 8 | .908 |
| TOTAL | .179 | 36-22 | 56 | 3 | 10 | 0  | 0  | 0  | 3   | 10 | .179 | 3  | 3   | 13 | 0   | .258 | 0  | 2  | 0  | 2   | 43 | 36 | 8 | .908 |



## Student-Athlete Profiles



17

## AMILIA STEPHENS

SOPHOMORE | CATCHER  
ARVADA, COLO. (FAITH CHRISTIAN HS)

## 2009

Played in 18 games during her freshman season at Colorado State...scored seven runs as a pinch runner.

## Faith Christian

Played softball for the Faith Christian Eagles in Arvada, Colo., under coach Tim Griego...Earned four varsity letters in softball...Named to the all-conference team twice and garnered honorable-mention all-conference...Earned honorable-mention all-state in 2006...Named to the 3A all-state softball team in 2007...Team was conference champion in 2007...Was team captain in 2007...Played club softball for the Colorado Comets.

## Personal

Full name is Amilia Rose Stephens...Born on June 3, 1990, in Littleton, Colo. ...Daughter of Aaron and Madeline Stephens...Has one brother, Aaron Jr....Nickname is Meals...Favorite food is watermelon...Favorite athlete is Troy Tulowitzki...Majoring in health and exercise science.



13

## CHRISTINE THOMSEN

SOPHOMORE | INFIELD  
FRESNO, CALIF. (BULLARD HS)

## 2009

Played in 49 games during her freshman campaign,

starting 47...Ranked second on the team and sixth in the conference with a .368 batting average...Tied for eighth in the conference with 53 hits...Recorded five doubles, two triples and one home run while tallying 32 RBI and scoring 22 runs...Hit .412 with runners in scoring position and tallied 10 two-out RBI...Notched a .451 slugging percentage and a .414 on-base percentage...Finished the season 3-for-5 in stolen-base attempts...Recorded a .994 fielding percentage with 329 putouts and 12 assists while only surrendering two errors...Ranked sixth with a .409 batting average during MWC action...Recorded two doubles and one triple during conference play while tallying 10 RBI...Recorded a career-high four RBI against Dartmouth (March 19) and San Diego State (April 25)...Recorded a career-high four hits against Northern Colorado (April 14)...Finished the season with 11 two-hit games, four three-hit games and one four-hit performance.

## Bullard

Played softball and basketball for the Bullard Knights in Fresno, Calif., under coach Jamie Maxey...Earned four varsity letters in softball...Named second-team all-conference in 2005...Named first-team all-conference in 2006 and 2007...Earned league MVP honors in 2007 and Bullard MVP honors in 2008...Team was conference champion in 2005, 2006, 2007 and 2008...Holds school records in career hits, career home runs, career doubles, career RBI and career batting average (.455)...Played club softball for the SoCal Jets.

## Personal

Full name is Christine Melissa Thomsen...Born on Feb. 13, 1990, in Fresno, Calif. ...Daughter of Keith and Cathy Thomsen...Has one brother, Alex, and one sister, Susanne...Sister plays softball at Menlo College...Nickname is Boosties...Favorite food is tacos...Favorite athlete is Johnny Damon...Undecided major.

## Stephens's Career Statistics

| Year  | Avg  | GP-GS | AB | R | H | 2B | 3B | HR | RBI | TB | SLG% | BB | HBP | SO | GDP | OB%  | SF | SH | SB | ATT | PO | A | E | FLD% |
|-------|------|-------|----|---|---|----|----|----|-----|----|------|----|-----|----|-----|------|----|----|----|-----|----|---|---|------|
| 2009  | .000 | 18-0  | 2  | 7 | 0 | 0  | 0  | 0  | 0   | 0  | .000 | 0  | 0   | 1  | 0   | .000 | 0  | 0  | 0  | 0   | 0  | 0 | 1 | .000 |
| TOTAL | .000 | 18-0  | 2  | 7 | 0 | 0  | 0  | 0  | 0   | 0  | .000 | 0  | 0   | 1  | 0   | .000 | 0  | 0  | 0  | 0   | 0  | 0 | 1 | .000 |

## Thomsen's Career Statistics

| Year  | Avg  | GP-GS | AB  | R  | H  | 2B | 3B | HR | RBI | TB | SLG% | BB | HBP | SO | GDP | OB%  | SF | SH | SB | ATT | PO  | A  | E | FLD% |
|-------|------|-------|-----|----|----|----|----|----|-----|----|------|----|-----|----|-----|------|----|----|----|-----|-----|----|---|------|
| 2009  | .368 | 49-47 | 144 | 22 | 53 | 5  | 2  | 1  | 32  | 65 | .451 | 13 | 1   | 12 | 0   | .414 | 4  | 4  | 3  | 5   | 329 | 12 | 2 | .994 |
| TOTAL | .368 | 49-47 | 144 | 22 | 53 | 5  | 2  | 1  | 32  | 65 | .451 | 13 | 1   | 12 | 0   | .414 | 4  | 4  | 3  | 5   | 329 | 12 | 2 | .994 |



## Student-Athlete Profiles



4

## HAYLEY BOLYARD

FRESHMAN | CATCHER  
LAFAYETTE, COLO. (PEAK TO PEAK HS)

**Peak to Peak**

Played softball for the Peak to Peak Pumas under head coach Katie Fordham... Varsity captain in 2007, 2008 and 2009...Named to the all-conference team in 2008...Earned second-team all-conference in 2009...Team was conference champions in 2007, 2008 and 2009...Holds school record in every softball category...Played club softball for the Colorado Stars.

**Personal**

Full name is Hayley Bolyard...Born March 20, 1991 in Frederick, Md. ...Daughter of Karen Bolyard...Has two sisters, Lindsay and Jo...Nickname is Hayles...Favorite food is Chinese...Favorite athlete is Crystl Bustos...Undecided major.



9

## BRIANNA DONAHUE

FRESHMAN | OUTFIELD  
WESTMINSTER, COLO. (RALSTON VALLEY HS)

**Ralston Valley**

Was a two-sport athlete for the Ralston Valley Mustangs in Arvada, Colo. ...Played softball under head coach Wendy Davies...Earned three varsity softball letters and four varsity track letters...Team was 2007 Colorado state champion...Named to the all-Colorado team and all-conference team in 2007 and 2008...Earned all-conference honors all four years in track and field...Named academic all-state in 2007 and 2008...Played club softball for the Colorado Styxx and Colorado Comets.

**Personal**

Full name is Brianna Mae Donahue...Born on April 20, 1991, in Aurora, Colo. ...Daughter of Joseph and LuAnn Donahue...Has one older sister, Nichole...Nickname is Bri...Favorite food is ravioli...Favorite athlete is Brandon Marshall...Majoring in human development and family studies.



10

## KELLI GRO Y

FRESHMAN | INFIELD  
LAKEWOOD, COLO. (GREEN MOUNTAIN HS)

**Green Mountain**

Was a three-sport athlete for the Green Mountain Rams in Lakewood, Colo. ...Played softball under Vince Schade for three seasons and Danny Abrams for one season...Earned three varsity letters in soccer and two in softball...Earned honorable mention all-conference honors in 2007 and 2008...Named team Defensive Player of the Year in 2008...Won the Coach's Choice Award...Varsity softball captain in 2008...Garnered academic all-state honors...Played high school softball with current Colorado State teammate Chelsea Freiberg and

**Personal**

Full name is Kelli Christine Groy...Born on April 15, 1991 in Littleton, Colo. ...Daughter of Cindy and David Groy...Has one older sister, Katie...Nickname is Kell-Bell...Favorite foods are seafood and Italian...Favorite athlete is Todd Helton...Undecided major.

played against current Colorado State teammates Brianna Donahue and Kelsey Jo O'Brien...Played club softball for the Lakewood Bulldogs.



Student-Athlete Profiles



5  
KELSEY JO O'BRIEN

FRESHMAN | PITCHER  
LITTLETON, COLO. (COLUMBINE HS)

record for career strikeouts (844)...Named varsity captain in 2008...Played against current Colorado State players Caitlan Stem, Dani Chaplin, Bri Donahue and Lyssa Roberts in high school...Played club softball for the Colorado Stampede.

**Columbine**  
Was a two-sport athlete for the Columbine Rebels in Littleton, Colo. ...Played softball under coaches Jeff Markle and Robin Ortiz...Varsity letterwinner all four years in softball...Named Jefferson County League MVP in 2006 and Columbine High School MVP in 2006, 2007 and 2008...Earned a spot on the all-Colorado team in 2006, 2007 and 2008...Named first-team all-conference in 2006, 2007 and 2008...Holds school record for season strikeouts (300), perfect games in a season (2) and shutouts in a season (14)...Holds school

**Personal**  
Full name is Kelsey Jo O'Brien...Born on Jan. 20, 1991, in Aurora, Colo. ...Daughter of John and Kris O'Brien...Has one older brother, Josh...Nickname is K.J....Favorite food is lasagna...Favorite athlete is Lance Armstrong...Majoring in business administration.



18  
BRITTANY PALISH

FRESHMAN | CATCHER  
WOODCLIFF LAKE, N.J. (PASCACK HILLS HS)

**Pascack Hills**  
Was a three-sport athlete for the Pascack Hills Cowboys in Montvale, N.J. ... Played softball under head coaches Scott Ernest and Erin Mills...Earned four varsity letters in tennis, two in basketball and four in softball...Named to the first-team all-league team three times in softball and tennis...Earned first-team all-county honors three times in softball and once in tennis...Named varsity tennis captain in 2008 and varsity softball captain in 2009...Played club softball for the New Jersey Pride.

**Personal**  
Full name is Brittany Nicole Palish...Born on Oct, 13, 1990, in New York, N.Y. ... Daughter of Linda and Jeff Palish... Has one older brother, Jared...Nickname is B-Pal...Favorite food is grilled cheese...Favorite athlete is Billie Jean King...Majoring in health and exercise science.

Roster Breakdown

Roster Breakdown

**By State**  
**Colorado (13):**  
..... Ivory Allen  
..... Hayley Bolyard  
..... Danielle Chaplin  
..... Brianna Donahue  
..... Chelsea Freiberg  
..... Kelli Groy  
..... Kayla Kreutzman  
..... Ashley MacQueen  
..... Kelsey Jo O'Brien  
..... Lyssa Roberts  
..... Caitlan Stem  
..... Amilia Stephens  
..... Sarah Sullivan

**California (4):**  
..... Allison Majam  
..... Ashley Munoz  
..... Rebecca Penland  
..... Christine Thomsen  
  
**Oregon (2):**  
..... Kelli Eubanks  
..... Jenna Krogh  
  
**Washington (1):**  
..... Robyn Mask  
  
**New Jersey (1):**  
..... Brittany Palish

**By Position**  
**Pitchers (4):**  
..... Danielle Chaplin  
..... Kelli Eubanks  
..... Kelsey Jo O'Brien  
..... Rebecca Penland  
  
**Catchers (4):**  
..... Hayley Bolyard  
..... Ashley Munoz  
..... Brittany Palish  
..... Amilia Stephens

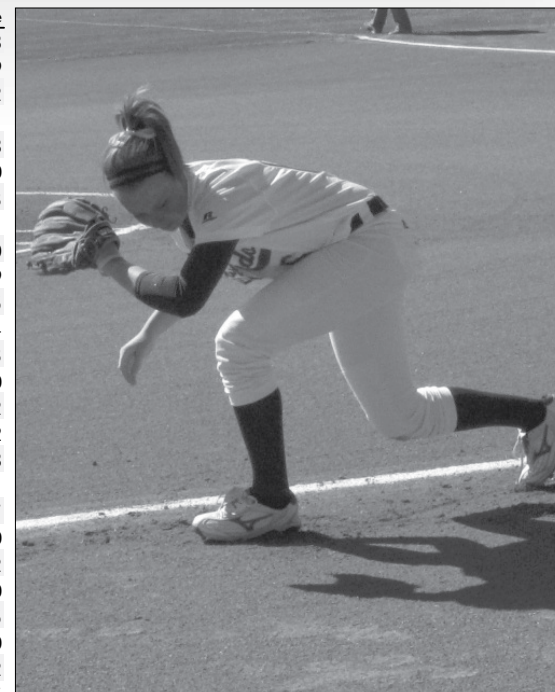
**Infielders (8):**  
..... Chelsea Freiberg  
..... Kelli Groy  
..... Ashley MacQueen  
..... Allison Majam  
..... Robyn Mask  
..... Lyssa Roberts  
..... Caitlan Stem  
..... Christine Thomsen  
  
**Outfielders (5):**  
..... Ivory Allen  
..... Brianna Donahue  
..... Kayla Kreutzman  
..... Jenna Krogh  
..... Sarah Sullivan

## 2009 Results

| Date            | Opponent                | Score   | Inns | Overall | MWC   | Pitcher of record     | Attend | Time |
|-----------------|-------------------------|---------|------|---------|-------|-----------------------|--------|------|
| 02/05/09        | at New Mexico St.       | L 1-9   | 5    | 0-1-0   | 0-0-0 | PENLAND, Reb (L 0-1)  | 317    | 1:38 |
| 02/06/09        | vs Missouri-Kansas City | w 6-5   | 7    | 1-1-0   | 0-0-0 | KLABOUGH, Ki (W 1-0)  | 0      | 2:09 |
| 02/06/09        | vs Univ. of Ohio        | w 13-11 | 7    | 2-1-0   | 0-0-0 | EUBANKS, Kel (W 1-0)  | 0      | 2:22 |
| 02/07/09        | vs Cleveland State      | w 12-11 | 7    | 3-1-0   | 0-0-0 | PENLAND, Reb (W 1-1)  | 0      | 2:21 |
| 02/07/09        | at New Mexico St.       | L 0-8   | 5    | 3-2-0   | 0-0-0 | KLABOUGH, Ki (L 1-1)  | 0      | 1:58 |
| 02/08/09        | vs Ohio State           | L 2-11  | 6    | 3-3-0   | 0-0-0 | PENLAND, Reb (L 1-2)  | 0      | 2:10 |
| 02/13/09        | vs Tulsa                | L 1-4   | (8)  | 3-4-0   | 0-0-0 | EUBANKS, Kel (L 1-1)  | 79     | 1:53 |
| 02/14/2009      | vs SAN DIEGO            | w 2-0   | 7    | 4-4-0   | 0-0-0 | EUBANKS, Kel (W 2-1)  | 47     | 1:41 |
| 02/13/2009      | at UC Riverside         | w 6-2   | 7    | 5-4-0   | 0-0-0 | CHAPLIN, Dan (W 1-0)  | 86     | 20:0 |
| 02/15/2009      | vs Tulsa                | L 0-6   | 7    | 5-5-0   | 0-0-0 | PENLAND, Reb (L 1-3)  | 79     | 1:39 |
| Feb 20, 2009    | vs Long Beach State     | w 1-0   | 7    | 6-5-0   | 0-0-0 | EUBANKS, Kel (W)      | 117    | 1:35 |
| Feb 20, 2009    | at SAN DIEGO            | w 4-2   | 7    | 7-5-0   | 0-0-0 | CHAPLIN, Dan (W)      | 153    | 1:24 |
| Feb 21, 2009    | vs Univ. of San Diego   | w 9-1   | 5    | 8-5-0   | 0-0-0 | KLABOUGH, Ki (W)      | 0      | 1:13 |
| Feb 21, 2009    | vs Boise State Broncos  | w 3-2   | 7    | 9-5-0   | 0-0-0 | CHAPLIN, Dan (W)      | 0      | 2:00 |
| Feb 22, 2009    | vs Long Beach State     | L 1-4   | 7    | 9-6-0   | 0-0-0 | CHAPLIN, Dan (L)      | 0      | 2:12 |
| Feb 27, 2009    | at Univ. of San Diego   | L 1-3   | 7    | 9-7-0   | 0-0-0 | PENLAND, Reb (L)      | 0      | 1:42 |
| \$ Feb 27, 2009 | vs #3 UCLA              | L 0-4   | 7    | 9-8-0   | 0-0-0 | CHAPLIN, Dan (L 2-2)  | 155    | 2:18 |
| Feb 28, 2009    | vs Santa Clara          | w 10-1  | 5    | 10-8-0  | 0-0-0 | CHAPLIN, Dan (W)      | 102    | 1:41 |
| Feb 28, 2009    | vs Oregon               | w 1-0   | 7    | 11-8-0  | 0-0-0 | EUBANKS, Kel (W)      | 143    | 1:27 |
| Mar 01, 2009    | vs UC Davis             | w 3-0   | 7    | 12-8-0  | 0-0-0 | EUBANKS, Kel (W)      | 126    | 1:40 |
| Mar 13, 2009    | at San Jose State       | L 0-3   | 7    | 12-9-0  | 0-0-0 | EUBANKS, Kel (L 5-2)  | 115    | 1:52 |
| Mar 13, 2009    | vs Vermont              | w 7-0   | 7    | 13-9-0  | 0-0-0 | KLABOUGH, Ki (W 3-1)  | 200    | 1:50 |
| Mar 14, 2009    | vs Sacramento State     | L 2-7   | 7    | 13-10-0 | 0-0-0 | CHAPLIN, Dan (L 4-3)  | 122    | 1:55 |
| Mar 14, 2009    | vs UC Davis             | L 2-4   | 7    | 13-11-0 | 0-0-0 | EUBANKS, Kel (L 5-3)  | 134    | 2:20 |
| Mar 15, 2009    | vs Vermont              | L 2-3   | 7    | 13-12-0 | 0-0-0 | PENLAND, Reb (L 1-5)  | 122    | 1:52 |
| Mar 17, 2009    | at Pacific              | L 2-3   | 7    | 13-13-0 | 0-0-0 | EUBANKS, Kel (L 5-4)  | 322    | 1:55 |
| Mar 17, 2009    | at Pacific              | L 2-7   | 7    | 13-14-0 | 0-0-0 | CHAPLIN, Dan (L 4-4)  | 335    | 1:52 |
| Mar 18, 2009    | at Nevada               | L 1-2   | 7    | 13-15-0 | 0-0-0 | EUBANKS, Kel (L 5-5)  | 305    | 1:54 |
| Mar 19, 2009    | vs Dartmouth            | w 8-0   | 5    | 14-15-0 | 0-0-0 | CHAPLIN, Dan (W 5-4)  | 0      |      |
| @ Mar 19, 2009  | at Sacramento State     | L 7-8   | (8)  | 14-16-0 | 0-0-0 | CHAPLIN, Dan (L 4-5)  | 163    | 2:25 |
| Mar 20, 2009    | vs Dartmouth            | w 6-1   | 7    | 15-16-0 | 0-0-0 | KLABOUGH, Ki (W 4-1)  | 112    | 1:35 |
| Mar 21, 2009    | vs Cal                  | w 2-1   | 7    | 16-16-0 | 0-0-0 | EUBANKS, Kel (W 6-5)  | 175    | 1:58 |
| Mar 22, 2009    | vs Cal Poly             | L 1-2   | 7    | 16-17-0 | 0-0-0 | EUBANKS, Kel (L 5-6)  | 113    | 1:52 |
| * Apr 02, 2009  | BYU                     | L 0-11  | 5    | 16-18-0 | 0-1-0 | EUBANKS, Kel (L 6-7)  | 137    | 1:32 |
| * Apr 03, 2009  | UTAH                    | w 8-5   | 7    | 17-18-0 | 1-1-0 | EUBANKS, Kel (W 7-7)  | 154    | 2:28 |
| * 04-10-09      | at San Diego State      | L 0-5   | 7    | 17-19-0 | 1-2-0 | EUBANKS, Kel (L 7-8)  | 424    | 1:53 |
| * 04-11-09      | at UNLV                 | w 4-1   | 7    | 18-19-0 | 2-2-0 | CHAPLIN, Dan (W 5-6)  | 236    | 2:10 |
| * 04-12-09      | at UNLV                 | L 4-12  | 6    | 18-20-0 | 2-3-0 | PENLAND, Reb (L 1-5)  | 186    | 2:20 |
| Apr 14, 2009    | NORTHERN COLORADO       | w 10-9  | (9)  | 19-20-0 | 2-3-0 | KLABOUGH, Ki (W 5-1)  | 185    | 2:55 |
| * Apr 19, 2009  | NEW MEXICO              | w 2-1   | 7    | 20-20-0 | 3-3-0 | EUBANKS, Kel (W 8-8)  | 194    | 1:35 |
| * Apr 19, 2009  | NEW MEXICO              | w 4-3   | (9)  | 21-20-0 | 4-3-0 | KLABOUGH, Ki (W 6-1)  | 217    | 2:15 |
| * Apr 24, 2009  | UNLV                    | L 6-7   | 7    | 21-21-0 | 4-4-0 | EUBANKS, Kel (L 8-9)  | 152    | 2:40 |
| * Apr 25, 2009  | SAN DIEGO STATE         | L 5-11  | 7    | 21-22-0 | 4-5-0 | KLABOUGH, Ki (L 6-2)  | 138    | 2:33 |
| * Apr 26, 2009  | SAN DIEGO STATE         | w 7-4   | 7    | 22-22-0 | 5-5-0 | EUBANKS, Kel (W 9-9)  | 211    | 2:11 |
| Apr 28, 2009    | at Northern Colorado    | w 3-0   | 7    | 23-22-0 | 5-5-0 | EUBANKS, Kel (W)      | 94     | 2:05 |
| Apr 28, 2009    | at Northern Colorado    | w 10-4  | 7    | 24-22-0 | 5-5-0 | KLABOUGH, Ki (W)      | 98     | 2:09 |
| * May 02, 2009  | at New Mexico           | L 4-6   | 7    | 24-23-0 | 5-6-0 | EUBANKS, Kel (L 10-1) | 1066   | 3:05 |
| * May 07, 2009  | vs Utah                 | L 3-12  | 7    | 24-24-0 | 5-7-0 | CHAPLIN, Dan (L 6-6)  | 156    | 4:22 |
| * May 07, 2009  | at Utah                 | w 5-3   | 7    | 25-24-0 | 6-7-0 | CHAPLIN, Dan (W 7-6)  | 168    | 2:10 |
| * May 08, 2009  | at BYU                  | L 1-4   | 7    | 25-25-0 | 6-8-0 | EUBANKS, Kel (L 10-1) | 321    | 2:22 |
| * May 09, 2009  | at BYU                  | w 7-5   | 7    | 26-25-0 | 7-8-0 | KLABOUGH, Ki (W 8-2)  | 402    | 2:24 |

\* = Conference game

() extra inning game



Ashley MacQueen



Brittany Palish



2009 Statistics

2009 Overall Statistics

Record: 26-25 Home: 5-3 Away: 7-12 Neutral: 14-10 MWC: 7-8

| Player              | avg  | gp-gs | ab   | r   | h   | 2b | 3b | hr | rbi | tb  | slg% | bb  | hp | so  | gdp | ob%  | sf | sh | sb-att | po   | a   | e  | fld%  |
|---------------------|------|-------|------|-----|-----|----|----|----|-----|-----|------|-----|----|-----|-----|------|----|----|--------|------|-----|----|-------|
| 23 STEM, Caitlan    | .372 | 51-51 | 172  | 44  | 64  | 11 | 3  | 6  | 26  | 99  | .576 | 19  | 2  | 17  | 0   | .440 | 0  | 2  | 7-8    | 64   | 121 | 18 | .911  |
| 13 THOMSEN, Christ  | .368 | 49-47 | 144  | 22  | 53  | 5  | 2  | 1  | 32  | 65  | .451 | 13  | 1  | 12  | 0   | .414 | 4  | 4  | 3-5    | 329  | 12  | 2  | .994  |
| 16 MAJAM, Allison   | .341 | 42-41 | 129  | 18  | 44  | 12 | 1  | 2  | 25  | 64  | .496 | 8   | 1  | 9   | 0   | .384 | 0  | 3  | 2-3    | 42   | 13  | 6  | .902  |
| 2 KROGH, Jenna      | .338 | 50-50 | 157  | 29  | 53  | 1  | 1  | 0  | 9   | 56  | .357 | 13  | 1  | 25  | 0   | .392 | 0  | 5  | 9-12   | 64   | 6   | 2  | .972  |
| 5 CAUSGROVE, Sha    | .289 | 41-27 | 83   | 10  | 24  | 6  | 1  | 2  | 18  | 38  | .458 | 18  | 2  | 19  | 0   | .419 | 2  | 0  | 2-2    | 111  | 7   | 1  | .992  |
| 14 PENLAND, Rebec   | .274 | 45-41 | 124  | 10  | 34  | 6  | 0  | 1  | 15  | 43  | .347 | 7   | 1  | 12  | 1   | .316 | 1  | 4  | 0-0    | 54   | 3   | 0  | 1.000 |
| 33 MUNOZ, Ashley    | .272 | 51-42 | 125  | 16  | 34  | 3  | 0  | 4  | 25  | 49  | .392 | 16  | 3  | 20  | 0   | .368 | 0  | 4  | 0-0    | 138  | 11  | 4  | .974  |
| 11 ALLEN, Ivory     | .208 | 16-13 | 24   | 4   | 5   | 0  | 0  | 0  | 0   | 5   | .208 | 5   | 0  | 7   | 0   | .345 | 0  | 1  | 1-1    | 11   | 0   | 0  | 1.000 |
| 20 SULLIVAN, Sarah  | .204 | 30-18 | 54   | 6   | 11  | 1  | 0  | 0  | 0   | 12  | .222 | 3   | 1  | 17  | 0   | .259 | 0  | 0  | 0-0    | 29   | 0   | 0  | 1.000 |
| 10 KLABOUGH, Kim    | .194 | 20-9  | 31   | 2   | 6   | 0  | 0  | 1  | 6   | 9   | .290 | 2   | 0  | 11  | 0   | .242 | 0  | 0  | 0-0    | 3    | 17  | 1  | .952  |
| 3 MASK, Robyn       | .188 | 42-36 | 85   | 11  | 16  | 5  | 0  | 0  | 10  | 21  | .247 | 9   | 0  | 21  | 1   | .266 | 0  | 6  | 3-3    | 44   | 70  | 8  | .934  |
| 22 ROBERTS, Lyssa   | .179 | 36-22 | 56   | 3   | 10  | 0  | 0  | 0  | 3   | 10  | .179 | 3   | 3  | 13  | 0   | .258 | 0  | 2  | 0-2    | 43   | 36  | 8  | .908  |
| 6 MACQUEEN, Ashl    | .167 | 43-34 | 84   | 12  | 14  | 1  | 0  | 0  | 3   | 15  | .179 | 3   | 0  | 15  | 1   | .195 | 0  | 3  | 1-1    | 39   | 70  | 7  | .940  |
| 8 KREUTZMAN, Kay    | .163 | 40-32 | 80   | 6   | 13  | 2  | 1  | 0  | 8   | 17  | .213 | 6   | 1  | 13  | 0   | .227 | 1  | 4  | 0-0    | 24   | 2   | 0  | 1.000 |
| 9 REYNOLDS, Miche   | .000 | 9-4   | 8    | 1   | 0   | 0  | 0  | 0  | 0   | 0   | .000 | 1   | 0  | 7   | 0   | .111 | 0  | 0  | 0-0    | 3    | 3   | 1  | .857  |
| 17 STEPHENS, Amili  | .000 | 18-0  | 2    | 7   | 0   | 0  | 0  | 0  | 0   | 0   | .000 | 0   | 0  | 1   | 0   | .000 | 0  | 0  | 0-0    | 0    | 0   | 1  | .000  |
| 12 CHAPLIN, Daniell | .000 | 1-1   | 0    | 0   | 0   | 0  | 0  | 0  | 0   | 0   | .000 | 0   | 0  | 0   | 0   | .000 | 0  | 0  | 0-0    | 1    | 31  | 2  | .941  |
| Totals              | .281 | 51    | 1358 | 201 | 381 | 53 | 9  | 17 | 180 | 503 | .370 | 126 | 16 | 219 | 3   | .347 | 8  | 38 | 28-37  | 1007 | 439 | 63 | .958  |
| Opponents           | .286 | 51    | 1382 | 228 | 395 | 63 | 8  | 30 | 200 | 564 | .408 | 94  | 19 | 232 | 0   | .338 | 8  | 41 | 46-54  | 1012 | 425 | 65 | .957  |

LOB - Team (336), Opp (310). DP's turned - Team (13), Opp (11). CI - Team (0), Opp (2). IBB - Team (1), STEM, Caitla 1, Opp (3). Picked off - ROBERTS, Lys 1.

(All games Sorted by Earned run avg)

| Player              | era  | w-l   | app | gs | cg | sho | sv | ip    | h   | r   | er  | bb  | so  | 2b | 3b | hr | b/avg | wp | hp | bk | sfa | sha |
|---------------------|------|-------|-----|----|----|-----|----|-------|-----|-----|-----|-----|-----|----|----|----|-------|----|----|----|-----|-----|
| 10 KLABOUGH, Kim    | 2.85 | 8-2   | 17  | 6  | 3  | 1/0 | 0  | 61.1  | 78  | 37  | 25  | 5   | 34  | 11 | 2  | 5  | .306  | 2  | 3  | 0  | 2   | 9   |
| 15 EUBANKS, Kelli   | 3.09 | 10-11 | 34  | 23 | 13 | 5/0 | 1  | 167.2 | 180 | 93  | 74  | 46  | 131 | 30 | 2  | 15 | .270  | 9  | 8  | 1  | 5   | 21  |
| 12 CHAPLIN, Daniell | 4.41 | 7-6   | 23  | 18 | 5  | 1/0 | 0  | 79.1  | 92  | 64  | 50  | 33  | 47  | 10 | 4  | 4  | .277  | 9  | 3  | 2  | 0   | 9   |
| 14 PENLAND, Rebec   | 6.40 | 1-6   | 13  | 4  | 1  | 0/0 | 2  | 27.1  | 45  | 34  | 25  | 10  | 20  | 12 | 0  | 6  | .352  | 4  | 5  | 3  | 1   | 2   |
| Totals              | 3.63 | 26-25 | 51  | 51 | 22 | 7/0 | 3  | 335.2 | 395 | 228 | 174 | 94  | 232 | 63 | 8  | 30 | .286  | 24 | 19 | 6  | 8   | 41  |
| Opponents           | 3.20 | 25-26 | 51  | 51 | 22 | 6/2 | 1  | 337.1 | 381 | 201 | 154 | 126 | 219 | 53 | 9  | 17 | .281  | 28 | 16 | 1  | 8   | 38  |

PB - Team (3), MUNOZ, Ashle 2, CAUSGROVE, S 1, Opp (8). Pickoffs - Team (0), Opp (1). SBA/ATT - EUBANKS, Kel (27-32), MUNOZ, Ashle (26-29), CAUSGROVE, S (20-25), CHAPLIN, Dan (7-8), PENLAND, Reb (7-8), KLABOUGH, Ki (5-6).



Ivory Allen



From left: Sarah Sullivan, Hayley Bolyard, Danielle Chaplin, Ashley MacQueen, Brianna Donahue and Head Coach Mary Yori

2009 Conference Statistics

Record: 7-8 Home: 4-3 Away: 3-4 Neutral: 0-1 MWC: 7-8

| Player              | avg  | gp-gs | ab  | r  | h   | 2b | 3b | hr | rbi | tb  | slg% | bb | hp | so | gdp | ob%  | sf | sh | sb-att | po  | a   | e  | fld%  |
|---------------------|------|-------|-----|----|-----|----|----|----|-----|-----|------|----|----|----|-----|------|----|----|--------|-----|-----|----|-------|
| 2 KROGH, Jenna      | .431 | 15-15 | 51  | 8  | 22  | 0  | 0  | 0  | 3   | 22  | .431 | 2  | 1  | 7  | 0   | .463 | 0  | 2  | 2-2    | 15  | 1   | 0  | 1.000 |
| 13 THOMSEN, Christ  | .409 | 15-13 | 44  | 8  | 18  | 2  | 1  | 0  | 10  | 22  | .500 | 4  | 1  | 3  | 0   | .460 | 1  | 1  | 0-0    | 87  | 3   | 0  | 1.000 |
| 23 STEM, Caitlan    | .377 | 15-15 | 53  | 15 | 20  | 2  | 1  | 3  | 8   | 33  | .623 | 6  | 0  | 9  | 0   | .441 | 0  | 0  | 1-1    | 25  | 28  | 5  | .914  |
| 16 MAJAM, Allison   | .333 | 15-15 | 48  | 7  | 16  | 5  | 0  | 2  | 10  | 27  | .563 | 4  | 1  | 4  | 0   | .396 | 0  | 1  | 0-1    | 19  | 8   | 3  | .900  |
| 5 CAUSGROVE, Sha    | .286 | 14-13 | 35  | 5  | 10  | 1  | 0  | 2  | 8   | 17  | .486 | 11 | 0  | 6  | 0   | .457 | 0  | 0  | 0-0    | 67  | 7   | 0  | 1.000 |
| 14 PENLAND, Rebec   | .262 | 14-13 | 42  | 5  | 11  | 2  | 0  | 1  | 9   | 16  | .381 | 2  | 1  | 4  | 0   | .311 | 0  | 0  | 0-0    | 17  | 0   | 0  | 1.000 |
| 20 SULLIVAN, Sarah  | .250 | 10-5  | 16  | 2  | 4   | 1  | 0  | 0  | 0   | 5   | .313 | 1  | 1  | 5  | 0   | .333 | 0  | 0  | 0-0    | 10  | 0   | 0  | 1.000 |
| 33 MUNOZ, Ashley    | .233 | 15-9  | 30  | 2  | 7   | 0  | 0  | 1  | 4   | 10  | .333 | 4  | 1  | 5  | 0   | .343 | 0  | 1  | 0-0    | 14  | 0   | 0  | 1.000 |
| 11 ALLEN, Ivory     | .200 | 6-4   | 5   | 1  | 1   | 0  | 0  | 0  | 0   | 1   | .200 | 3  | 0  | 2  | 0   | .500 | 0  | 0  | 0-0    | 4   | 0   | 0  | 1.000 |
| 6 MACQUEEN, Ashl    | .143 | 15-12 | 28  | 2  | 4   | 0  | 0  | 0  | 1   | 4   | .143 | 0  | 0  | 4  | 0   | .143 | 0  | 2  | 1-1    | 18  | 23  | 1  | .976  |
| 3 MASK, Robyn       | .115 | 11-10 | 26  | 1  | 3   | 1  | 0  | 0  | 0   | 4   | .154 | 2  | 0  | 8  | 0   | .179 | 0  | 1  | 0-0    | 9   | 19  | 2  | .933  |
| 8 KREUTZMAN, Kay    | .050 | 9-6   | 20  | 0  | 1   | 0  | 0  | 0  | 1   | 1   | .050 | 1  | 0  | 4  | 0   | .095 | 0  | 1  | 0-0    | 4   | 0   | 0  | 1.000 |
| 22 ROBERTS, Lyssa   | .000 | 10-3  | 13  | 0  | 0   | 0  | 0  | 0  | 0   | 0   | .000 | 0  | 0  | 3  | 0   | .000 | 0  | 0  | 0-0    | 10  | 3   | 3  | .813  |
| 10 KLABOUGH, Kim    | .000 | 4-2   | 5   | 0  | 0   | 0  | 0  | 0  | 0   | 0   | .000 | 0  | 0  | 4  | 0   | .000 | 0  | 0  | 0-0    | 0   | 6   | 1  | .857  |
| 9 REYNOLDS, Miche   | .000 | 1-1   | 1   | 0  | 0   | 0  | 0  | 0  | 0   | 0   | .000 | 0  | 0  | 1  | 0   | .000 | 0  | 0  | 0-0    | 0   | 0   | 0  | .000  |
| 17 STEPHENS, Amili  | .000 | 9-0   | 0   | 4  | 0   | 0  | 0  | 0  | 0   | 0   | .000 | 0  | 0  | 0  | 0   | .000 | 0  | 0  | 0-0    | 0   | 0   | 0  | .000  |
| 12 CHAPLIN, Daniell | .000 | 1-1   | 0   | 0  | 0   | 0  | 0  | 0  | 0   | 0   | .000 | 0  | 0  | 0  | 0   | .000 | 0  | 0  | 0-0    | 0   | 9   | 0  | 1.000 |
| Totals              | .281 | 15    | 417 | 60 | 117 | 14 | 2  | 9  | 54  | 162 | .388 | 40 | 6  | 69 | 0   | .351 | 1  | 9  | 4-5    | 301 | 118 | 17 | .961  |
| Opponents           | .317 | 15    | 432 | 90 | 137 | 25 | 4  | 13 | 77  | 209 | .484 | 35 | 2  | 78 | 0   | .369 | 2  | 12 | 17-22  | 302 | 109 | 20 | .954  |

LOB - Team (111), Opp (92). DP's turned - Team (2). IBB - Team (1), STEM, Caitla 1, Opp (3).

(MWC games only Sorted by Earned run avg)

| Player              | era   | w-l | app | gs | cg | sho | sv | ip    | h   | r  | er | bb | so | 2b | 3b | hr | b/avg | wp | hp | bk | sfa | sha |
|---------------------|-------|-----|-----|----|----|-----|----|-------|-----|----|----|----|----|----|----|----|-------|----|----|----|-----|-----|
| 10 KLABOUGH, Kim    | 3.50  | 2-1 | 8   | 1  | 0  | 0/0 | 0  | 18.0  | 28  | 15 | 9  | 2  | 11 | 6  | 2  | 2  | .346  | 2  | 0  | 0  | 0   | 3   |
| 15 EUBANKS, Kelli   | 4.93  | 3-5 | 13  | 7  | 2  | 0/0 | 1  | 61.0  | 78  | 46 | 43 | 22 | 54 | 15 | 0  | 9  | .305  | 3  | 1  | 1  | 1   | 8   |
| 12 CHAPLIN, Daniell | 7.57  | 2-1 | 8   | 6  | 1  | 0/0 | 0  | 20.1  | 27  | 25 | 22 | 11 | 12 | 2  | 2  | 2  | .303  | 4  | 1  | 0  | 0   | 1   |
| 14 PENLAND, Rebec   | 28.00 | 0-1 | 2   | 1  | 0  | 0/0 | 0  | 1.0   | 4   | 4  | 4  | 0  | 1  | 2  | 0  | 0  | .667  | 0  | 0  | 0  | 1   | 0   |
| Totals              | 5.44  | 7-8 | 15  | 15 | 3  | 0/0 | 1  | 100.1 | 137 | 90 | 78 | 35 | 78 | 25 | 4  | 13 | .317  | 9  | 2  | 1  | 2   | 12  |
| Opponents           | 3.06  | 8-7 | 15  | 15 | 5  | 2/0 | 0  | 100.2 | 117 | 60 | 44 | 40 | 69 | 14 | 2  | 9  | .281  | 6  | 6  | 0  | 1   | 9   |

PB - Team (0), Opp (1). SBA/ATT - CAUSGROVE, S (14-19), EUBANKS, Kel (12-16), KLABOUGH, Ki (2-3), CHAPLIN, Dan (3-3), MUNOZ, Ashle (3-3).



Danielle Chaplin and Ashley Munoz

## All-Time Series Results

## YEAR-BY-YEAR RESULTS

| Year   | Record          | Pct. | Coach           | Conference        |
|--------|-----------------|------|-----------------|-------------------|
| 1976   | 2-7             | .222 | Kelly Asmussen  | —                 |
| 1977   | 4-9             | .308 | Jane Martindell | —                 |
| 1978   | 4-12            | .250 | Sandi Caldwell  | —                 |
| 1979   | 2-14            | .125 | Jann Clevenger  | —                 |
| 1980   | 8-18            | .308 | Kim Buchanan    | —                 |
| 1981   | 22-22           | .500 | Kim Buchanan    | —                 |
| 1982   | 13-28           | .317 | Kim Buchanan    | —                 |
| 1983   | 5-19            | .208 | Kim Buchanan    | HCAC              |
| 1984   | 11-14           | .440 | Kim Buchanan    | HCAC (2-8, 5th)   |
| 1985   | 7-30            | .189 | Kim Vance       | HCAC (2-8, T-5th) |
| 1986   | 13-16           | .448 | Jo Evans        | HCAC (3-7, 6th)   |
| 1987   | 18-20           | .474 | Jo Evans        | HCAC (4-6, T-4th) |
| 1988   | 23-17           | .575 | #Jo Evans       | HCAC (4-6, T-4th) |
| 1989*  | 37-14           | .725 | #Jo Evans       | HCAC (7-3, 1st)   |
| 1990*  | 23-17           | .575 | #Sandy Pearsall | HCAC (8-2, 1st)   |
| 1991   | 22-26           | .458 | Sandy Pearsall  | WAC (4-6, T-4th)  |
| 1992   | 33-25           | .569 | Sandy Pearsall  | WAC (4-6, T-3rd)  |
| 1993   | Did Not Compete |      |                 |                   |
| 1994   | 22-30-1         | .425 | Candi Letts     | WAC (9-16, T-6th) |
| 1995   | 24-19           | .558 | Candi Letts     | WAC (12-15, 5th)  |
| 1996   | 31-22           | .585 | Candi Letts     | WAC (16-12, 4th)  |
| 1997*  | 51-14           | .785 | #Candi Letts    | WAC (26-6, 1st)   |
| 1998   | 32-21           | .603 | Candi Letts     | WAC (16-13, 4th)  |
| 1999   | 17-24           | .415 | Teri Klement    | WAC (6-14, 7th)   |
| 2000   | 20-32           | .385 | Teri Klement    | MWC (8-12, 4th)   |
| 2001   | 10-37           | .213 | Mary Yori       | MWC (7-12, 5th)   |
| 2002   | 19-33           | .365 | Mary Yori       | MWC (4-15, 6th)   |
| 2003*  | 37-15           | .712 | #Mary Yori      | MWC (13-7, 2nd)   |
| 2004*  | 40-14           | .741 | #Mary Yori      | MWC (16-4, 1st)   |
| 2005   | 30-22           | .577 | Mary Yori       | MWC (8-8, 3rd)    |
| 2006   | 26-26           | .500 | Mary Yori       | MWC (6-14, 5th)   |
| 2007   | 30-28           | .517 | Mary Yori       | MWC (9-10, 3rd )  |
| 2008   | 29-22           | .569 | Mary Yori       | MWC (9-11, 4th)   |
| 2009   | 26-25           | .510 | Mary Yori       | MWC (7-8, T-3rd)  |
| Totals | 691-692-1       | .499 |                 |                   |

\* Conference Champions # Named Conference Coach of the Year

## COACHING RECORDS

| Years   | Coach           | Record    | Pct. |
|---------|-----------------|-----------|------|
| 1976    | Kelly Asmussen  | 2-7       | .222 |
| 1977    | Jane Martindell | 4-9       | .308 |
| 1978    | Sandi Caldwell  | 4-12      | .250 |
| 1979    | Jann Clevenger  | 2-14      | .125 |
| 1980-84 | Kim Buchanan    | 59-101    | .369 |
| 1985    | Kim Vance       | 7-30      | .189 |
| 1986-89 | Jo Evans        | 91-67     | .576 |
| 1990-92 | Sandy Pearsall  | 78-68     | .534 |
| 1994-98 | Candi Letts     | 160-106-1 | .602 |
| 1999-00 | Teri Klement    | 37-56     | .398 |
| 2001-   | Mary Yori       | 247-222   | .527 |

|                           |       |                          |       |
|---------------------------|-------|--------------------------|-------|
| Adams State               | 9-0   | Jacksonville State       | 1-0   |
| Air Force                 | 6-2   | Kansas                   | 1-13  |
| Akron                     | 2-2   | Kent State               | 1-0   |
| Arizona                   | 0-20  | Kentucky                 | 1-0   |
| Arizona State             | 3-11  | Liberty                  | 0-2   |
| Arizona Western           | 0-1   | Long Beach State         | 3-2   |
| Arkansas                  | 3-2   | Louisiana State          | 2-0   |
| ASA All-Stars             | 0-1   | Louisiana Tech           | 2-0   |
| Augustana                 | 0-2   | Loyola-Chicago           | 4-0   |
| Austin Peay State         | 1-0   | Loyola Marymount         | 4-1   |
| Ball State                | 2-0   | Maine                    | 1-0   |
| Baylor                    | 5-4   | Mankato State            | 0-3   |
| Bethune-Cookman           | 1-0   | Massachusetts            | 1-2   |
| Binghamton                | 2-0   | McNeese State            | 2-0   |
| Boise State               | 1-0   | Mercer                   | 1-0   |
| Bowling Green             | 1-0   | Mesa State               | 14-6  |
| Brigham Young             | 16-23 | Metro State              | 35-14 |
| Bucknell                  | 2-0   | Michigan                 | 1-0   |
| Butler                    | 1-0   | Michigan State           | 0-1   |
| California                | 3-8   | Minnesota                | 3-2   |
| Cal Poly                  | 3-11  | Mississippi              | 2-2   |
| Cal Poly-Pomona           | 0-3   | Mississippi State        | 1-2   |
| Cal State Fullerton       | 0-6   | Missouri                 | 2-1   |
| Cal State Northridge      | 1-12  | Missouri-Kansas City     | 4-0   |
| Campbell                  | 1-0   | Nebraska                 | 4-14  |
| Centenary                 | 2-0   | Nebraska-Kearney         | 6-5   |
| Central Arizona           | 0-2   | Nebraska-Omaha           | 7-6   |
| Central Florida           | 0-1   | Nevada                   | 9-3   |
| Central Michigan          | 1-2   | New Mexico               | 42-46 |
| Chadron State             | 3-0   | New Mexico Highlands     | 6-0   |
| Chaminade                 | 1-0   | New Mexico State         | 21-24 |
| Cleveland State           | 1-0   | Nicholls State           | 1-2   |
| Colgate                   | 1-0   | North Dakota State       | 2-1   |
| Colorado                  | 10-3  | North Texas              | 1-1   |
| Colorado-Colorado Springs | 7-0   | Northeast Louisiana      | 2-0   |
| Colorado Mines            | 2-0   | Northern Arizona         | 0-6   |
| Colorado Women's College  | 4-5   | Northern Colorado        | 18-33 |
| Columbia                  | 2-0   | Northern Illinois        | 3-0   |
| Concordia College         | 1-0   | Northern Iowa            | 1-2   |
| Creighton                 | 18-21 | Northwest Missouri State | 0-1   |
| Dayton                    | 1-0   | Northwestern             | 1-1   |
| Dartmouth                 | 2-0   | Notre Dame               | 2-2   |
| DePaul                    | 0-3   | Ohio                     | 1-0   |
| Drake                     | 3-2   | Ohio State               | 2-4   |
| Evansville                | 1-0   | Oklahoma                 | 5-7   |
| Fairleigh Dickinson       | 1-0   | Oklahoma City            | 2-2   |
| Florida State             | 1-1   | Oklahoma State           | 1-6   |
| Fresno State              | 4-25  | Oregon                   | 4-7   |
| George Mason              | 1-0   | Oregon State             | 1-4   |
| Hawaii                    | 7-10  | Pacific                  | 0-7   |
| Illinois                  | 1-0   | Penn                     | 1-0   |
| Illinois-Chicago          | 2-0   | Penn State               | 3-1   |
| Illinois State            | 2-4   | Peru State               | 4-0   |
| Indiana                   | 3-2   | Pima                     | 1-3   |
| Indiana State             | 2-0   | Pittsburgh State         | 0-1   |
| Iona                      | 1-0   | Portland State           | 2-1   |
| Iowa                      | 2-3   | Princeton                | 1-2   |
| Iowa State                | 2-2   | Purdue                   | 1-2   |
| IPFW                      | 1-0   | Regis                    | 11-0  |
| Jacksonville              | 1-0   | Rhode Island             | 2-0   |

|                          |       |                     |                  |
|--------------------------|-------|---------------------|------------------|
| Rutgers                  | 1-1   | Texas-San Antonio   | 4-5              |
| Sacramento State         | 11-11 | Texas State         | 7-1              |
| Sam Houston State        | 1-0   | Texas Tech          | 2-2              |
| St. Francis-New York     | 1-0   | Toledo              | 6-1              |
| St. Mary's-California    | 4-1-1 | Tulsa               | 10-4             |
| St. Mary's-Nebraska      | 0-1   | UCLA                | 0-6              |
| St. Mary's of the Plains | 1-0   | UC Davis            | 1-3              |
| St. Mary's-Texas         | 1-0   | UC Riverside        | 4-0              |
| Sam Houston State        | 5-2   | UC Santa Barbara    | 1-2              |
| San Diego                | 5-1   | UNLV                | 29-26            |
| San Diego State          | 27-41 | Utah                | 40-54            |
| San Jose State           | 10-10 | Utah State          | 16-24            |
| Santa Clara              | 5-2   | Villanova           | 0-1              |
| South Dakota             | 3-1   | Virginia            | 1-0              |
| Southeast Missouri State | 1-0   | Vermont             | 1-1              |
| Southeastern Louisiana   | 3-0   | Wagner              | 1-0              |
| Southern Colorado        | 4-0   | Washington          | 0-4              |
| Southern Illinois        | 2-2   | Weber State         | 1-2              |
| Southern Mississippi     | 2-2   | West Florida        | 2-0              |
| Southern Utah            | 24-2  | Western Illinois    | 2-0              |
| Southwest Missouri State | 2-1   | Western Kentucky    | 1-0              |
| Southwestern Louisiana   | 0-2   | Western Michigan    | 0-3              |
| Stephen F. Austin        | 0-1   | Western State       | 3-2              |
| Stetson                  | 0-2   | Wichita State       | 7-3              |
| Syracuse                 | 1-0   | Winthrop            | 1-0              |
| Temple                   | 0-1   | Wisconsin-Green Bay | 3-0              |
| Tennessee-Martin         | 2-0   | Wyoming             | 6-14             |
| Nevada                   | 2-7   | Yale                | 2-0              |
| Texas A&M                | 2-7   | Youngstown State    | 2-1              |
| Texas A&M-Corpus Christi | 1-0   | <b>TOTAL:</b>       | <b>691-692-1</b> |
| Texas-Arlington          | 6-2   |                     |                  |



Head Coach Mary Yori with Rebecca Penland, Caitlan Stern and Brianna Donahue



## Career Records



Lauren Cusick

**Games Played**

|                      |         |     |
|----------------------|---------|-----|
| 1. Sarah Fredstrom   | 1995-98 | 212 |
| 2. Lauren Cusick     | 2005-08 | 210 |
| 3. Kerry Farrell     | 2002-05 | 208 |
| 4. Stephanie Roberts | 2002-05 | 208 |
| 5. Alyson Carter     | 1997-00 | 207 |

**Games Started**

|                      |         |     |
|----------------------|---------|-----|
| 1. Sarah Fredstrom   | 1995-98 | 212 |
| 2. Lauren Cusick     | 2005-08 | 210 |
| 3. Stephanie Roberts | 2002-05 | 208 |
| 4. Kerry Farrell     | 2002-05 | 207 |
| 5. Alyson Carter     | 1997-00 | 205 |

**At Bats**

|                       |         |     |
|-----------------------|---------|-----|
| 1. Sarah Fredstrom    | 1995-98 | 686 |
| 2. Jessica Strickland | 2004-07 | 660 |
| 3. Jennifer Buford    | 1995-98 | 655 |
| 4. Lauren Cusick      | 2005-08 | 639 |
| 5. Alyson Carter      | 1997-00 | 637 |

**Batting Avg.  
(Min. 250 at bats)**

|                       |         |      |
|-----------------------|---------|------|
| 1. Teri Klement       | 1988-91 | .382 |
| 2. Caitlan Stem       | 2008-   | .373 |
| 3. Ricki Walker       | 2002-04 | .368 |
| 4. Jessica Strickland | 2004-07 | .367 |
| Holly Schmillen       | 1998-01 | .367 |
| Sarah Fredstrom       | 1995-98 | .367 |

**Runs**

|                       |         |     |
|-----------------------|---------|-----|
| 1. Jennifer Buford    | 1995-98 | 166 |
| 2. Lauren Cusick      | 2005-08 | 161 |
| 3. Stephanie Roberts  | 2002-05 | 154 |
| 4. Sarah Fredstrom    | 1995-98 | 146 |
| 5. Jessica Strickland | 2004-07 | 141 |

**Hits**

|                       |         |     |
|-----------------------|---------|-----|
| 1. Sarah Fredstrom    | 1995-98 | 252 |
| 2. Jessica Strickland | 2004-07 | 242 |
| 2. Jennifer Buford    | 1995-98 | 231 |
| 4. Alyson Carter      | 1997-00 | 227 |
| 5. Lauren Cusick      | 2005-08 | 224 |

**Doubles**

|                       |         |    |
|-----------------------|---------|----|
| 1. Jessica Strickland | 2004-07 | 64 |
| 2. Sarah Fredstrom    | 1995-98 | 51 |
| 3. Lauren Cusick      | 2005-08 | 50 |
| 4. Allison Majam      | 2007-   | 42 |
| 5. Ricki Walker       | 2002-04 | 41 |
| Alyson Carter         | 1997-00 | 41 |

**Triples**

|                    |         |    |
|--------------------|---------|----|
| 1. Holly Schmillen | 1998-01 | 29 |
| 2. Sarah Fredstrom | 1995-98 | 15 |
| 3. Teri Klement    | 1988-91 | 11 |
| Gayle Groninger    | 1981-84 | 11 |
| 5. Jennifer Buford | 1995-98 | 9  |



Jennifer Buford

**Home Runs**

|                       |         |    |
|-----------------------|---------|----|
| 1. Lauren Cusick      | 2005-08 | 38 |
| 2. Brittany Huerta    | 2004-07 | 33 |
| 3. Jessica Strickland | 2004-07 | 32 |
| Sarah Fredstrom       | 1995-98 | 32 |
| 5. Holly Schmillen    | 1998-01 | 30 |

**Slugging Pct.  
(Min. 250 at bats)**

|                       |         |      |
|-----------------------|---------|------|
| 1. Holly Schmillen    | 1998-01 | .694 |
| 2. Lauren Cusick      | 2005-08 | .629 |
| 3. Sarah Fredstrom    | 1995-98 | .625 |
| 4. Jessica Strickland | 2004-07 | .621 |
| 5. Ricki Walker       | 2002-04 | .584 |



Ricki Walker

**Runs Batted In**

|                       |         |     |
|-----------------------|---------|-----|
| 1. Sarah Fredstrom    | 1995-98 | 183 |
| 2. Jessica Strickland | 2004-07 | 150 |
| 3. Alyson Carter      | 1997-00 | 121 |
| Teri Klement          | 1988-91 | 121 |
| 5. Lauren Cusick      | 2005-08 | 119 |

**Bases on Balls**

|                      |         |    |
|----------------------|---------|----|
| 1. Stephanie Roberts | 2002-05 | 85 |
| 2. Holly Schmillen   | 1998-01 | 77 |
| 3. Lauren Cusick     | 2005-08 | 75 |
| 4. Stephanie Norton  | 1996-99 | 61 |
| 5. Jennifer Buford   | 1995-98 | 56 |
| Ashley Munoz         | 2007-   | 56 |

**Stolen Bases**

|                      |         |    |
|----------------------|---------|----|
| 1. Jennifer Buford   | 1995-98 | 81 |
| 2. Sara Hyzer        | 1997-00 | 50 |
| 3. Amber Solano      | 1994-97 | 49 |
| 4. Stephanie Roberts | 2002-05 | 33 |
| Tina Trujillo        | 1989-92 | 33 |

**Games Pitched**

|                       |         |     |
|-----------------------|---------|-----|
| 1. Jessica Strickland | 2004-07 | 123 |
| 2. Kyla Kiester       | 1998-01 | 115 |
| 3. Kim Klabough       | 2006-09 | 113 |
| 4. Megan Masser       | 2001-04 | 104 |
| 5. Nikki Johnson      | 1995-97 | 102 |

**Games As Starting Pitcher**

|                       |         |    |
|-----------------------|---------|----|
| 1. Kyla Kiester       | 1998-01 | 82 |
| Nikki Johnson         | 1995-97 | 82 |
| 3. Jessica Strickland | 2004-07 | 77 |
| 4. Erin Bennett       | 1996-98 | 73 |
| 5. Megan Masser       | 2001-04 | 68 |
| Kim Klabough          | 2006-09 | 68 |

**Complete Games**

|                    |         |    |
|--------------------|---------|----|
| 1. Nikki Johnson   | 1995-97 | 81 |
| 2. Dana VanderVeer | 1978-81 | 57 |
| 3. Kyla Kiester    | 1998-01 | 56 |
| Erin Bennett       | 1996-98 | 56 |
| 5. Tammy Taylor    | 1984-87 | 54 |

**Innings Pitched**

|                       |         |       |
|-----------------------|---------|-------|
| 1. Nikki Johnson      | 1995-97 | 616.2 |
| 2. Kyla Kiester       | 1998-01 | 564.1 |
| 3. Jessica Strickland | 2004-07 | 544.2 |
| 4. Kim Klabough       | 2006-09 | 498.0 |
| 5. Megan Masser       | 2001-04 | 466.1 |

**Victories**

|                       |         |    |
|-----------------------|---------|----|
| 1. Nikki Johnson      | 1995-97 | 65 |
| 2. Jessica Strickland | 2004-07 | 43 |
| Kim Klabough          | 2006-09 | 43 |
| 4. Kristy Wirth       | 1988-91 | 41 |
| 5. Megan Masser       | 2001-04 | 40 |
| Erin Bennett          | 1996-98 | 40 |

**Earned Run Avg.  
(Min. 200 innings)**

|                  |         |      |
|------------------|---------|------|
| 1. Kristy Wirth  | 1988-91 | 1.48 |
| 2. Kathy Sai     | 1988-90 | 1.64 |
| 3. Nikki Johnson | 1995-97 | 1.77 |
| 4. Tammy Taylor  | 1984-87 | 2.21 |
| 5. Megan Masser  | 2001-04 | 2.31 |



Megan Masser

**Saves**

|                       |         |    |
|-----------------------|---------|----|
| 1. Jessica Strickland | 2004-07 | 11 |
| 2. Megan Masser       | 2001-04 | 10 |
| 3. Kim Klabough       | 2006-09 | 5  |
| Nikki Johnson         | 1995-97 | 5  |
| 5. Kyla Kiester       | 1998-01 | 4  |
| Rebecca Penland       | 2007-   | 4  |

**Strikeouts**

|                       |         |     |
|-----------------------|---------|-----|
| 1. Nikki Johnson      | 1995-97 | 493 |
| 2. Megan Masser       | 2001-04 | 355 |
| 3. Kim Klabough       | 2006-09 | 336 |
| 4. Jessica Strickland | 2004-07 | 299 |
| 5. Genevieve Kelly    | 2003-05 | 220 |

**Shutouts**

|                  |         |    |
|------------------|---------|----|
| 1. Nikki Johnson | 1995-97 | 20 |
| 2. Kristy Wirth  | 1988-91 | 19 |
| 3. Kathy Sai     | 1988-90 | 16 |
| 4. Kyla Kiester  | 1998-01 | 12 |
| 5. Kim Klabough  | 2006-09 | 10 |
| Megan Masser     | 2001-04 | 9  |
| Stacie Stafford  | 1991-92 | 9  |



Jessica Strickland

## Single Season Records

## At Bats

|                    |      |     |
|--------------------|------|-----|
| 1. Sarah Fredstrom | 1997 | 216 |
| 2. Jennifer Buford | 1997 | 201 |
| 3. Amber Solano    | 1997 | 199 |
| 4. Alyson Carter   | 1997 | 197 |
| 5. Tina Trujillo   | 1992 | 191 |
| Tara Harbert       | 2006 | 191 |

## Triples

|                    |      |    |
|--------------------|------|----|
| 1. Holly Schmillen | 1999 | 12 |
| 2. Holly Schmillen | 2000 | 9  |
| 3. Sarah Fredstrom | 1997 | 7  |
| 4. Holly Schmillen | 1998 | 6  |
| 5. Gayle Groninger | 1982 | 5  |
| Melanie Scheld     | 1982 | 5  |
| Gina Autobee       | 1981 | 5  |

Slugging Pct.  
(Min. 60 at Bats)

|                       |      |      |
|-----------------------|------|------|
| 1. Lauren Cusick      | 2008 | .863 |
| 2. Holly Schmillen    | 1999 | .767 |
| 3. Holly Schmillen    | 2000 | .761 |
| 4. Holly Schmillen    | 2001 | .727 |
| 5. Jessica Strickland | 2006 | .724 |

## Runs Batted In

|                       |      |    |
|-----------------------|------|----|
| 1. Sarah Fredstrom    | 1997 | 66 |
| 2. Sarah Fredstrom    | 1996 | 52 |
| Kelley Spence         | 1997 | 52 |
| 4. Jessica Strickland | 2006 | 51 |
| 5. Ricki Walker       | 2003 | 46 |

## Stolen Bases

|                      |      |    |
|----------------------|------|----|
| 1. Jennifer Buford   | 1997 | 31 |
| 2. Amber Solano      | 1997 | 29 |
| 3. Jennifer Buford   | 1998 | 28 |
| 4. Tara Harbert      | 2006 | 27 |
| 5. Stephanie Roberts | 2003 | 17 |

## Bases On Balls

|                      |      |    |
|----------------------|------|----|
| 1. Lauren Cusick     | 2008 | 30 |
| 2. Stephanie Roberts | 2005 | 27 |
| Stephanie Roberts    | 2004 | 26 |
| 4. Amy ReCouper      | 1996 | 23 |
| Ashley Munoz         | 2007 | 22 |

## Games Pitched

|                  |      |    |
|------------------|------|----|
| 1. Nikki Johnson | 1997 | 46 |
| 2. Megan Masser  | 2003 | 42 |
| 3. Kim Klabough  | 2006 | 37 |
| Jennifer Roberts | 1994 | 37 |
| 5. Lisa Mize     | 1992 | 35 |
| Stacie Stafford  | 1992 | 35 |

## Pitching Games Started

|                     |      |    |
|---------------------|------|----|
| 1. Nikki Johnson    | 1997 | 35 |
| 2. Jennifer Roberts | 1994 | 34 |
| 3. Kyla Kiester     | 2000 | 31 |
| 4. Lisa Mize        | 1992 | 30 |
| 5. Kathy Sai        | 1989 | 29 |

## Complete Games Pitched

|                     |      |    |
|---------------------|------|----|
| 1. Nikki Johnson    | 1997 | 35 |
| 2. Jennifer Roberts | 1994 | 29 |
| 3. Kathy Sai        | 1989 | 26 |
| Nikki Johnson       | 1996 | 26 |
| 5. Lisa Mize        | 1992 | 23 |
| Stacie Stafford     | 1992 | 23 |
| Erin Bennett        | 1998 | 23 |

## Innings Pitched

|                     |      |       |
|---------------------|------|-------|
| 1. Nikki Johnson    | 1997 | 260.1 |
| 2. Jennifer Roberts | 1994 | 216.2 |
| 3. Nikki Johnson    | 1996 | 207.0 |
| 4. Stacie Stafford  | 1992 | 196.0 |
| 5. Lisa Mize        | 1992 | 194.1 |

## Victories

|                    |      |    |
|--------------------|------|----|
| 1. Nikki Johnson   | 1997 | 33 |
| 2. Megan Masser    | 2003 | 20 |
| Kristy Wirth       | 1989 | 20 |
| 4. Lisa Mize       | 1992 | 18 |
| 5. Dana VanderVeer | 1981 | 17 |
| Kathy Sai          | 1989 | 17 |
| Nikki Johnson      | 1996 | 17 |

## Saves

|                       |      |   |
|-----------------------|------|---|
| 1. Jessica Strickland | 2004 | 7 |
| Megan Masser          | 2003 | 7 |
| 3. Kim Klabough       | 2006 | 3 |
| Megan Masser          | 2004 | 3 |
| Nikki Johnson         | 1997 | 3 |

Earned Run Avg.  
(Min. 100 innings)

|                    |      |      |
|--------------------|------|------|
| 1. Kristy Wirth    | 1989 | 0.95 |
| 2. Lisa Mize       | 1992 | 1.22 |
| 3. Tara Roush      | 1991 | 1.25 |
| 4. Dana VanderVeer | 1981 | 1.38 |
| 5. Stacie Stafford | 1992 | 1.39 |

## Shutouts

|                    |      |    |
|--------------------|------|----|
| 1. Nikki Johnson   | 1997 | 12 |
| 2. Kristy Wirth    | 1989 | 11 |
| 3. Stacie Stafford | 1992 | 9  |
| Kathy Sai          | 1989 | 9  |
| 5. Lisa Mize       | 1992 | 8  |

## Strikeouts

|                    |      |     |
|--------------------|------|-----|
| 1. Nikki Johnson   | 1997 | 271 |
| 2. Stacie Stafford | 1992 | 168 |
| 3. Megan Masser    | 2003 | 154 |
| 4. Nikki Johnson   | 1996 | 139 |
| 5. Kim Klabough    | 2006 | 136 |



Holly Schmillen

Batting Avg.  
(Min. 60 at bats)

|                       |      |      |
|-----------------------|------|------|
| 1. Teri Klement       | 1989 | .433 |
| 2. Jessica Strickland | 2006 | .417 |
| 3. Ricki Walker       | 2004 | .399 |
| 4. Sarah Fredstrom    | 1997 | .398 |
| 5. Lauren Cusick      | 2008 | .393 |

## Home Runs

|                    |      |    |
|--------------------|------|----|
| 1. Lauren Cusick   | 2008 | 20 |
| 2. Ashley Munoz    | 2007 | 14 |
| Brittany Huerta    | 2004 | 14 |
| 4. Brittany Huerta | 2007 | 12 |
| Jessica Strickland | 2006 | 12 |
| Sarah Fredstrom    | 1996 | 11 |

## Runs

|                    |      |    |
|--------------------|------|----|
| 1. Lauren Cusick   | 2008 | 61 |
| 2. Jennifer Buford | 1997 | 60 |
| 3. Sarah Fredstrom | 1997 | 57 |
| Amber Solano       | 1997 | 57 |
| 5. Tara Harbert    | 2006 | 48 |

## Hits

|                       |      |    |
|-----------------------|------|----|
| 1. Sarah Fredstrom    | 1997 | 86 |
| 2. Jessica Strickland | 2006 | 80 |
| 3. Jennifer Buford    | 1997 | 77 |
| Alyson Carter         | 1997 | 77 |
| 5. Tara Harbert       | 2006 | 72 |

## Doubles

|                       |      |    |
|-----------------------|------|----|
| 1. Jessica Strickland | 2005 | 19 |
| Sarah Fredstrom       | 1997 | 19 |
| 3. Kerry Farrell      | 2004 | 18 |
| Ricki Walker          | 2004 | 18 |
| Allison Majam         | 2007 | 18 |
| Jessica Strickland    | 2006 | 18 |



Sarah Fredstrom



Nikki Johnson



Kristy Wirth



## Team Records

### Winning Streak

|              |          |
|--------------|----------|
| 1. 1997..... | 18 Games |
| 2. 2003..... | 13 games |
| 1989.....    | 13 Games |
| 3. 2008..... | 8 Games  |
| 4. 2006..... | 7 games  |
| 5. 2007..... | 6 games  |

### Batting Average

|              |      |
|--------------|------|
| 1. 2004..... | .327 |
| 2. 1997..... | .322 |
| 3. 2006..... | .321 |
| 4. 2008..... | .313 |
| 5. 2005..... | .301 |
| 1998.....    | .301 |

### Runs

|              |     |
|--------------|-----|
| 1. 1997..... | 376 |
| 2. 2008..... | 302 |
| 3. 2007..... | 289 |
| 4. 2004..... | 276 |
| 5. 2006..... | 266 |

### Hits

|              |     |
|--------------|-----|
| 1. 1997..... | 571 |
| 2. 2004..... | 479 |
| 3. 2006..... | 468 |
| 4. 2008..... | 446 |
| 5. 2007..... | 442 |

### Doubles

|              |    |
|--------------|----|
| 1. 2004..... | 96 |
| 2. 2007..... | 90 |
| 3. 2008..... | 86 |
| 4. 2005..... | 78 |
| 5. 2006..... | 74 |

### Triples

|              |    |
|--------------|----|
| 1. 1982..... | 26 |
| 2. 1997..... | 23 |
| 3. 1989..... | 14 |
| 4. 2005..... | 12 |
| 1998.....    | 12 |
| 1994.....    | 12 |

### Home Runs

|              |    |
|--------------|----|
| 1. 2007..... | 78 |
| 2. 2008..... | 68 |
| 3. 2004..... | 58 |
| 4. 2006..... | 53 |
| 5. 2003..... | 26 |

### Slugging Pct.

|              |      |
|--------------|------|
| 1. 2008..... | .522 |
| 2. 2004..... | .521 |
| 3. 2006..... | .498 |
| 4. 2007..... | .491 |
| 5. 2005..... | .419 |

### Runs Batted In

|              |     |
|--------------|-----|
| 1. 1997..... | 306 |
| 2. 2008..... | 269 |
| 3. 2007..... | 263 |
| 4. 2004..... | 259 |
| 5. 2006..... | 248 |

### Stolen Bases

|              |     |
|--------------|-----|
| 1. 1997..... | 104 |
| 2. 1998..... | 60  |
| 3. 1989..... | 52  |
| 4. 2003..... | 46  |
| 5. 1994..... | 45  |

### Complete Games

|              |    |
|--------------|----|
| 1. 1997..... | 51 |
| 2. 1992..... | 46 |
| 1989.....    | 46 |
| 4. 1994..... | 45 |
| 5. 1996..... | 44 |

### Innings Pitched

|              |       |
|--------------|-------|
| 1. 1997..... | 430.2 |
| 2. 1992..... | 390.1 |
| 3. 2007..... | 387.0 |
| 4. 1996..... | 359.1 |
| 5. 2004..... | 357.2 |

### Earned Run Avg.

|              |      |
|--------------|------|
| 1. 1989..... | 1.27 |
| 2. 1992..... | 1.31 |
| 3. 1988..... | 1.64 |
| 4. 1990..... | 1.70 |
| 5. 1991..... | 1.71 |

### Shutouts

|              |    |
|--------------|----|
| 1. 1989..... | 20 |
| 2. 1992..... | 17 |
| 3. 2003..... | 14 |
| 1997.....    | 14 |
| 5. 1991..... | 12 |

### Strikeouts

|              |     |
|--------------|-----|
| 1. 1997..... | 349 |
| 2. 1992..... | 283 |
| 3. 2007..... | 281 |
| 4. 2004..... | 279 |
| 5. 2003..... | 249 |

### Fielding Pct.

|              |      |
|--------------|------|
| 1. 2004..... | .976 |
| 2. 2003..... | .975 |
| 3. 2005..... | .969 |
| 2006.....    | .969 |
| 5. 2007..... | .963 |
| 1997.....    | .963 |

### Wins

|              |    |
|--------------|----|
| 1. 1997..... | 51 |
| 2. 2004..... | 40 |
| 3. 2003..... | 37 |
| 1989.....    | 37 |
| 5. 1992..... | 33 |

### Winning Pct.

|              |              |
|--------------|--------------|
| 1. 1997..... | .785 (51-14) |
| 2. 2004..... | .741 (40-14) |
| 3. 1989..... | .725 (37-14) |
| 4. 2003..... | .712 (37-15) |
| 5. 1998..... | .588 (30-21) |



The 1997 softball team won a school-record 51 games and captured the first conference title in program history.



The 2003 team won the Mountain West Conference tournament championship and made the school's first appearance in the NCAA regional tournament.



The 2004 team won the Mountain West Conference regular-season championship with an overall record of 40-14, 16-4 in the MWC.

## Award Winners

**NFCA All-American**

|                    |                                  |
|--------------------|----------------------------------|
| <b>First Team</b>  |                                  |
| 1997               | Sarah Fredstrom                  |
| <b>Second Team</b> |                                  |
| 2006               | Jessica Strickland               |
| 1997               | Jennifer Buford<br>Nikki Johnson |

**Easton All-American**

|                    |                    |
|--------------------|--------------------|
| <b>First Team</b>  |                    |
| 2006               | Jessica Strickland |
| 2004               | Kerry Farrell      |
| <b>Second Team</b> |                    |
| 2008               | Lauren Cusick      |
| <b>Third Team</b>  |                    |
| 2005               | Stephanie Roberts  |
| 2003               | Ricki Walker       |

**CoSIDA Academic****All-American**

|                   |              |
|-------------------|--------------|
| <b>Third Team</b> |              |
| 2004              | Ricki Walker |

**NFCA Academic****All-American**

|      |            |
|------|------------|
| 1997 | Sara Hyzer |
|------|------------|

**NSCA Academic****All-American**

|      |                              |
|------|------------------------------|
| 1991 | Teri Klement<br>Kristy Wirth |
|------|------------------------------|

**NFCA All-Region**

|                    |  |
|--------------------|--|
| <b>First Team</b>  |  |
| 2009               | Caitlan Stem<br>Christine Thomsen                                    |
| 2006               | Jessica Strickland   |
| 2005               | Jessica Strickland   |
| 2004               | Kerry Farrell<br>Ricki Walker  |
| 2003               | Stephanie Roberts  |
| 1998               | Sarah Fredstrom  |
| 1997               | Jennifer Buford<br>Alyson Carter<br>Sarah Fredstrom<br>Nikki Johnson |
| 1990               | Teri Klement<br>Tina Trujillo<br>Lois Manin                          |
| <b>Second Team</b> |  |
| 2008               | Lauren Cusick<br>Allison Majam                                       |
| 2006               | Lauren Cusick  |
| 2005               | Stephanie Roberts  |

|      |  |
|------|--|
| 2004 | Brittany Huerta<br>Stephanie Roberts<br>Jessica Strickland |
| 2001 | Holly Schmillen  |
| 2000 | Alyson Carter<br>Holly Schmillen                           |
| 1999 | Alyson Carter<br>Holly Schmillen                           |
| 1998 | Jennifer Buford<br>Alyson Carter                           |
| 1997 | Amber Solano   |
| 1995 | Sarah Fredstrom<br>Malia Kuenzli                           |
| 1990 | Chris Oglesby  |
| 1989 | Teri Klement<br>Kathy Sai                                  |
| 1988 | Chris Oglesby<br>Andrea Reed<br>Kathy Sai                  |

**Region Coach of the Year**

|      |             |
|------|-------------|
| 1997 | Candi Letts |
|------|-------------|

**MWC Player of the Year**

|      |                   |
|------|-------------------|
| 2008 | Lauren Cusick     |
| 2003 | Stephanie Roberts |

**MWC Freshman of the Year**

|      |                    |
|------|--------------------|
| 2007 | Ashley Munoz       |
| 2004 | Jessica Strickland |

**MWC Coach of the Year**

|      |           |
|------|-----------|
| 2004 | Mary Yori |
| 2003 | Mary Yori |

**WAC Player of the Year**

|      |               |
|------|---------------|
| 1997 | Nikki Johnson |
|------|---------------|

**WAC Coach of the Year**

|      |             |
|------|-------------|
| 1997 | Candi Letts |
|------|-------------|

**HCAC Coach of the Year**

|      |                |
|------|----------------|
| 1990 | Sandy Pearsall |
| 1989 | Jo Evans       |
| 1988 | Jo Evans       |

**All-MWC**

|      |   |
|------|---|
| 2009 | Kelli Eubanks<br>Caitlan Stem                                     |
| 2008 | Lauren Cusick<br>Allison Majam<br>Ashley Munoz<br>Rebecca Penland |
| 2007 | Lauren Cusick   |

|      |   |
|------|---|
| 2006 | Allison Majam<br>Ashley Munoz<br>Jessica Strickland<br>Lauren Cusick<br>Tara Harbert<br>Jessica Strickland<br>Lauren Cusick<br>Brittany Huerta<br>Julia Kloppe<br>Stephanie Roberts<br>Jessica Strickland<br>Kerry Farrell<br>Megan Masser<br>Stephanie Roberts<br>Ricki Walker |
| 2005 | Lauren Cusick<br>Brittany Huerta<br>Julia Kloppe<br>Stephanie Roberts<br>Megan Masser<br>Stephanie Roberts<br>Jessica Strickland<br>Ricki Walker  |
| 2004 | Jen Mahoney<br>Megan Masser<br>Stephanie Roberts<br>Kyla Kiestler<br>Holly Schmillen<br>Alyson Carter<br>Brittania Erickson<br>Sara Hyzer<br>Holly Schmillen  |
| 2003 | Jen Mahoney<br>Megan Masser<br>Stephanie Roberts<br>Ricki Walker  |
| 2001 | Kyla Kiestler<br>Holly Schmillen  |
| 2000 | Alyson Carter<br>Brittania Erickson<br>Sara Hyzer<br>Holly Schmillen  |

**MWC Tournament MVP**

|      |              |
|------|--------------|
| 2003 | Megan Masser |
|------|--------------|

**MWC All-Tournament**

|      |  |
|------|--|
| 2005 | Lauren Cusick  |
| 2004 | Jennifer Gardner   |
| 2003 | Melanie Laffoon<br>Megan Masser<br>Stephanie Roberts<br>Ricki Walker<br>Maren Christensen<br>Ricki Walker<br>Holly Schmillen |
| 2002 | Maren Christensen<br>Ricki Walker  |
| 2000 | Holly Schmillen  |

**Academic All-MWC**

|      |  |
|------|--|
| 2009 | Kim Klabough<br>Allison Majam<br>Ashley Munoz<br>Michelle Reynolds<br>Lyssa Roberts<br>Cayte Billman<br>Erannne Daugharthy |
| 2008 | Allison Majam<br>Ashley Munoz<br>Allison Majam<br>Ashley Munoz<br>Melissa Routh  |
| 2007 | Allison Majam<br>Ashley Munoz<br>Melissa Routh   |

|      |   |
|------|---|
| 2006 | Jessica Strickland<br>Tara Harbert  |
| 2005 | Lauren Cusick<br>Kerry Farrell<br>Genevieve Kelly<br>Stephanie Roberts<br>Jessica Strickland<br>Kerry Farrell<br>Genevieve Kelly<br>Megan Masser<br>Stephanie Roberts<br>Ricki Walker<br>JayCee Wood<br>Carly Allen<br>Jennifer Gardner<br>Katie Koch<br>Jen Mahoney<br>Melanie Mahoney<br>Megan Masser<br>Stephanie Roberts<br>Allisa Thompson<br>Ricki Walker<br>Lindsay Haun<br>Katie Koch<br>Amanda Kocis<br>Jen Mahoney<br>Melanie Mahoney<br>Megan Masser<br>Stephanie Roberts<br>Kai Stone<br>Allisa Thompson<br>Ricki Walker<br>Katie Benton<br>Arica Heisel<br>Kyla Kiestler<br>Katie Koch<br>Amanda Kocis<br>Kai Stone<br>Sara Hyzer<br>Beth Karabensh<br>Kyla Kiestler<br>Katie Koch |
| 2004 | Genevieve Kelly<br>Megan Masser<br>Stephanie Roberts<br>Ricki Walker<br>JayCee Wood<br>Carly Allen<br>Jennifer Gardner<br>Katie Koch<br>Jen Mahoney<br>Melanie Mahoney<br>Megan Masser<br>Stephanie Roberts<br>Allisa Thompson<br>Ricki Walker<br>Lindsay Haun<br>Katie Koch<br>Amanda Kocis<br>Jen Mahoney<br>Melanie Mahoney<br>Megan Masser<br>Stephanie Roberts<br>Kai Stone<br>Allisa Thompson<br>Ricki Walker<br>Katie Benton<br>Arica Heisel<br>Kyla Kiestler<br>Katie Koch<br>Amanda Kocis<br>Kai Stone<br>Sara Hyzer<br>Beth Karabensh<br>Kyla Kiestler<br>Katie Koch  |
| 2003 | Carly Allen<br>Jennifer Gardner<br>Katie Koch<br>Jen Mahoney<br>Melanie Mahoney<br>Megan Masser<br>Stephanie Roberts<br>Allisa Thompson<br>Ricki Walker<br>Lindsay Haun<br>Katie Koch<br>Amanda Kocis<br>Jen Mahoney<br>Melanie Mahoney<br>Megan Masser<br>Stephanie Roberts<br>Kai Stone<br>Allisa Thompson<br>Ricki Walker<br>Katie Benton<br>Arica Heisel<br>Kyla Kiestler<br>Katie Koch<br>Amanda Kocis<br>Kai Stone<br>Sara Hyzer<br>Beth Karabensh<br>Kyla Kiestler<br>Katie Koch   |
| 2002 | Lindsay Haun<br>Katie Koch<br>Amanda Kocis<br>Jen Mahoney<br>Melanie Mahoney<br>Megan Masser<br>Stephanie Roberts<br>Kai Stone<br>Allisa Thompson<br>Ricki Walker<br>Katie Benton<br>Arica Heisel<br>Kyla Kiestler<br>Katie Koch<br>Amanda Kocis<br>Kai Stone<br>Sara Hyzer<br>Beth Karabensh<br>Kyla Kiestler<br>Katie Koch  |
| 2001 | Katie Koch<br>Jen Mahoney<br>Melanie Mahoney<br>Megan Masser<br>Stephanie Roberts<br>Allisa Thompson<br>Ricki Walker<br>Lindsay Haun<br>Katie Koch<br>Amanda Kocis<br>Jen Mahoney<br>Melanie Mahoney<br>Megan Masser<br>Stephanie Roberts<br>Kai Stone<br>Allisa Thompson<br>Ricki Walker<br>Katie Benton<br>Arica Heisel<br>Kyla Kiestler<br>Katie Koch<br>Amanda Kocis<br>Kai Stone<br>Sara Hyzer<br>Beth Karabensh<br>Kyla Kiestler<br>Katie Koch  |
| 2000 | Amanda Kocis<br>Jen Mahoney<br>Melanie Mahoney<br>Megan Masser<br>Stephanie Roberts<br>Kai Stone<br>Allisa Thompson<br>Ricki Walker<br>Katie Benton<br>Arica Heisel<br>Kyla Kiestler<br>Katie Koch<br>Amanda Kocis<br>Kai Stone<br>Sara Hyzer<br>Beth Karabensh<br>Kyla Kiestler<br>Katie Koch  |

**MWC Scholar Athlete**

|      |   |
|------|---|
| 2009 | Allison Majam<br>Michelle Reynolds<br>Lyssa Roberts<br>Erannne Daugharthy<br>Allison Majam<br>Michelle Reynolds<br>Allison Majam<br>Melissa Routh<br>Stephanie Roberts<br>Allisa Thompson<br>Lindsay Haun |
| 2008 | Allison Majam<br>Michelle Reynolds<br>Allison Majam<br>Melissa Routh<br>Stephanie Roberts<br>Allisa Thompson<br>Lindsay Haun  |
| 2007 | Allison Majam<br>Melissa Routh<br>Stephanie Roberts<br>Allisa Thompson<br>Lindsay Haun  |
| 2003 | Allisa Thompson<br>Lindsay Haun   |
| 2002 | Lindsay Haun  |

|      |  |
|------|--|
| 2001 | Stephanie Roberts<br>Allisa Thompson<br>Eileen Hannigan<br>Lindsay Haun<br>Erin Murray |
|------|--|

**All-WAC  
First Team**

|      |  |
|------|--|
| 1999 | Sara Hyzer   |
| 1997 | Jennifer Buford<br>Alyson Carter<br>Nikki Johnson<br>Sarah Fredstrom<br>Amy ReCouper<br>Sarah Fredstrom<br>Tina Trujillo |

**2nd Team**

|      |  |
|------|--|
| 1999 | Alyson Carter  |
| 1998 | Jennifer Buford<br>Alyson Carter<br>Sarah Fredstrom<br>Holly Schmillen<br>Stephanie Norton<br>Amber Solano<br>Kelley Spence<br>Malia Kuenzli |
| 1997 | Stephanie Norton<br>Amber Solano<br>Kelley Spence<br>Malia Kuenzli   |
| 1996 | Kelley Spence  |
| 1995 | Malia Kuenzli  |

**Honorable Mention**

|      |   |
|------|---|
| 1994 | Malia Kuenzli<br>Jennifer Roberts           |
| 1992 | Julie Osborne<br>Jennifer Roberts           |
| 1991 | Teri Klement<br>Lisa Sciarrino<br>Amy Smith |

**Academic All-WAC**

|      |   |
|------|---|
| 1994 | Jennifer Roberts  |
| 1992 | Kim Johnson<br>Julie Osborne<br>Aimee Rice<br>Jennifer Roberts<br>Christa Robison<br>Sara Stout<br>Teri Klement<br>Aimee Rice<br>Kristy Wirth |
| 1991 | Teri Klement<br>Aimee Rice<br>Kristy Wirth  |

**All-HCAC**

|      |  |
|------|--|
| 1990 | Teri Klement<br>Keri Lucas<br>Kathy Sai<br>Kristy Wirth<br>Theresa Booco<br>Teri Klement<br>Tracy Reeseigh |
| 1989 | Theresa Booco<br>Teri Klement<br>Tracy Reeseigh  |

|                          |  |
|--------------------------|--|
| 1988                     | Kathy Sai<br>Teri Klement<br>Tracy Reeseigh  |
| 1987                     | Heidi Baughman<br>Theresa Booco<br>Chris Oglesby<br>Tammy Taylor<br>Moana Bader<br>Theresa Booco<br>Shari Yamashiro<br>Beth Lainson<br>Gina Autabee<br>Gayle Groninger |
| 1986                     | Moana Bader<br>Theresa Booco<br>Shari Yamashiro<br>Beth Lainson<br>Gina Autabee<br>Gayle Groninger   |
| 1984                     | Beth Lainson   |
| 1983                     | Gina Autabee<br>Gayle Groninger  |
| <b>Honorable Mention</b> |  |
| 1990                     | Lois Manin<br>Tracy Reeseigh<br>Tina Trujillo<br>Heather Love  |
| 1989                     | Heather Love   |

**Academic All-HCAC**

|      |   |
|------|---|
| 1990 | Aimee Rice<br>Kristy Wirth<br>Kristy Wirth<br>Theresa Booco<br>Amy Ratterman<br>Jenny Smock<br>Kristy Wirth<br>Theresa Booco<br>Tracy Lounsbury<br>Amy Ratterman<br>Tammy Taylor<br>Theresa Booco<br>Tracy Lounsbury<br>Edie Penry<br>Amy Ratterman<br>Tammy Taylor<br>Jean Bowman<br>Andrea Cunningham<br>Tracy Lounsbury<br>Susan Shibel<br>Tammy Taylor<br>Theresa Calloway<br>Beth Lainson<br>Tammy Taylor<br>Linda Beeler<br>Jean Bowman<br>Jan McFarren |
| 1989 | Theresa Booco<br>Tracy Lounsbury<br>Edie Penry<br>Amy Ratterman<br>Tammy Taylor<br>Jean Bowman<br>Andrea Cunningham<br>Tracy Lounsbury<br>Susan Shibel<br>Tammy Taylor<br>Theresa Calloway<br>Beth Lainson<br>Tammy Taylor<br>Linda Beeler<br>Jean Bowman<br>Jan McFarren   |
| 1988 | Theresa Booco<br>Amy Ratterman<br>Jenny Smock<br>Kristy Wirth<br>Theresa Booco<br>Tracy Lounsbury<br>Edie Penry<br>Amy Ratterman<br>Tammy Taylor<br>Jean Bowman<br>Andrea Cunningham<br>Tracy Lounsbury<br>Susan Shibel<br>Tammy Taylor<br>Theresa Calloway<br>Beth Lainson<br>Tammy Taylor<br>Linda Beeler<br>Jean Bowman<br>Jan McFarren  |
| 1987 | Theresa Booco<br>Tracy Lounsbury<br>Amy Ratterman<br>Jenny Smock<br>Kristy Wirth<br>Theresa Booco<br>Tracy Lounsbury<br>Edie Penry<br>Amy Ratterman<br>Tammy Taylor<br>Jean Bowman<br>Andrea Cunningham<br>Tracy Lounsbury<br>Susan Shibel<br>Tammy Taylor<br>Theresa Calloway<br>Beth Lainson<br>Tammy Taylor<br>Linda Beeler<br>Jean Bowman<br>Jan McFarren   |
| 1986 | Theresa Booco<br>Tracy Lounsbury<br>Edie Penry<br>Amy Ratterman<br>Tammy Taylor<br>Jean Bowman<br>Andrea Cunningham<br>Tracy Lounsbury<br>Susan Shibel<br>Tammy Taylor<br>Theresa Calloway<br>Beth Lainson<br>Tammy Taylor<br>Linda Beeler<br>Jean Bowman<br>Jan McFarren   |
| 1985 | Theresa Booco<br>Tracy Lounsbury<br>Edie Penry<br>Amy Ratterman<br>Tammy Taylor<br>Jean Bowman<br>Andrea Cunningham<br>Tracy Lounsbury<br>Susan Shibel<br>Tammy Taylor<br>Theresa Calloway<br>Beth Lainson<br>Tammy Taylor<br>Linda Beeler<br>Jean Bowman<br>Jan McFarren   |
| 1984 | Theresa Booco<br>Tracy Lounsbury<br>Edie Penry<br>Amy Ratterman<br>Tammy Taylor<br>Jean Bowman<br>Andrea Cunningham<br>Tracy Lounsbury<br>Susan Shibel<br>Tammy Taylor<br>Theresa Calloway<br>Beth Lainson<br>Tammy Taylor<br>Linda Beeler<br>Jean Bowman<br>Jan McFarren   |
| 1983 | Theresa Booco<br>Tracy Lounsbury<br>Edie Penry<br>Amy Ratterman<br>Tammy Taylor<br>Jean Bowman<br>Andrea Cunningham<br>Tracy Lounsbury<br>Susan Shibel<br>Tammy Taylor<br>Theresa Calloway<br>Beth Lainson<br>Tammy Taylor<br>Linda Beeler<br>Jean Bowman<br>Jan McFarren   |



# All-Americans



Jennifer Buford  
1997 NFCA Second Team



Sarah Fredstrom  
1997 NFCA First Team



Kerry Farrell  
2004 Easton First Team



Nikki Johnson  
1997 NFCA Second Team



Ricki Walker  
2003 Easton Third Team  
2004 Easton Honorable Mention



Lauren Cusick  
2008 NFCA Second Team



Stephanie Roberts  
2005 Easton Third Team



Jessica Strickland  
2004 Easton Honorable Mention  
2006 Easton First Team



# GEAR UP

As you move through life, rely on  
American Family Insurance. We'll  
help you gear up by providing  
reliable insurance protection.

Call me today.



*All your protection under one roof®*

***[www.amfam.com](http://www.amfam.com)***



Lesa Ringkjob  
375 East Horsetooth Road  
Building 6, Suite 100  
Fort Collins, Colorado 80525  
Office: 970-223-0940  
Fax: 970-223-1279  
E-Mail: [lringkjo@amfam.com](mailto:lringkjo@amfam.com)  
17320 R.0/06



**FASTPITCH HAS NEVER SEEN  
SPEED LIKE THIS**

INTRODUCING EASTON'S ALL-NEW STEALTH AND SYNERGY FASTPITCH BATS



**GOOD LUCK RAMS**  
MAKE 2010 A CHAMPIONSHIP SEASON



COLORADO STATE SOFTBALL POWERED BY EASTON





*Seniors*



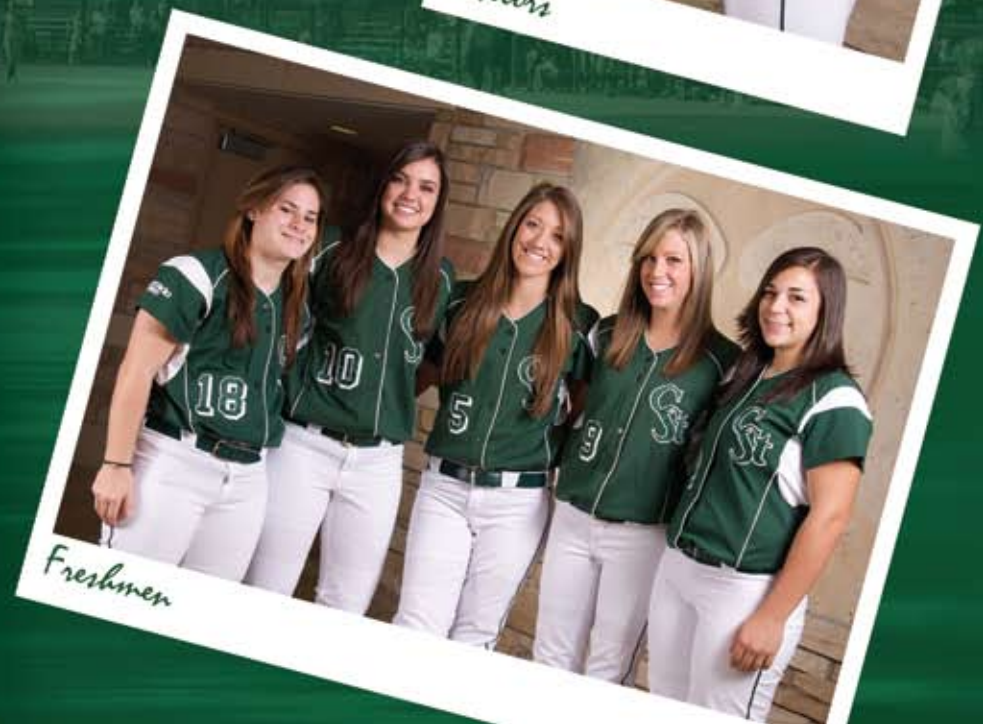
*Sophomores*



*Juniors*



*Coaching Staff*



*Freshmen*





**KELLI EUBANKS**  
2009 ALL-MOUNTAIN WEST CONFERENCE

## 2010 SCHEDULE

**HILTON LAS CRUCES CLASSIC (LAS CRUCES, N.M.)**  
FEB. 12 AT NEW MEXICO STATE 4:30 P.M.  
VS. PENN STATE 7 P.M.  
FEB. 13 VS. NEBRASKA 12 P.M.  
FEB. 14 VS. UTSA 9:30 A.M.  
VS. UTEP 11:30 A.M.

**NORTH TEXAS SLEEP INN CLASSIC (DENTON, TEXAS)**  
FEB. 19 VS. SAM HOUSTON STATE 11:30 A.M.  
VS. MISSOURI STATE 4:30 P.M.  
FEB. 20 VS. DRAKE 11:30 A.M.  
AT NORTH TEXAS 2 P.M.  
FEB. 21 VS. BUFFALO 8 A.M.

**CATHEDRAL CITY CLASSIC (PALM SPRINGS, CALIF.)**  
FEB. 26 VS. PACIFIC 2 P.M.  
VS. UCLA 7 P.M.  
FEB. 27 VS. CAL STATE FULLERTON 6:30 P.M.  
FEB. 28 VS. LONG BEACH STATE 10 A.M.  
VS. CALIFORNIA 12 P.M.

**COLORADO STATE CLASSIC (FORT COLLINS, COLO.)**  
MARCH 5 NORTH DAKOTA STATE 1 P.M.  
UTAH VALLEY 3 P.M.  
MARCH 6 UTAH STATE 11 A.M.  
MARCH 7 SOUTH DAKOTA STATE 1 P.M.  
SOUTH DAKOTA STATE 3 P.M.

MARCH 11 VS. CAL STATE NORTHRIDGE 5:30 P.M.  
**BAYER CROP SCIENCE CLASSIC (FRESNO, CALIF.)**  
MARCH 12 VS. MISSISSIPPI STATE 5:30 P.M.  
AT FRESNO STATE 8 P.M.  
MARCH 13 VS. EAST TENNESSEE STATE 10 A.M.  
MARCH 14 VS. GEORGETOWN 12:30 P.M.

MARCH 16 VS. PRINCETON 4 P.M.  
MARCH 17 AT SAINT MARY'S 3 P.M.  
AT SAINT MARY'S 5 P.M.  
MARCH 18 AT SACRAMENTO STATE 3 P.M.

**CAPITAL CLASSIC (SACRAMENTO, CALIF.)**  
MARCH 19 VS. NEVADA 12 P.M.  
AT SACRAMENTO STATE 4 P.M.  
MARCH 20 VS. NEVADA 12 P.M.  
MARCH 21 VS. UTAH STATE 12 P.M.

MARCH 27 AT NORTHERN COLORADO 12 P.M.  
AT NORTHERN COLORADO 3 P.M.  
APRIL 6 NORTHERN COLORADO 4 P.M.  
APRIL 9 AT UNLV\* 7 P.M.  
APRIL 10 AT SAN DIEGO STATE\* 7 P.M.  
APRIL 11 AT SAN DIEGO STATE\* 2 P.M.  
APRIL 15 UTAH\* 4 P.M.  
APRIL 16 BYU\* 4 P.M.  
APRIL 17 BYU\* 1 P.M.  
APRIL 20 NORTHERN COLORADO 4 P.M.  
APRIL 24 AT NEW MEXICO\* 1 P.M.  
APRIL 25 AT NEW MEXICO\* 1 P.M.  
APRIL 29 AT BYU\* 5 P.M.  
APRIL 30 AT UTAH\* 4 P.M.  
MAY 1 AT UTAH\* 1 P.M.  
MAY 8 NEW MEXICO\* 1 P.M.  
MAY 13 SAN DIEGO STATE\* 4 P.M.  
MAY 14 UNLV\* 4 P.M.  
MAY 15 UNLV\* 1 P.M.

\* MWC OPPONENT  
ALL TIMES ARE MOUNTAIN

**CAITLAN STEM**  
2009 ALL-MOUNTAIN WEST CONFERENCE



FOLLOW THE RAMS @ CSURAMS.COM AND TWITTER.COM/CSUSOFTBALL