



Artist Statement:

Taylor Gornell

In my body of work, the aim is to explore the ski industry in Colorado in an in-depth and personal way connecting what is easily observed with what is behind the scene. My work shows unexpected elements connected to a whole. For the past four years, I have worked the winter season at a ski resort as a lift operator and have had an opportunity to learn about ski lifts more comprehensively.

To show a side of the ski industry that people may not typically think about brings out a different perspective on the experience. Within a leisure activity such as skiing or snowboarding, people are not mindful of everything that has gone into making that activity possible.

I was able to photograph different lifts that have unique types of motors and maintenance behind them. I want to express a different side of ski lifts; how they are operated, what makes them run, and the mechanics behind the lift.

Title**Original Format**

Figure 1: Silver Bullet

Archival Pigment Print, 15 in x 15 in

Figure 2: Christie III

Archival Pigment Print, 15 in x 15 in

Figure 3: Priest Creek Motor Room

Archival Pigment Print, 15 in x 15 in

Figure 4: Priest Creek

Archival Pigment Print, 15 in x 15 in

Figure 5: Tower Eight

Archival Pigment Print, 15 in x 15 in

Figure 6: Christie III Motor Room

Archival Pigment Print, 15 in x 15 in

Figure 7: Control Room

Archival Pigment Print, 15 in x 15 in

Figure 8: Untitled 1

Archival Pigment Print, 15 in x 15 in

Figure 9: Untitled 2

Archival Pigment Print, 15 in x 15 in

Figure 10: Untitled 3

Archival Pigment Print, 15 in x 15 in



Figure 1: Silver Bullet



Figure 2: Christie III Motor Room



Figure 3: Priest Creek



Figure 4: Priest Creek II



Figure 5: Tower Eight



Figure 6: Christie III Motor Room

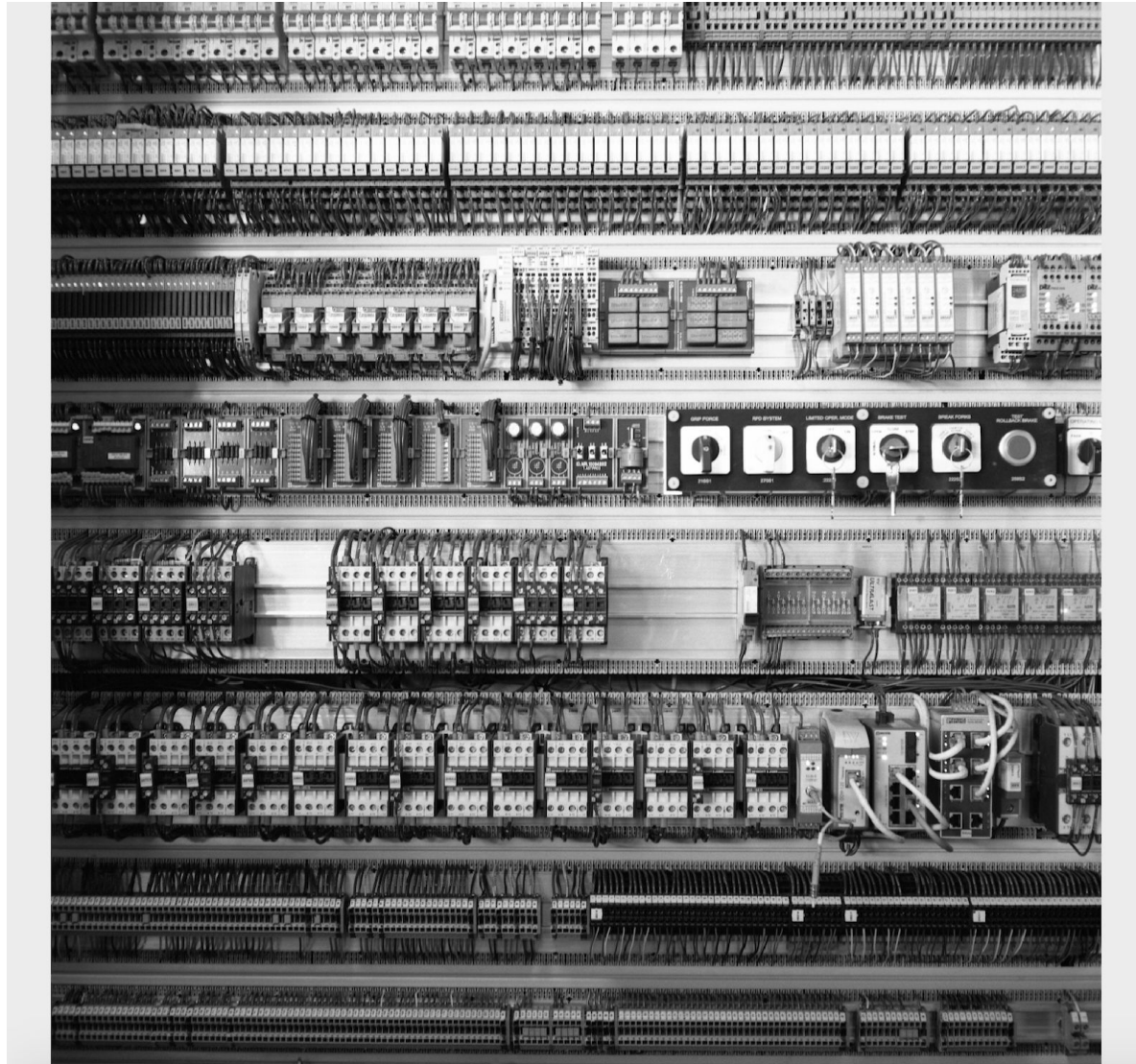


Figure 7: Control Room

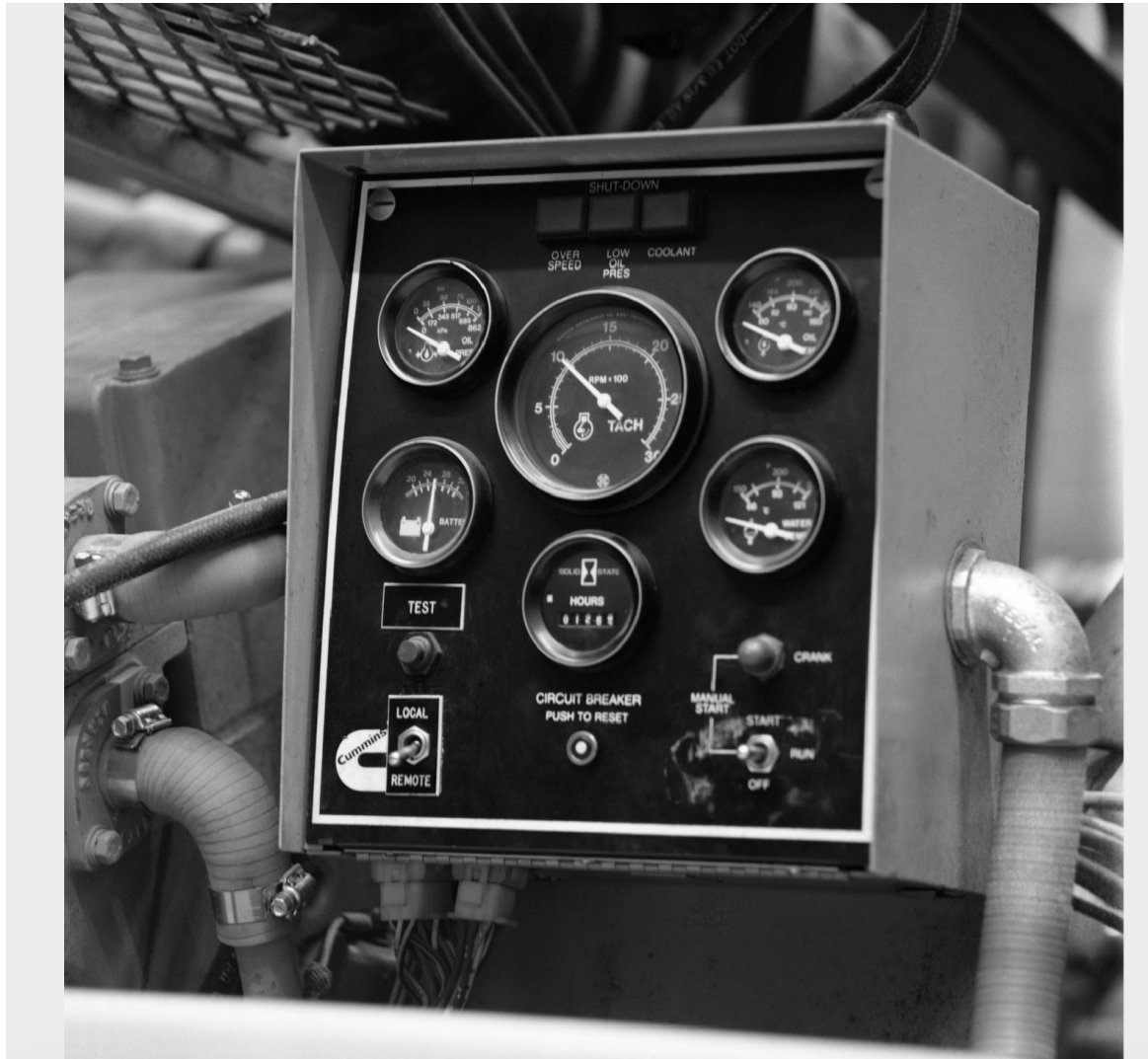


Figure 8: Untitled 1

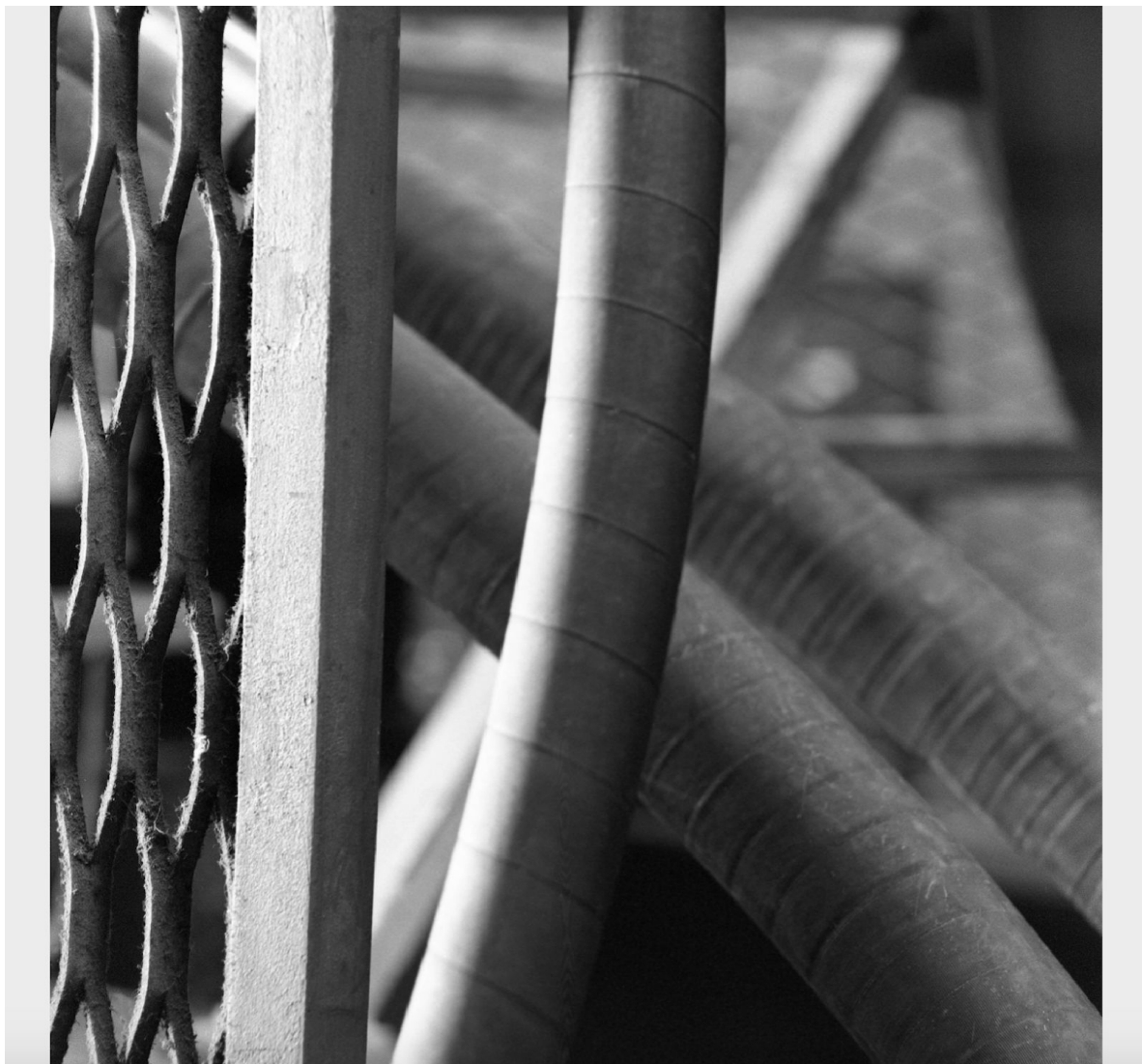


Figure 9: Untitled 2

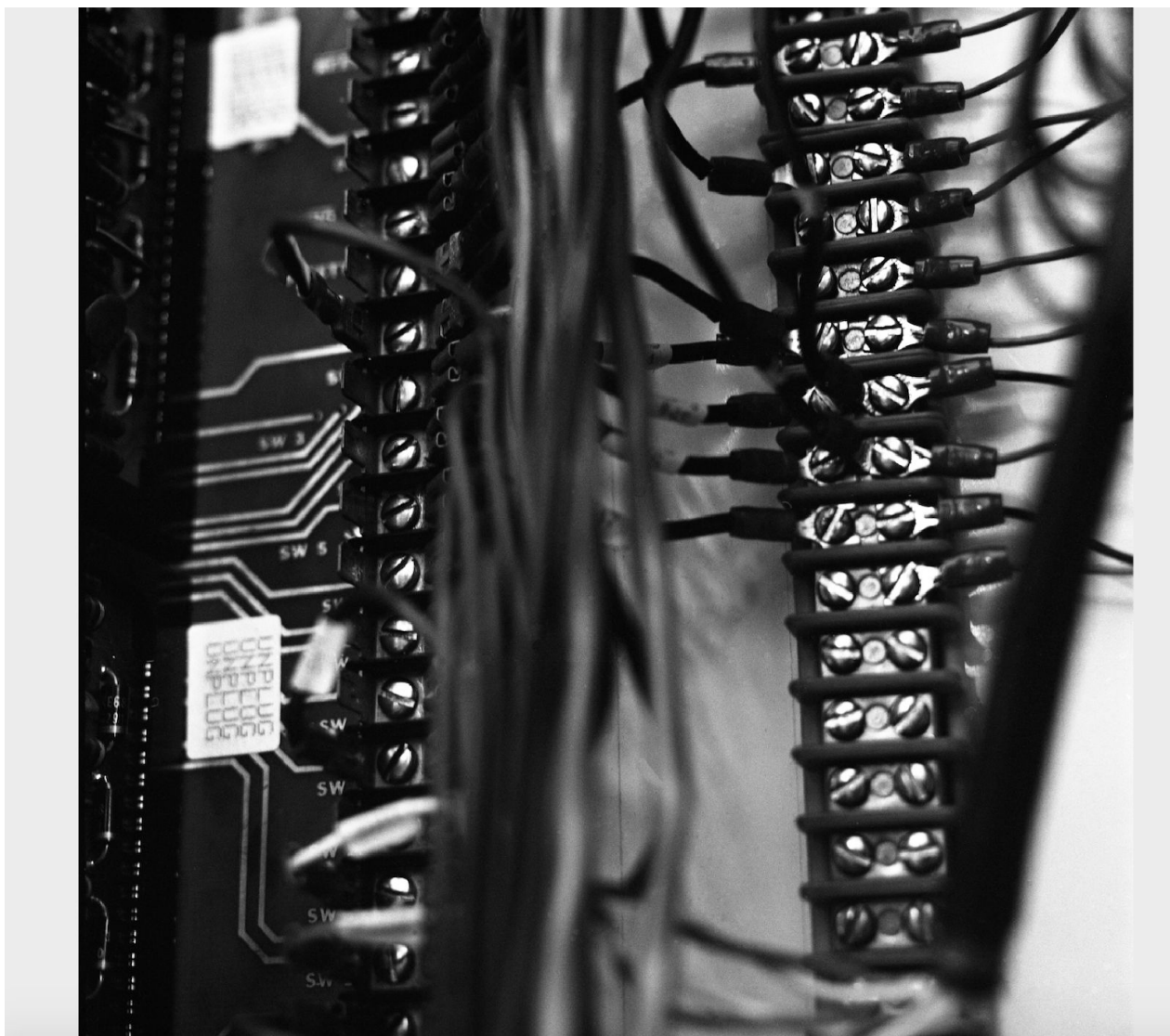


Figure 10: Untitled 3