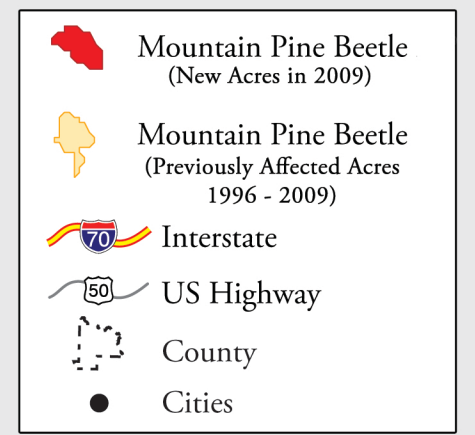
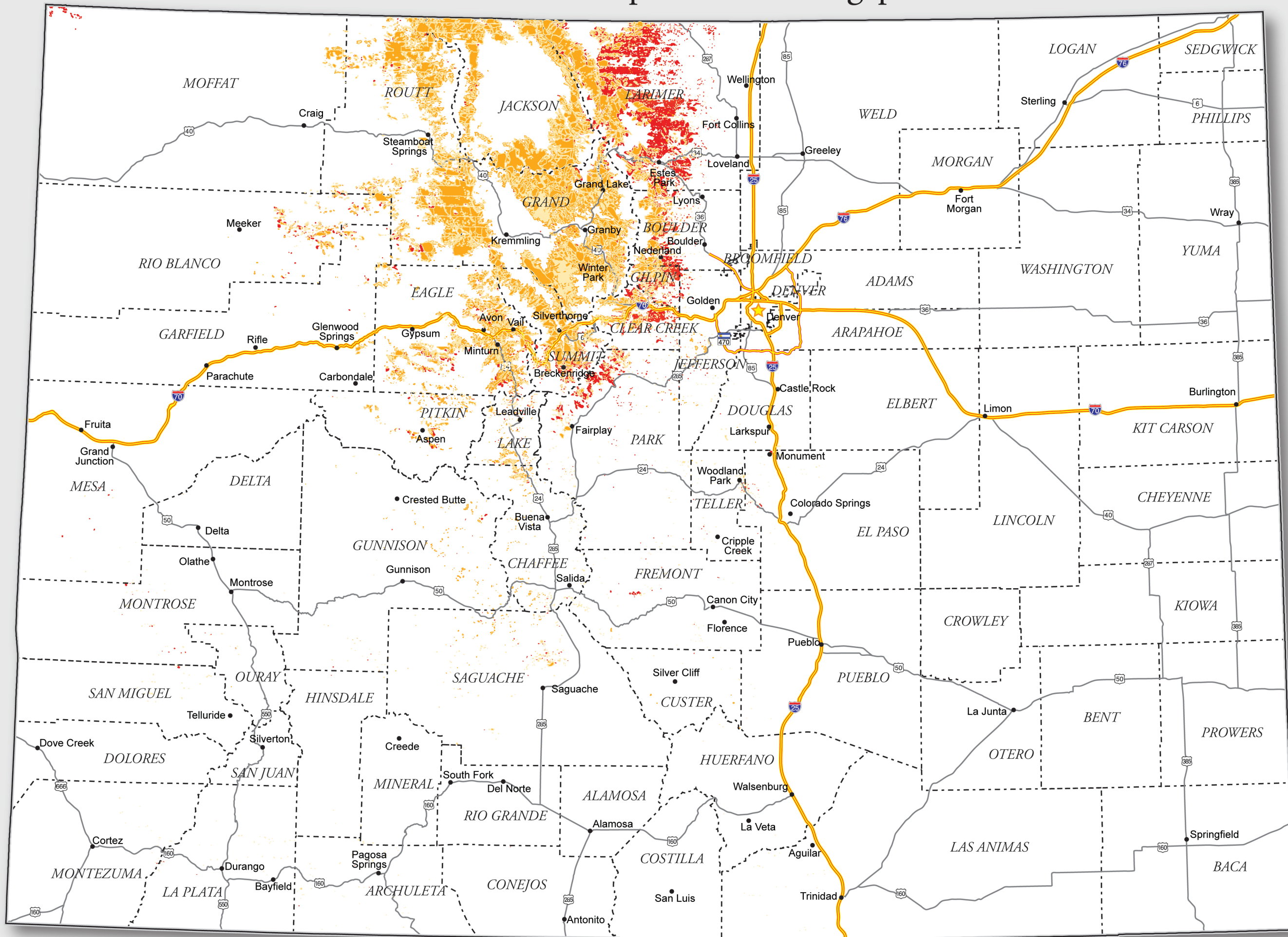


# Colorado's Mountain Pine Beetle Epidemic in Lodgepole Pine 1996 - 2009



## Mountain Pine Beetle

Tree mortality from the current mountain pine beetle infestation is unprecedented in Colorado's recorded history. Since the infestation began in 1996, approximately 1.5 million acres of lodgepole pine have been infested in Colorado.

Beetle epidemics are a natural part of forest ecosystems, but the old age of many of the state's lodgepole pine forests makes them susceptible to large-scale epidemics. Old forests, drought, warm temperatures all have had a role in fueling this epidemic.

At current rates of spread and intensification, it is likely that MPB will kill the majority of Colorado's mature lodgepole pine forests within the next 3-5 years. However, younger lodgepole pines will survive and seedlings will regenerate naturally.

During the first few years following infestation, needles turn red on infested trees and the trees die. Fifteen to 20 years later, the dead trees fall over. Wildfire is a real threat to life and property in beetle-killed areas whether trees are red and dead or years later when they fall over and litter the ground.

## Aerial Survey Data

Due to the nature of aerial surveys, the data on this map will only provide rough estimates of location, intensity and the resulting trend information for agents detectable from the air. Many of the most destructive diseases are not represented on this map because these agents are not detectable from aerial surveys. The data presented on this map should only be used as a partial indicator of insect and disease activity, and should be validated on the ground for actual location and casual agent. Shaded areas show locations where tree mortality or defoliation were apparent from the air. Intensity of damage is variable and not all trees in shaded areas are dead or defoliated.

The insect and disease data represented on this map are available digitally from the USDA Forest Service, Region Two Forest Health Management group. The cooperators reserve the right to correct, update, modify or replace GIS products. Using this map for purposes other than those for which it was intended may yield inaccurate or misleading results.



Map created January 2010  
For more information:  
<http://csfs.colostate.edu/>

