



Brittany Micho

Fall 2020

Capstone - Painting

Department of Art and Art History

Artist Statement:

My works explore the idea of the soul struggling to remain within the human form. The grotesque and abstracted features are used to highlight the moment the soul begins to escape. The soul does not know how to make sense of being human and therefore longs to escape from its stressors. It mimics a boiling point where it explodes into broken and distressed forms. The Soul keeps trying to remain and look human but parts of its ethereal reality slips in with ours, even obscuring the majority of the bodily figure itself. I enjoy the idea of intertwining the narrative of the body versus that of the soul. It allows for an environment where the figures are eternally menaced by some invisible and sombre power. The insecurity of torment and fear pervade the world in which the figures move.

While the body and the soul are intricately entwined, I feel that there is a clear difference between the two. My aim is to engage with how the soul feels within the body when it is confronted with depersonalization, derealization, dissociation, estrangement and defamiliarization. I use oil paints on metal surfaces such as copper and steel while also applying chemical solutions to create rust and patinas on the piece. I use those natural colors and shapes to help form the atmosphere in which these souls live. The use of metal only adds to the pieces, connecting them to natural decay, rust, putrefying states, melting, dissolving and dissociation to express the impermanence of their bodily life. I want the viewer to be immersed in this extreme environment and feel the tension for themselves.

Title	Original Format
Figure 1: Drift in the Wisps, Wander and Wane	Oil and Patina on Copper, 8 in x 12 in
Figure 2: Melting into the Æther	Oil and Rust on Steel, 10 in x 11.5 in
Figure 3: Fire and Brimstone	Oil, Rust, and Patina on Steel, 10 x 11.5 in
Figure 4: The Lost Adonis	Oil and Patina on Copper, 10 x 12 in
Figure 5: She Flows	Oil and Patina on Copper, 8 x 12 in
Figure 6: Untitled	Oil on Canvas, 24 x 30 in
Figure 7: Absent Minded Lingering	Oil and Patina on Copper, 6 x 8 in
Figure 8: Hol mich raus	Oil on Canvas, 24 x 30 in
Figure 9: Alles ist miteinander verbunden	Oil and Rust on Steel, 4 x 6 in
Figure 10: Flüchtig	Oil and Rust on Steel, 4 x 5 in
Figure 11: Alles verfault	Oil on Canvas, 3.5 x 6.5 ft



Figure 1: Drift in the Wisps, Wander and Wane

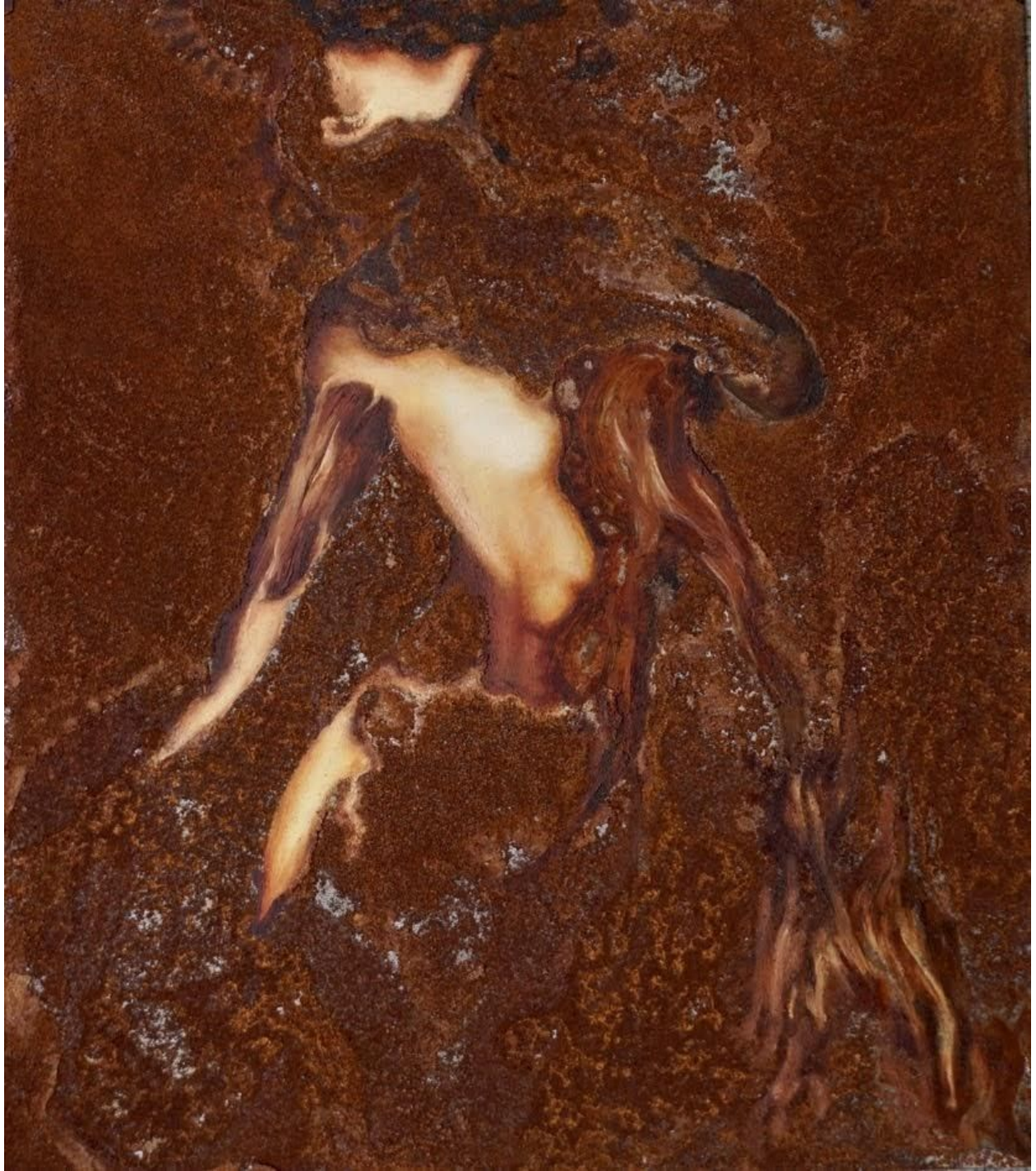


Figure 2: Melting into the Aether



Figure 3: Fire and Brimstone



Figure 4: The Lost Adonis



Figure 5: She Flows



Figure 6: Untitled



Figure 7: Absent Minded Linger



Figure 8: Hol mich raus



Figure 9: Alles ist miteinander verbunden



Figure 10: Flüchtig



Figure 11: Alles verfault