



Artist Statement:

Daniel Johs

Three Pot Stacks.

I love visual art in part because I get to study myself, but also because I get to learn of others culture and history that are different from my own. I am very inspired by Japanese culture with deep human interactions and their self-honesty. I also like American cultures that are not my own like jazz's freedom, metal music's perfection and innovation, and hip hops individuality and community. I love to see differences in aesthetics of cultures worldwide, but also explore my own aesthetics of what is beautiful, funny, aggravating, or sad. This work has a pot taken from the background of a Jackie Chan movie blended with moonshine history. It has abstractions of emotions plus metaphors for my human relations and personal struggles. The field of animation seems to embody my favorite artistic ideas, and that is what I intend to do in the future.

In this work I used coil building techniques for the 3 large base pots and for a few of the smaller pots. I threw feet for a couple and coil built on top, and threw in pieces for others. Glazing was a combination of brush, dip, drip, and spray application. The copper piece was made with forged wire, rivets, an origami balloon covered in super glue, and a tiny sword found in a parking lot.

EMAW Glossy cone 6 glaze:

EPK: 20%

Flint: 20%

Wollastonite: 20%

G200 feldspar: 20%

Frit 3134: 20%

Zircopax: 8%

Mason stain: 8-10%

Anton clear cone 6 glaze:

Nepheline syenite: 22.4%

Frit 3134: 12.1%

EPK: 15.8%

Whiting: 15.7%

Flint: 26.6%

Dolomite: 7.5%

Milky Gloss cone 04 glaze:

Gerstley borate: 38%

Flint: 5%

Kona f-4 feldspar: 7%

Frit 3124: 48%

Satin matte cone 04 glaze:

Barium carbonate: 12%

Gerstley borate: 22%

Custer feldspar: 40%

Whiting: 12%

Zinc: 4%

Flint 10%

| | |
|--|---|
| Figure 1: <i>3 pot stacks</i> | stoneware, glaze |
| Figure 2: <i>pot stack with double gourd bottle and figure</i> | stoneware, cone 6 glaze, wood, copper, paper, super glue, rope, 40"x17"x16" |
| Figure 3: <i>pot on a pot in a pot</i> | stoneware, cone 04 glaze, wood. 40"x17"x16" |
| Figure 4: <i>carved pot stack with 5 on top</i> | stoneware, cone 04 and cone 6 glaze, wood, 32"x22"x20" |
| Figure 5: <i>detail of figure 2</i> | stoneware, glaze |
| Figure 6: <i>detail of figure 2</i> | stoneware, glaze |
| Figure 7: <i>metal man drinking</i> | stoneware, glaze |
| Figure 8: <i>detail of gourd bottle</i> | stoneware, glaze |
| Figure 9: <i>detail of figure 3</i> | stoneware, glaze |
| Figure 10: <i>detail of figure 3</i> | stoneware, glaze |
| Figure 11: <i>detail of figure 4</i> | stoneware, glaze |
| Figure 12: <i>detail of figure 4</i> | stoneware, glaze |
| Figure 13: <i>chimney guy</i> | stoneware, glaze |
| Figure 14: <i>Blue bottle</i> | stoneware, glaze |
| Figure 15: <i>brown pot</i> | stoneware, glaze |

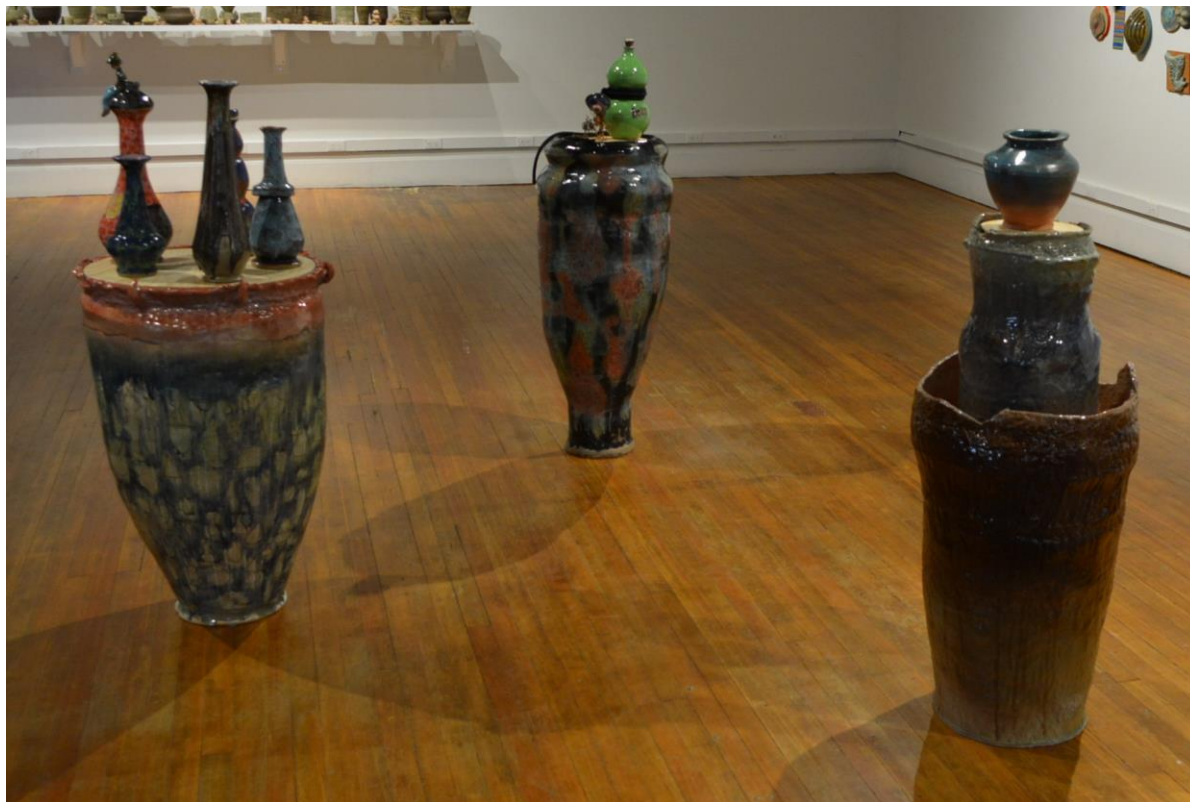


Figure #1: 3 pot stacks



Figure #2: pot stack with double gourd bottle and figure



Figure #3: pot on a pot in a pot



Figure #4: carved pot stack with 5 on top



Figure #5: detail of figure 2



Figure #6: detail of figure 2



Figure #7: metal man drinking



Figure #8: detail of gourd bottle

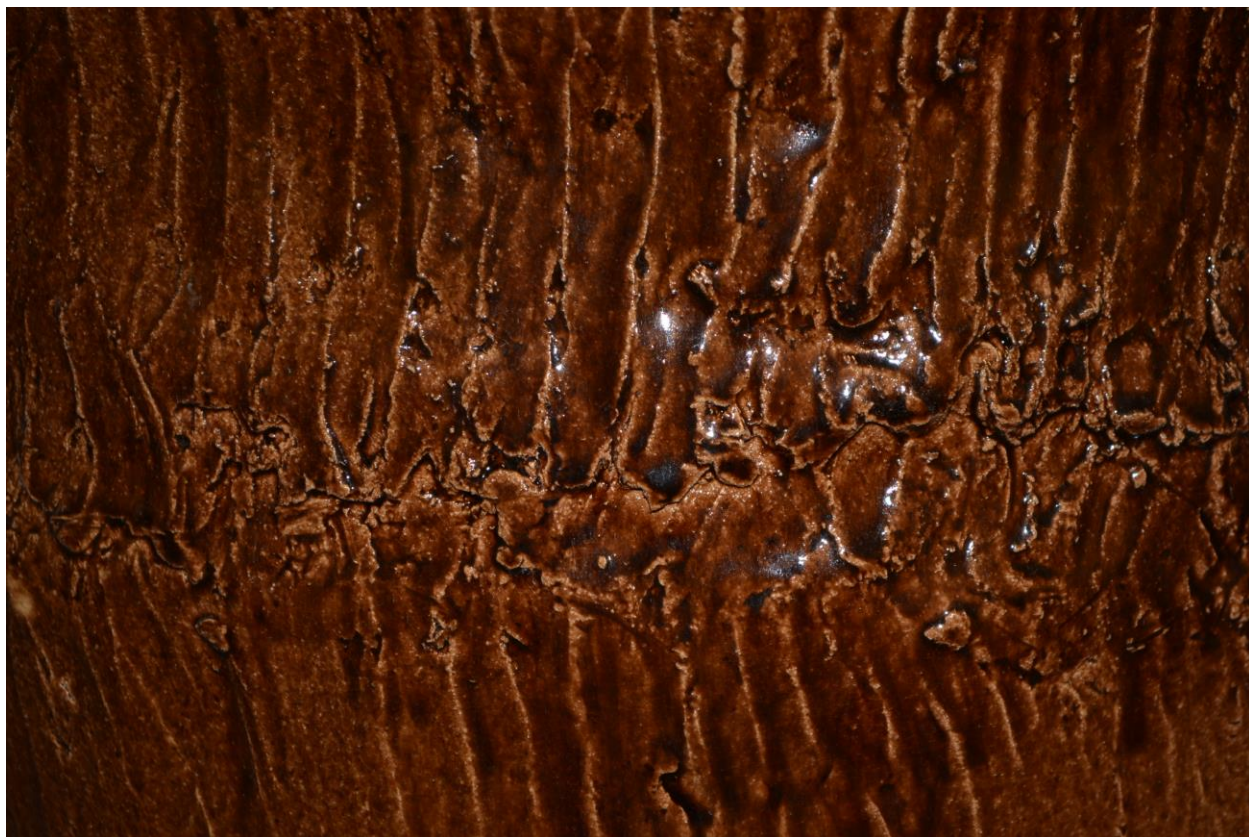


Figure #9: detail of figure 3



Figure #10: detail of figure 3



Figure #11: detail of figure 4

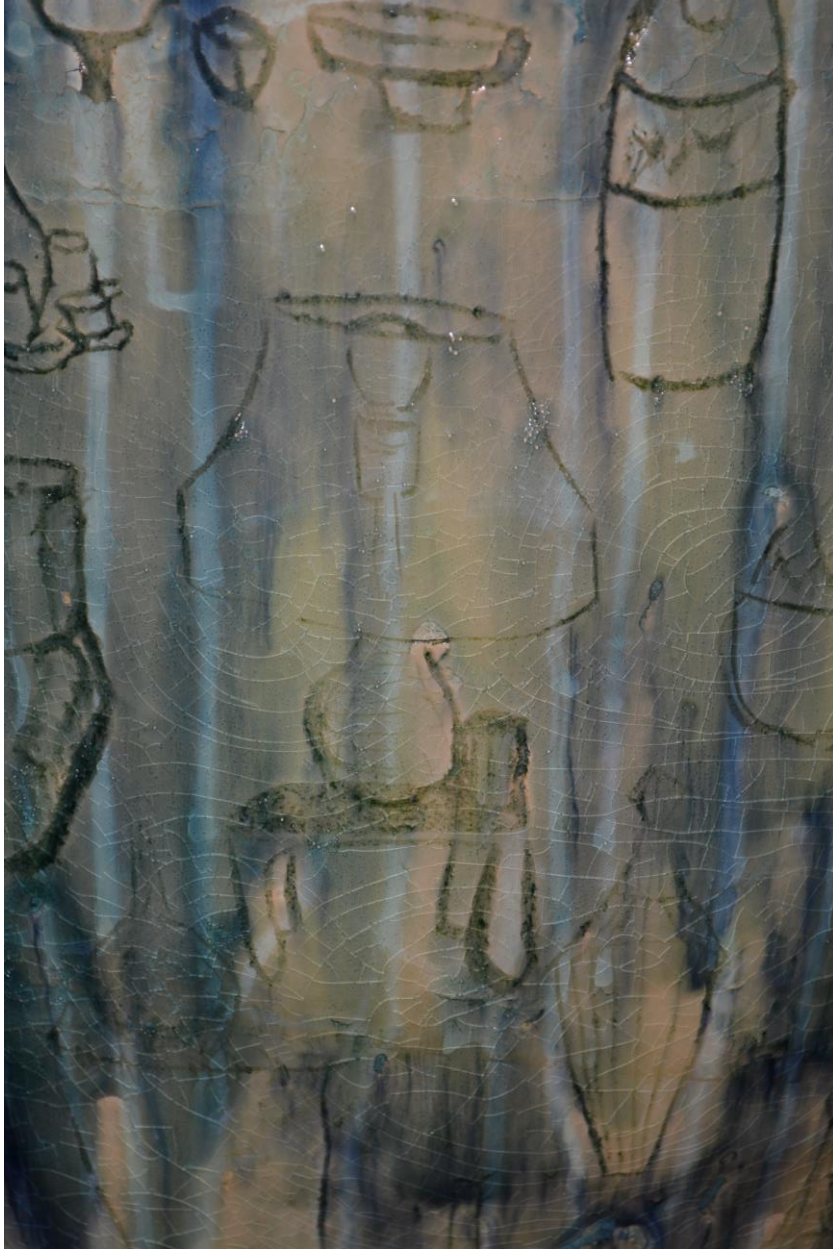


Figure #12: detail of figure 4



Figure #13: chimney guy



Figure #14: Blue bottle



Figure #15: brown pot