



Sienna Bosch

2020 Fall

Capstone - Fibers

Department of Art and Art History

Artist Statement:

My work seeks to understand and give value to the individual as it becomes a part of the whole. In weaving, I'm drawn to the process of using thousands of individual strands of yarn to create a whole. So often, as a part of the human experience, we think about major events that happen in our lives. My intent is to bring importance to each moment in the evolution of life, just as I bring value to the individual strand.

I work to incorporate a sense of time through a variety of forms. Life has a great deal of uncertainty, but it's important to think about the paths we have already created. Through this, I work to create a path or timeline like form, that reflects upon history, time, and evolution.

Each of my weavings is made up of hand-dyed yarn using natural dye methods. I use a variety of processes, however I always seem to come back to rust dye. This process uses rusty objects to develop patterns and color on textiles. Textiles innately have a sense of fragility. Rust dyeing yarn pushes this to a new level. It compromises the integrity of the yarn, allowing for change and deterioration over time. Throughout our lifetime, our past memories begin to fade, however there is still value in those moments of time.

While yarn and fabric are malleable in their natural state, metal has a presence of strength and stability. This metal dictates the movement of the weavings while they maintain their softness. The fabric works to portray this history, while the metal creates structure throughout it.

Title	Original Format
Figure 1: Overview	Cotton, Rusted steel
Figure 2: Evolution II	Cotton, Rusted steel, Individually 3 in x 10 in x 3 in
Figure 3: Evolution II (detail)	Cotton, Rusted steel, Individually 3 in x 10 in x 3 in
Figure 4: Evolution II (detail)	Cotton, Rusted steel, Individually 3 in x 10 in x 3 in
Figure 5: Minute	Cotton, Rusted steel, Individually 10 in x 8 in x 2 in
Figure 6: Minute (detail)	Cotton, Rusted steel, Individually 10 in x 8 in x 2 in
Figure 7: Grid	Cotton, Rusted steel, 20 in x 30 in
Figure 8: Reflection	Cotton, Rusted steel, 36 in x 36 in x 5 in
Figure 9: Reflection (detail)	Cotton, Rusted steel, 36 in x 36 in x 5 in
Figure 10: Reflection (detail)	Cotton, Rusted steel, 36 in x 36 in x 5 in
Figure 11: Intersect	Cotton, Rusted steel, 10 in x 30 in
Figure 12: Intersect (detail)	Cotton, Rusted steel, 10 in x 30 in



Figure 1: Overview



Figure 2: Evolution II



Figure 3: Evolution II (detail)



Figure 4: Evolution II (detail)



Figure 5: Minute



Figure 6: Minute (detail)



Figure 7: Grid



Figure 8: Reflection

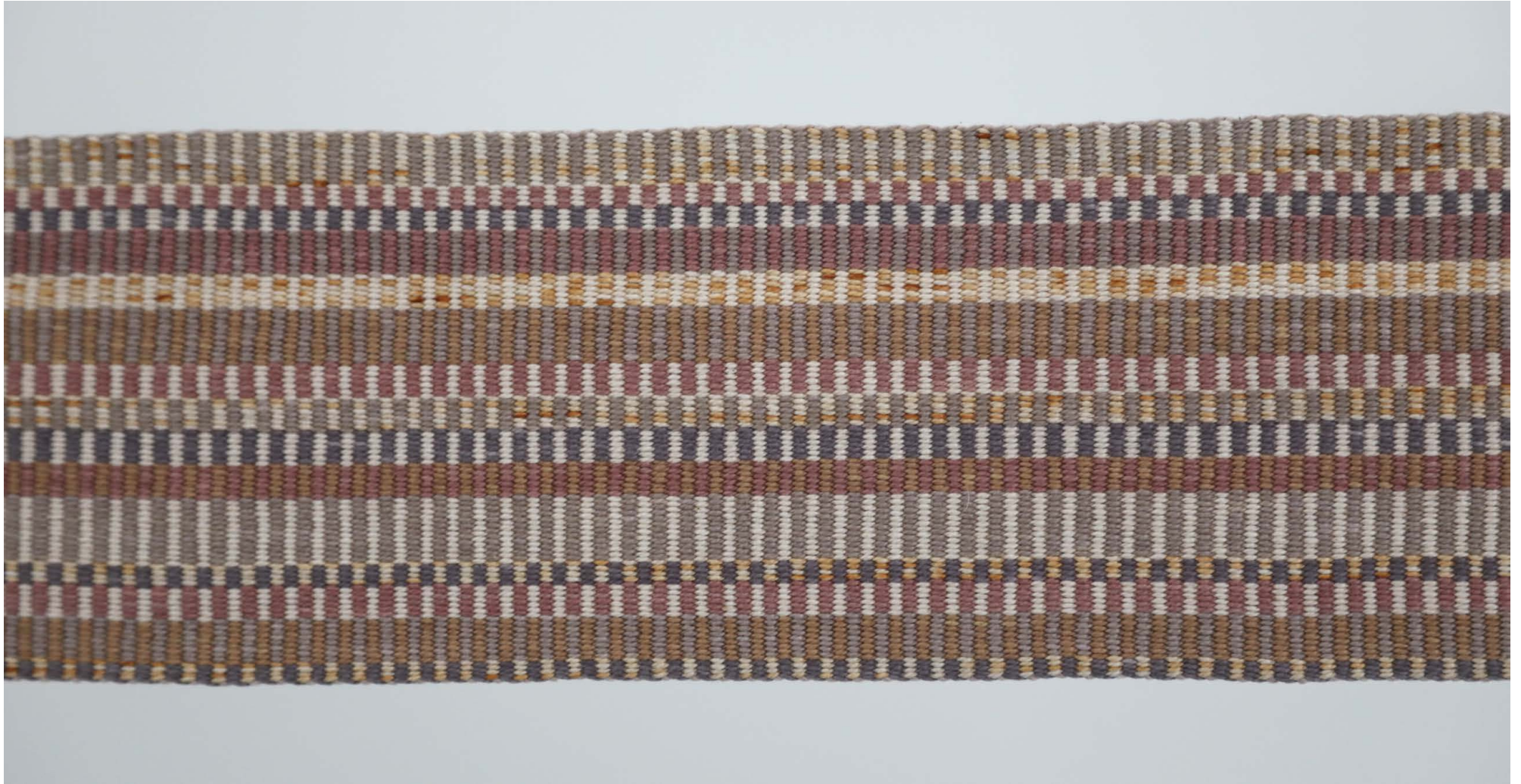


Figure 9: Reflection (detail)

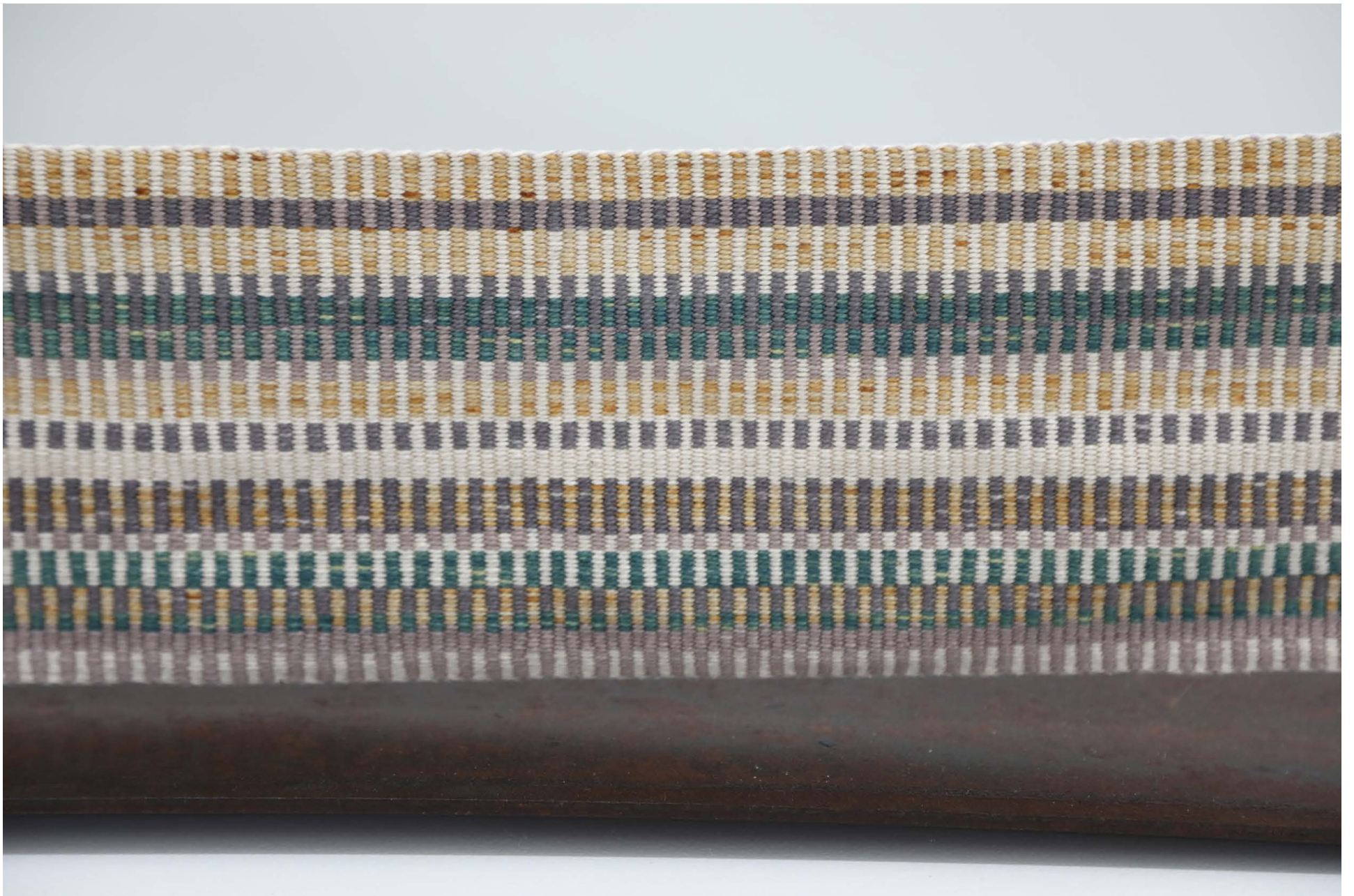


Figure 10: Reflection (detail)



Figure 11: Intersect

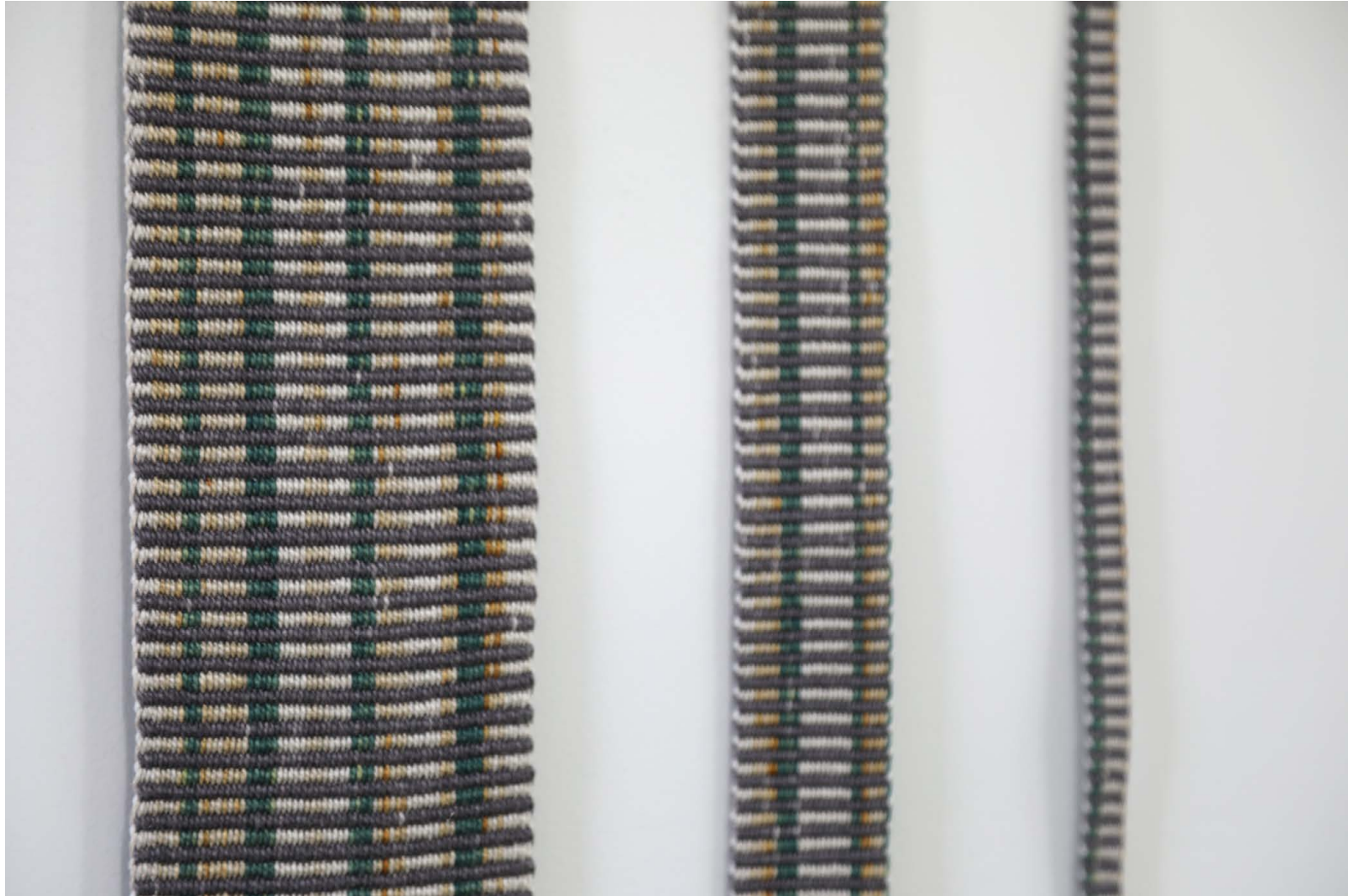


Figure 12: Intersect (detail)