



Artist Statement:

Hyang Jin Cho

I have been interested in visualizing social consciousness in specific forms and structures which associate with historical events and human experiences. My current installation pieces examine female identities from social and personal perspectives. By combining diverse materials, such as paint, clay, fabric and thread, I explore relationships between materials and processes, imagery and metaphor, and reality and imagination.

In the installation, "Not Alone," celebrating women's endeavor to break gender barriers, I installed portraits of contemporary women who made contribution for social justice and equality. By adopting a circular shape of translucent mylar sheets and patterned fabrics instead of the traditional square canvas, I tried to translate their womanhood and achievements into triumphant monuments in a horizontal composition. The crochet frame of each portrait and its connection to ceramic vessels by threads also amplify the gender-loaded labor and endless efforts to overcome their hardships.

Compared to the "Not Alone," "ab intra" is driven by my personal anxiety about aging that influences my identity and produces various emotional reactions. Based on an embryonic shape that has symbolized the origin of life or soul, I developed a form and surface in relation with the female body and organs. As a metaphor of crossing boundary between skin and internal body, I layered and stitched fabrics and painted shapes. Installing paintings in a salon style composition, I also created a personal and intimate space that evokes a sense of domesticity. The ceramic vessels filled by shards of broken structures suggest complicate feelings about changing body and identity.

Title	Original Format
Figure 1: Not alone	Installation, 20 ft x 6 ft x 2 ft
Figure 2: Not alone (paintings)	18 inch diameter each
Figure 3: Not alone (paintings)	18 inch diameter each
Figure 4: Not alone (ceramics)	Size varies (10-14 inch diameter)
Figure 5: ab intra	Installation, 11 ft x 8 x 1 ft
Figure 6: ab intra (paintings)	Size varies
Figure 7: ab intra (ceramics)	Size varies (15-18 inch length)
Figure 8: ab initio	Installation, 3 ft x 7 ft x 4 ft
Figure 9: ab initio (painting)	30 in x 40 in x 1.75 in
Figure 10: ab initio (ceramic)	13 in diameter



Figure 1: Not alone



Figure 2: Not alone (paintings)



Figure 3: Not alone (paintings)



Figure 4: Not alone (ceramics)



Figure 5: ab intra

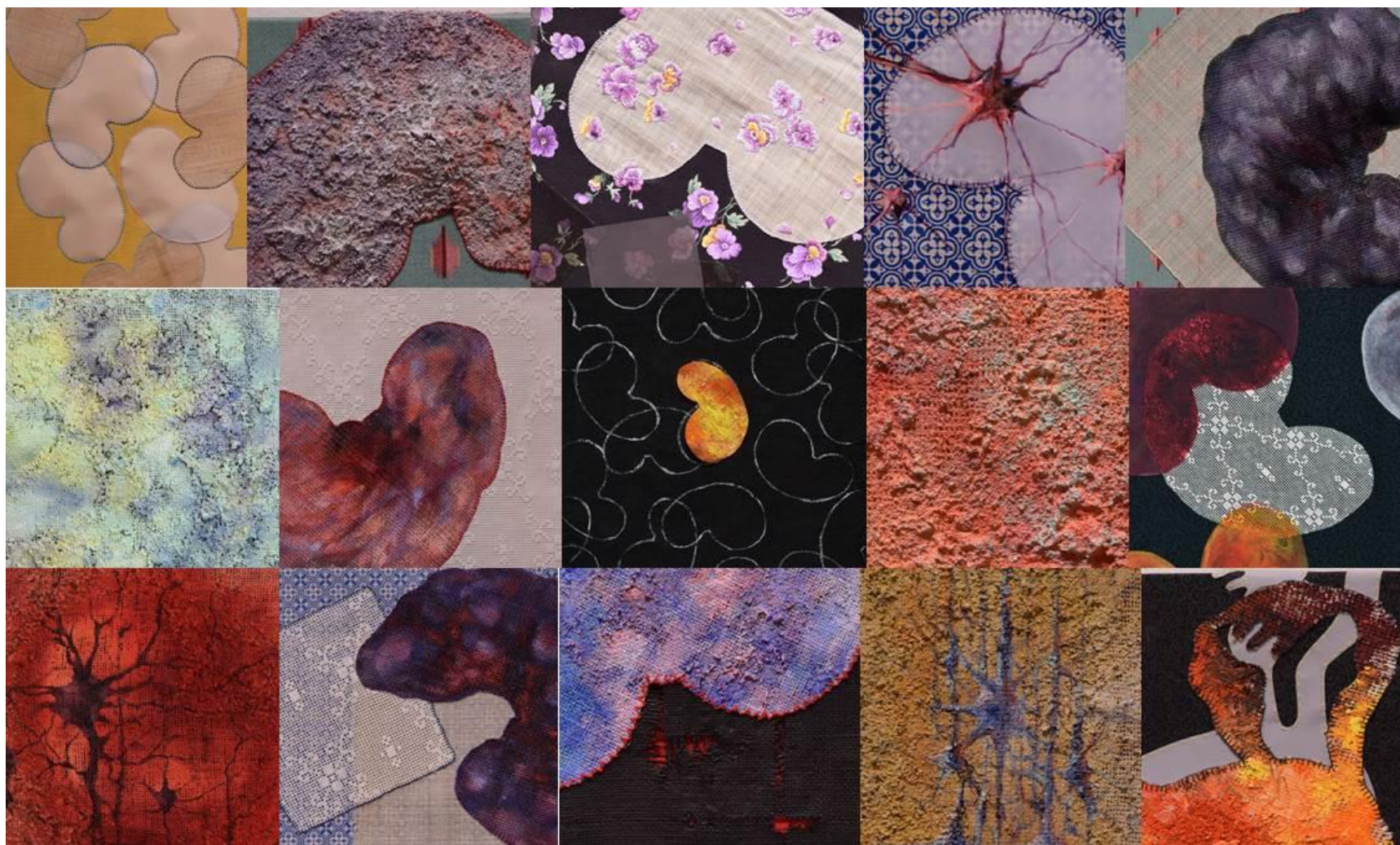


Figure 6: ab intra (painting details)



Figure 7: ab intra (ceramics)

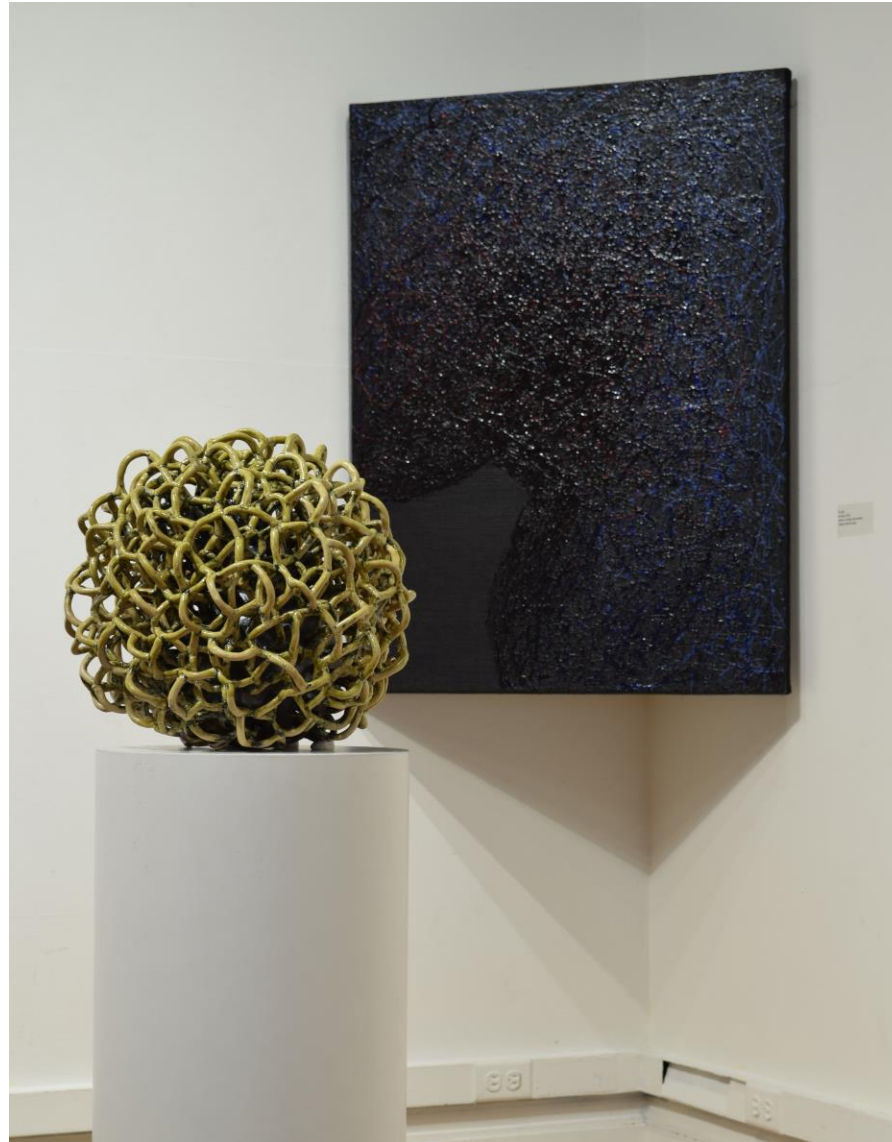


Figure 8: ab initio



Figure 9: ab initio (painting)



Figure 10: ab initio (ceramics)